



FLORIDA INTERNATIONAL UNIVERSITY

BOARD OF TRUSTEES

HEALTH AFFAIRS TASK FORCE

Wednesday, September 10, 2014

10:30 am *approximate start time*

Florida International University

Modesto A. Maidique Campus

Graham Center Ballrooms

Task Force Membership:

Jose J. Armas, *Chair*; Michael M. Adler, *Vice Chair*; Sukrit Agrawal; Cesar L. Alvarez; Jorge L. Arrizurieta; Robert T. Barlick, Jr.; Claudia Puig

AGENDA

1. **Call to Order and Chair's Remarks** Jose J. Armas
2. **Approval of Minutes** Jose J. Armas
3. **Academic Health Center (AHC) Reports**
 - 3.1 AHC Proposed Governance and Foundational Plan John A. Rock
 - 3.2 FIU Health and the Academic Health Center Yolangel Hernandez Suarez
 - 3.3 College Health Model and Student Health Insurance Yolangel Hernandez Suarez
 - 3.4 FIU Health Fee Kenneth G. Furton
4. **Information Items** *(No Action Required)*
 - 4.1 School of Integrated Science and Humanity Update Suzanna M. Rose
 - 4.2 Herbert Wertheim College of Medicine Update John A. Rock
 - 4.3 Nicole Wertheim College of Nursing and Health Sciences Update Ora Strickland
 - 4.4 Robert Stempel College of Public Health and Social Work Update Michele Ciccazzo
 - 4.5 FIU Student Health Services Update Yolangel Hernandez Suarez
 - 4.6 Board of Governors Health Initiatives Committee Workshop John A. Rock
5. **New Business** *(If Any)* Jose J. Armas
6. **Concluding Remarks and Adjournment** Jose J. Armas

This page intentionally left blank

THE FLORIDA INTERNATIONAL UNIVERSITY
BOARD OF TRUSTEES
Health Affairs Task Force

September 10, 2014

Subject: Approval of Minutes of Meeting held June 3, 2014

Proposed Task Force Action:

Approval of Minutes of the Health Affairs Task Force meeting held on Tuesday, June 3, 2014 at the Modesto A. Maidique Campus, MARC International Pavilion.

Background Information:

Task Force members will review and approve the Minutes of the Health Affairs Task Force meeting held on Tuesday, June 3, 2014 at the Modesto A. Maidique Campus, MARC International Pavilion.

Supporting Documentation: Health Affairs Task Force Meeting Minutes: June 3, 2014.

Facilitator/Presenter: Task Force Chair Jose J. Armas

This page intentionally left blank



**FLORIDA INTERNATIONAL UNIVERSITY
BOARD OF TRUSTEES
HEALTH AFFAIRS TASK FORCE
MINUTES
JUNE 3, 2014**

1. Call to Order and Chair's Remarks

The Florida International University Board of Trustees' Health Affairs Task Force meeting was called to order by Task Force Chair Jose J. Armas at 11:30 am on Tuesday, June 3, 2014, at the MARC International Pavilion, Modesto A. Maidique Campus.

The following attendance was recorded:

Present

Jose J. Armas, *Chair*
Michael M. Adler, *Vice Chair*
Sukrit Agrawal
Jorge L. Arrizurieta
Robert T. Barlick, Jr.
Claudia Puig

Excused

Cesar L. Alvarez

Board Chairman Albert Maury, Trustees C. Delano Gray and Alexis Calatayud, and University President Mark B. Rosenberg were also in attendance.

Health Affairs Task Force Chair Jose J. Armas welcomed all Trustees, faculty and staff to the meeting.

2. Approval of Minutes

Task Force Chair Armas asked that the members approve the Minutes of the meeting held on March 27, 2014. A motion was made and passed to approve the Minutes of the Health Affairs Task Force Meeting held on Thursday, March 27, 2014.

3. Academic Health Center (AHC) Reports

3.1 Hodgkins Beckley Consulting LLC/Stephen L. Beckley and Associates Inc. College Health Program Report

Stephen L. Beckley of Hodgkins Beckley Consulting, LLC/Stephen L. Beckley and Associates, Inc (HBC|SLBA) noted that the overarching objective for the consultation was to identify recommendations for the University to implement or explore, with the goal of ensuring access to quality, cost-effective care for current and future students. He then presented an overview of

available strategic options to FIU and discussed the impact of Health Care Reform on college health programs providing background information on the insurance mandate and availability of coverage under insurance exchanges and funding alternatives for college health programs.

Provost and Executive Vice President Douglas Wartzok provided an update on FIU's Student Health Services (SHS) and FIU Health and led the discussion on HBC's College Health Report recommendations. He provided comparative data on student health fees for peer institutions with relationships with academic health centers. He reported that the HBC's College Health Report found that FIU's health fee ranked the lowest amongst all institutions in the State University System.

Provost Wartzok then presented background information on FIU's health fee, noting that the student health fee is not an insurance policy and only covers some clinical and mental health services rendered on campus by FIU Student Health Services and/or the Counseling and Psychological Services Center during the semester for which the student health fee is paid. He presented an overview of the HBC|SBLA findings, indicating that combining medical, counseling, disability and victim's empowerment services is a best practice. He noted that the preeminent consideration is the provision of optimal health services to FIU students and to achieve utilization optimization through service excellence that is up to par with best practice for urban, commuter universities. He also mentioned that in the future, the Task Force should consider options such as: Disability Services and Victim's Empowerment taking greater portions of the health fee and whether FIU should join UF and FSU in implementing a mandatory health insurance.

Task Force Chair Armas inquired as to how State University System (SUS) institutions are approaching the health care needs of the student population in terms of implementation and compliance with The Patient Protection and Affordable Care Act. Provost Wartzok stated that FIU has the lowest health fee among the SUS and added that some peer institutions are moving towards mandatory student health insurance coverage. Chairman Albert Maury requested additional data on FIU's health fee as it compares to other SUS institutions.

Provost Wartzok stated that a significant concern for access to medical services for FIU students is the large number of uninsured and underinsured students. Trustee Armas requested that the University's administration conduct a feasibility study on the available options on conducting a comprehensive outreach process in order to gather information regarding students' insurance statuses and implementing a system in which students who qualify for Medicaid may be assisted with obtaining coverage. For Task Force review, Trustee Armas requested examples of other comparable higher education institutions, regardless of Medicaid expansion in their state that while not mandating health insurance through the higher education institution, may facilitate the acquisition of Medicaid coverage or other insurance by their students.

3.2 Health-related collaborative research in the College of Engineering and Computing

College of Engineering and Computing Dean Amir Mirmiran discussed health-related collaborative efforts by faculty in the School of Computing and Information Sciences and the Departments of Electrical and Computer Engineering and Biomedical Engineering. He noted that bioimaging research is increasingly integrative in nature as it encompasses a range of applications that visualize and analyze information in three and four dimensions, adding that this research has led to findings

that improve conditions for Epilepsy and Alzheimer’s patients. He also presented an overview on work in nanomedicine, noting that this is also an emerging interdisciplinary field with applications that can help in the treatment of diseases with innovative drug delivery systems. He reported that work with a sensor for detection of cortisol is undergoing a feasibility study for commercialization. He also discussed research in the areas of tissue engineering, neuroengineering, and informatics and visualization.

4. Information Items

Task Force Chair Armas requested that The School of Integrated Science and Humanity Update, Herbert Wertheim College of Medicine Update, Nicole Wertheim College of Nursing and Health Sciences Update, and Robert Stempel College of Public Health and Social Work Update be accepted as written. There were no objections.

5. New Business

No new business was raised.

6. Concluding Remarks and Adjournment

Task Force Chair Armas noted that at the Task Force’s next meeting, the following items would be discussed: (i) proposed governance of the Academic Health Sciences Center and the financial sources of funding for all departments in the Academic Health Center and (ii) the College of Medicine’s collaboration with the Colleges and Schools in the Academic Health Sciences and the Miami-Dade Department of Health on initiatives such as FIU Health and the Ambulatory Care Center.

Task Force Chair Armas then noted that the Board of Governors has established an Advisory Group for its Health Initiatives Committee, adding that he has asked Senior Vice President of Medical Affairs and Founding Dean of the Herbert Wertheim College of Medicine John A. Rock to provide reports of the activities of the BOG’s Advisory Group including the meeting minutes to all Task Force members for review. He also noted that Vice President for Research Andres Gil would represent FIU concerning research matters on the BOG Health Initiatives Committee.

With no other business, Task Force Chair Jose J. Armas adjourned the meeting of the Florida International University Board of Trustees Health Affairs Task Force on Tuesday, June 3, 2014 at 12:42 p.m.

<i>Trustee Requests</i>	<i>Follow-up</i>	<i>Completion Date</i>
1. <i>Task Force Chair Armas requested that the University’s administration report on how the Herbert Wertheim College of Medicine is collaborating with the Colleges and Schools in the Academic Health Sciences and the Miami-Dade Department of Health on initiatives such as FIU Health and the Ambulatory Care Center.</i>	<i>Dean and Senior VP John Rock</i>	<i>September 2014</i>

2. <i>Task Force Chair Armas requested that the University's administration report on the financial sources of funding for all departments involved in the Academic Health Center.</i>	<i>Senior VP Kenneth Jessell (E&G and Auxiliary) VP Andres Gil (Research)</i>	<i>September 2014</i>
3. <i>Trustee Armas requested examples of other comparable higher education institutions, regardless of Medicaid expansion in their state, that provide students with assistance in obtaining health insurance.</i>		
4. <i>Chairman Albert Maury requested additional data on FIU's health fee as it compares to other SUS institutions.</i>		
5. <i>Task Force Chair Armas requested that Student Health remain a standing item on the Health Affairs Task Force Agenda.</i>		

C.S.
06.24.14

Report 3.1:
**Academic Health Center Proposed Governance and
Foundational Plan**

This page intentionally left blank

AHC Foundational Plan

*July 2014 -
December 2015*

July 24, 2014

Draft

FIU AHC Foundational Plan

Mission

Leverage existing culture of excellence in all of FIU's health-related colleges and units, which include Herbert Wertheim College of Medicine, Nicole Wertheim College of Nursing and Health Sciences, Robert Stempel College of Public Health and Social Work, College of Engineering and Computing, and College of Arts and Sciences, to support an optimally aligned Academic Health Center that creates value in the new health economy for FIU, its partners, and the community.

Vision

FIU Academic Health Center is a national leader in transforming the health of communities through purposeful integration of cross-disciplinary clinical education, research, and health care.

Values

Scholarship

Innovation

Collaboration

Integrity

Service

Goals

Jul 14, 2014 - Dec 15, 2015

Goal 1

Enact FIU AHC infrastructure:
Governance,
support,
funding

Goal 2

Develop FIU
AHC 5-Year
Strategic Plan

Goal 3

Integrate all FIU
patient care
through FIU
Health

Goal 4

Establish
health-related
Centers of
Excellence
within FIU AHC

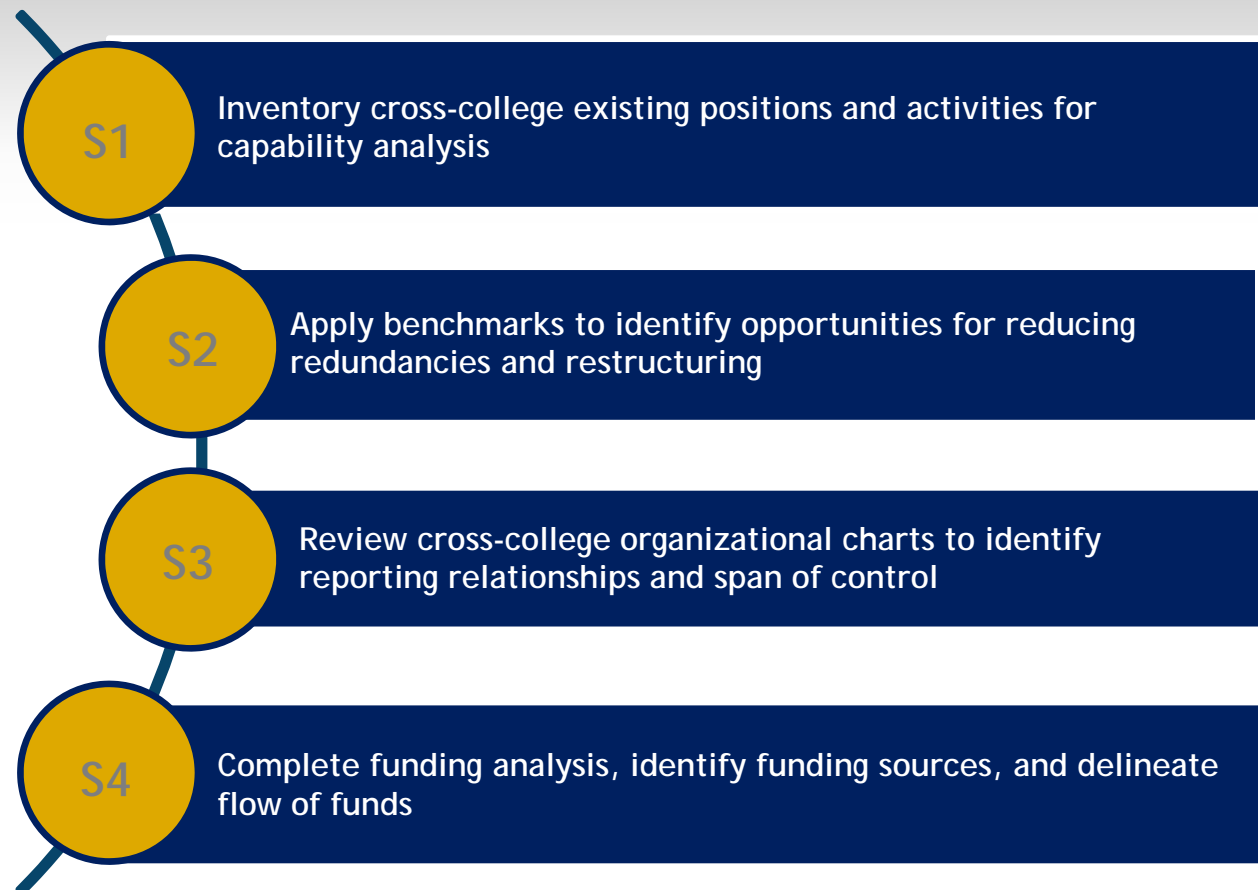
Integrated Health Information Technology (HIT)

FIU AHC Foundational Plan

Goals

Goal 1: Enact FIU AHC Infrastructure

Enact FIU AHC
infrastructure:
Governance,
support, funding



FIU AHC Foundational Plan

Goals

Goal 2: FIU AHC 5-Year Plan

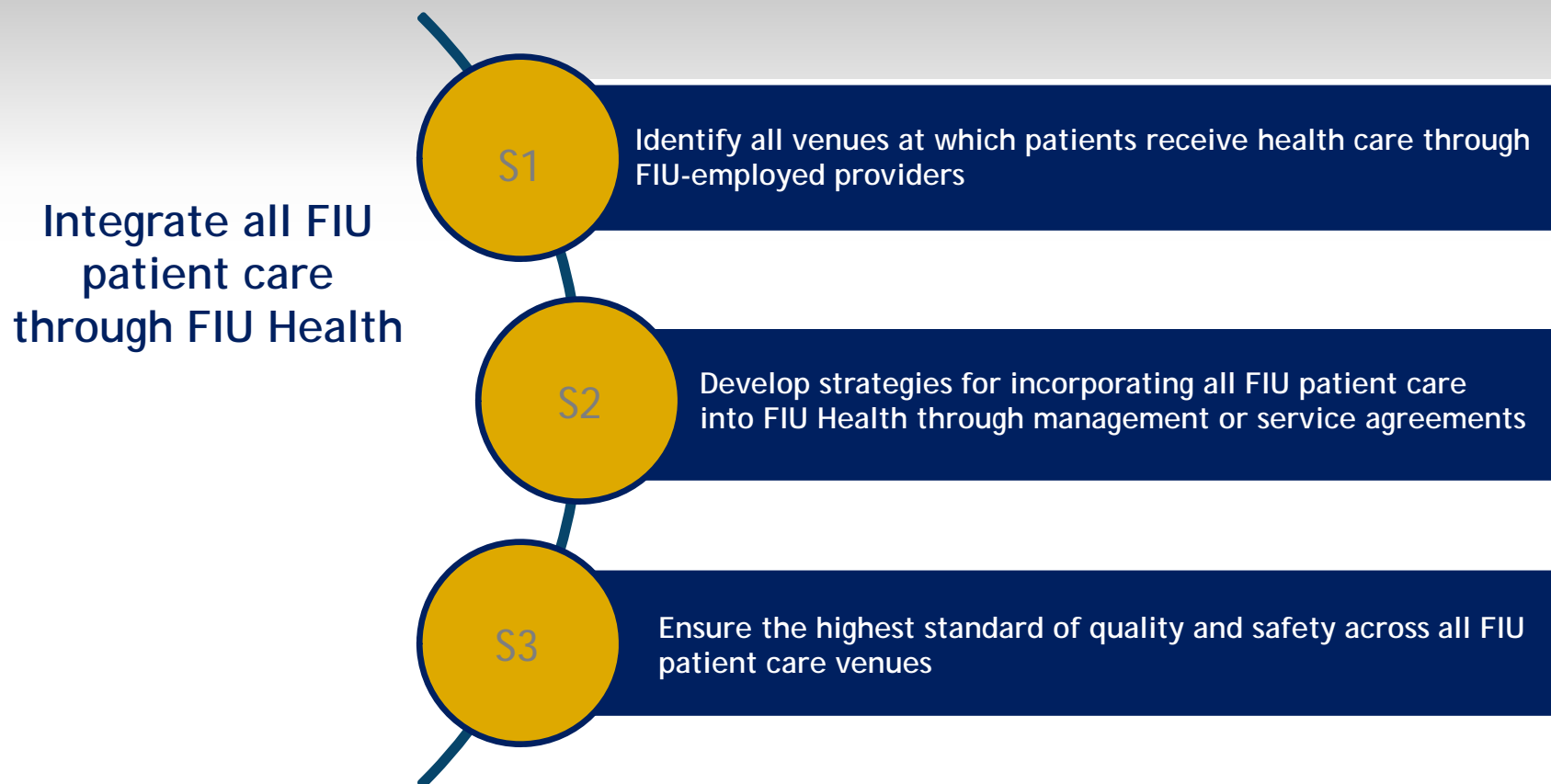
Develop FIU AHC
5-Year Strategic
Plan



FIU AHC Foundational Plan

Goals

Goal 3: Patient Care and FIU Health

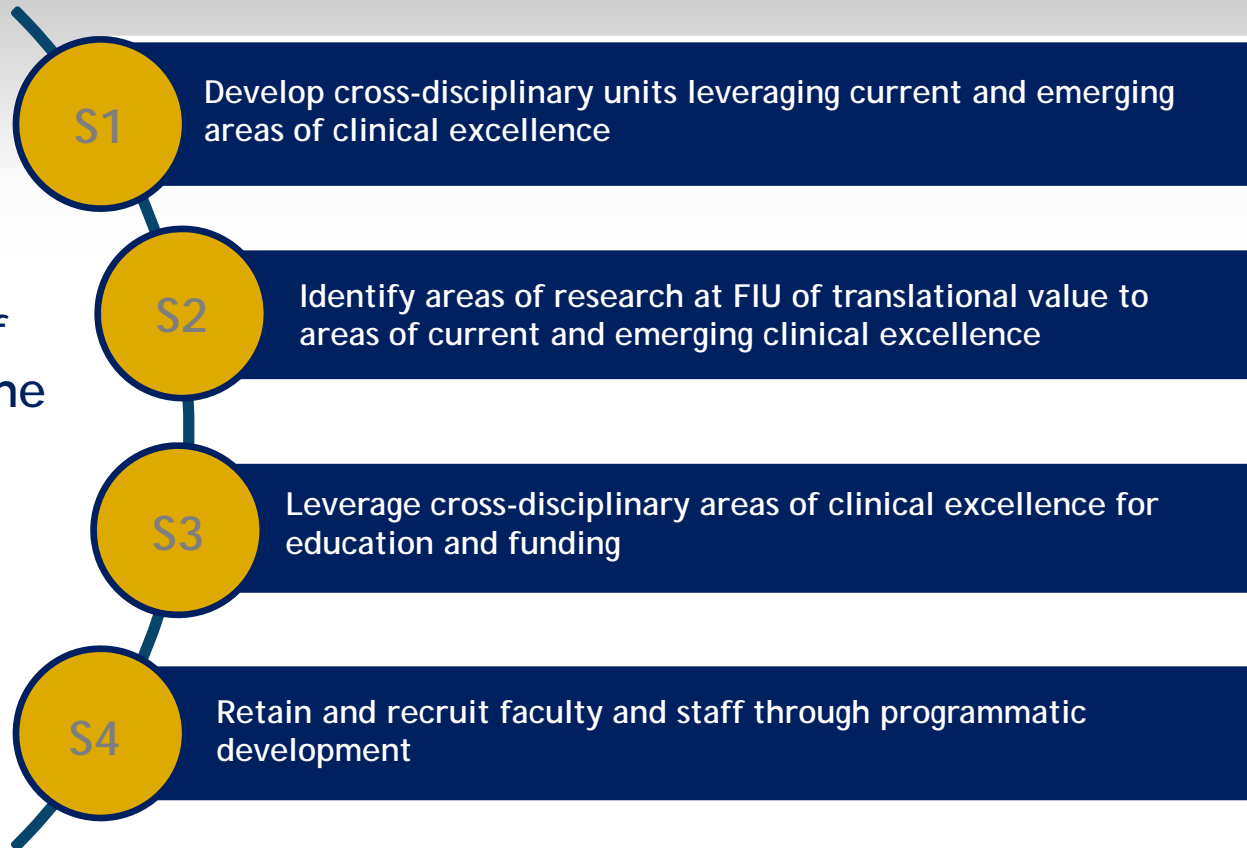


FIU AHC Foundational Plan

Goals

Goal 4: FIU AHC Centers of Excellence

Establish health-related Centers of Excellence within the FIU AHC



FIU AHC Foundational Plan

Timeline and Next Steps



This page intentionally left blank

Report 3.2:
FIU Health and the AHC

This page intentionally left blank

FIU Health and FIU Academic Health Center

FIU Board of Trustees
Health Affairs Task Force
September 2014

FIU Health: AHC Projects

- Miami-Dade Department of Health
Medicaid Managed Care/NeighborhoodHELP™ Collaborative
- EMBRACE: Comprehensive Care for Adults with Autism and other Neurodevelopmental Disorders
- Prescribed Pediatric Extended Care Services (PPEC)
- PCORI Grant Submission with UCF
- May 21, FIU Health Strategic Retreat

MDHD/MMA/NHELP Collaborative

- Interagency collaborative to demonstrate impact of coordinating clinical care, NHELP, and MDHD services across a high risk population
 - Practice site opened
 - Programmatic evaluation determined
 - IT infrastructure/databases being built

EMBRACE

- FIU Health EMBRACE
 - Interdisciplinary clinical program for adults with autism and other neurodevelopmental disorders
 - Health Economic impact
- FIU EMBRACE
 - Extension of services for this population to include vocational, day, and residential services through public/private partnerships

PPEC

- AHCA regulated centers that offers care to medically fragile children during daytime
- Lease agreement
- Learners, Medical Director

PCORI Grant Submission

- Patient Centered Outcomes Research Institute: “ *I-EQUIP FL: Implementation of Evidence-Based Quality Improvement into Practice*”
 - Best practices in cardiovascular disease prevention in the primary care setting
 - Partnered with UCF
 - \$1M opportunity for FIU over 3 years

FIU Health Strategic Retreat

- AHC Leaders included
- Facilitated discussion on leveraging resources
- iREAL Health White Paper reviewed
- Consensus on value of collaborative clinical work:
revenue/learners/research
- FIU Health 2015-2020 Strategic Plan

This page intentionally left blank

Report 3.3:

College Health Model and Student Health Insurance

This page intentionally left blank

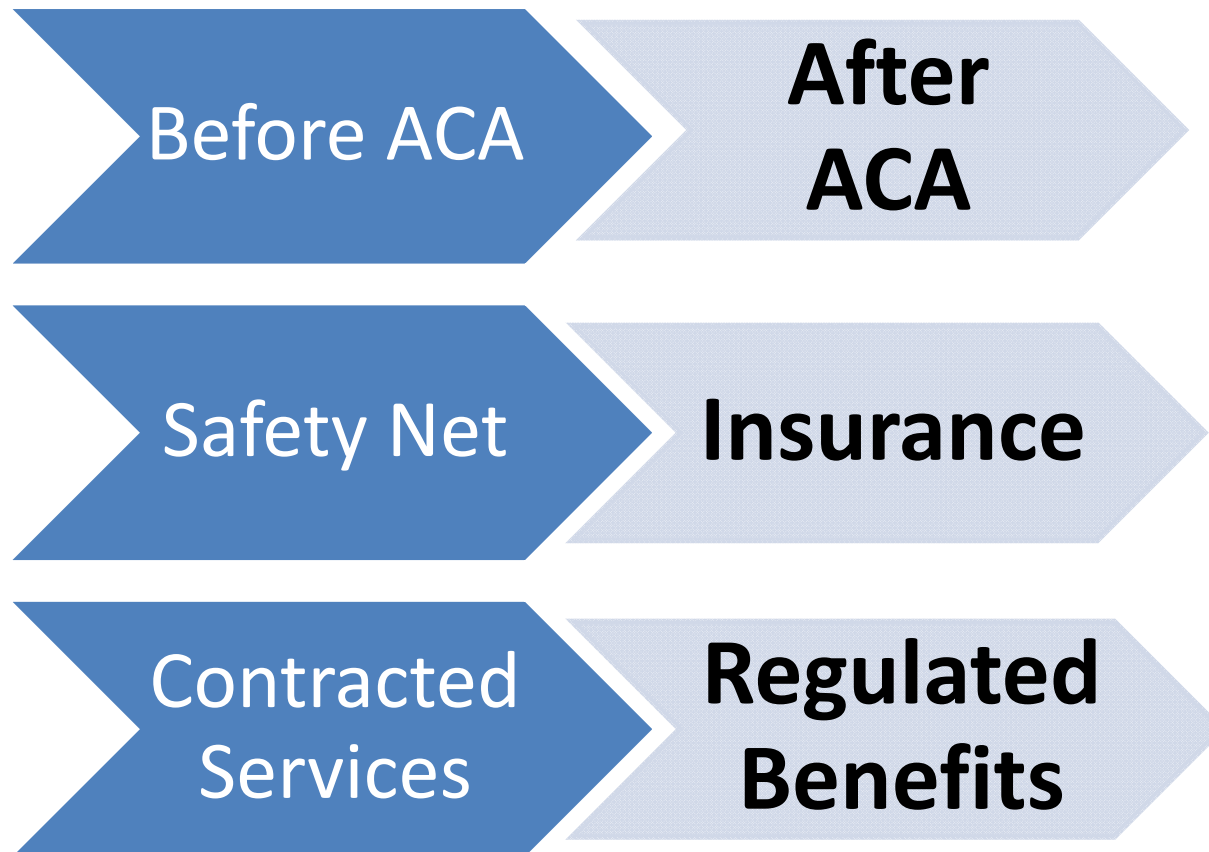
Benchmark Data Student Health Insurance

FIU Board of Trustees
Health Affairs Task Force
September 2014

Healthy Campus 2020

- Support efforts to increase academic success, productivity, student retention, and life-long learning
- Promote quality of life, healthy development, and positive health behaviors
- Create social and physical environments that promote good health
- Achieve health equity, eliminate disparities, and improve the health of the entire campus community

Evolution of Student Health



GAO Health Insurance Report 2008

- 1.7 Million Students
- 80% insured
 - Older, non white, part time workers less likely to be insured
 - 66% through employer-based policies (parents)
 - 11% through University offered policies
 - 57% Universities offered policies
 - 30% Universities mandate insurance
 - New Jersey and Massachusetts mandate student insurance

Care in transition

College Health Model

- Fees
- Capitated
- Negotiated benefits
 - Limited outpatient services
 - Counseling, Wellness, Health Promotion, Academic Assistance, and Victim Advocacy
- Utilization is Student driven

Accredited Health Plan

- Premiums
- Regulated by State and Federal law
- Mandated benefits
 - Include ACA minimum standards
 - Do not include many CHM
- Utilization is Plan driven

University Student Insurance Plans

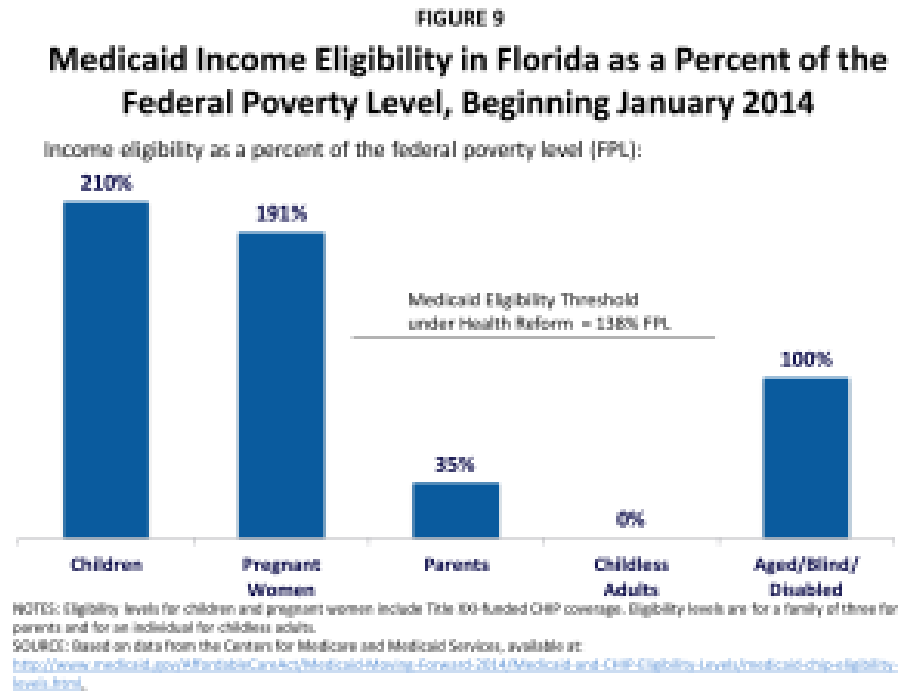
Before ACA

- 82% of 4 year public colleges offered
- Benefits and premiums varied widely
- Some plans extended to dependents
- Some plans offered to part time students

After ACA

- “Student health insurance plans are designated as a type of individual market coverage that are expected to satisfy ‘minimum essential health coverage’ if such plans meet certain ACA requirements.”

Florida Medicaid favors children and pregnant women



Our Students

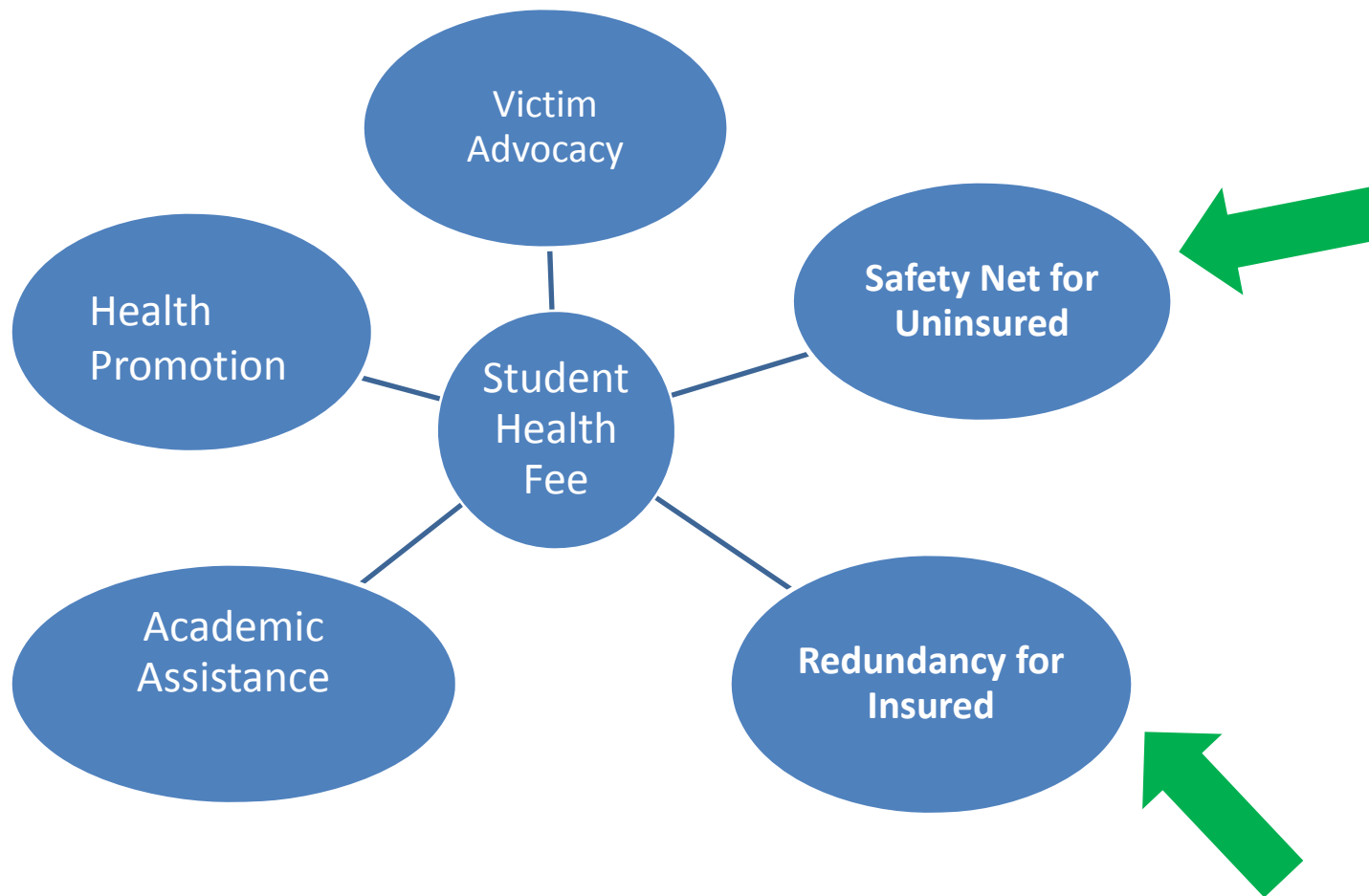
Uninsured

- Optimize services with current Health Fee
- Educate students on benefits of health insurance
- Promote access to State Exchange products and Eligibility programs
- Explore mandatory insurance coverage

Insured

- Retain on campus
- Bill and collect
- Utilize Health Fee for co-pays and co-insurance

Understanding the Student Health Fee



Success in California

- Cal State 15 campuses
- Decreased uninsured students from 30% to 10% by promoting access to State Health Care Exchange and Medicaid Expansion
- No Mandate

SHS/FIU Health Task Force

- Identified budget, personnel, facilities, service lines for clinical operations
- Transition/Implementation Plan
- Student inclusion/survey
- College Health Model (CAPS, VAC, Wellness, and Academic Assistance) to remain under OSA
- Long term planning for sustainability: fees/ insurance/safety net

Additional Resources

- 2008 **GAO Report** to Committee of Health, Education, Labor and Pensions, US Senate: summary of College Student insurance prior to ACA
- **Kaiser Family Foundation:** Florida Medicaid eligibility and coverage
- **Lookout Mountain Group:** non partisan study group that advocate for College Student Health
- **American College Health Association:** standards for Student Health Insurance coverage

FIU-HEALTH ANALYSIS OF:

6 PUBLIC UNIVERSITIES:

- COLLEGE OF MEDICINE CO-LOCATED ON MAIN CAMPUS
- STUDENT HEALTH SERVICES REPORTS TO COLLEGE OF MEDICINE, UNIVERSITY HOSPITAL OR TO OTHER ACADEMIC MEDICAL CENTER DEPARTMENT

(Universities obtained from HBC/SLBA report dated 2/28/14)

Highlighted areas represent duplication with services offered by FIU-Health

	Michigan State University	Texas Tech University	University of Florida	University of Iowa	University of Toledo	University of Washington
Director	Glynda M Moorer, MD	Evelyn McPherson	Guy Nicolette, MD	Jim Kellogg		William Neighbor, Jr., MD
College of Medicine founded	1964	1969	1956	1870	1872	1946
Services	Allergy & Immunizations Counseling & Psychiatry Health Education HIV & STI Testing Laboratory Medical Records Neighborhood Clinics Pharmacy Physical Therapy & Orthopedics Primary Care Radiology Women's Health Work-Related Illness & Injury	Primary Care Sports Medicine Mental Health Laboratory Services X-Ray Services Pharmacy - Offering lower-priced prescriptions Educational Programming Drug and Alcohol Education, Assessment and Referral (RAP)	Primary Care General Medical Care Emergency & Urgent Medical Care Flu (Influenza) Shots Immunizations: Requirements & Form Laboratory Pharmacy Radiology & EKG Sexual Health Self-Help Resources Specialty Care Allergy Injection Clinic Massage Therapy Mole Screenings Nutrition Services Occupational Medicine (Occ Med) Physical Therapy Sports Medicine Travel Counseling/Vaccinations Women's Clinic Workers' Compensation	Allergies Blood and Body Fluid Exposure General Medicine Gynecology Immunizations International Travel Laboratory Nurse Care Room Nurseline Pharmacy Psychiatry Self-Care Guide Sexual Health	Acute illness care Physical examinations Prescription medications Mental health and counseling services Allergy injections Immunizations for required clerkships Occupational exposure follow-up care Well woman care and routine contraceptive care	Primary Care Women's Health Family Health Mental Health Sports Medicine Travel Clinic Physical Therapy Immunization UW Measles Requirement Health Promotion Pharmacy Lab STD Testing Radiology Medical Records Tobacco Talk
Insurance Requirement	International students, medical students and veterinary students only required	Require all enrolled students in any non-immigrant status (not U.S. citizens, not Permanent Residents, not Refugees) to	Effective Summer B 2014, all newly admitted or re-admitted students meeting certain criteria will be required to show	Health science students and Foreign students only required.	Mandatory health insurance policy that indicates that domestic students registered for 6 or more on campus hours	International students are required to enroll in the student insurance plan while attending the University of Washington.

		have insurance	proof of health insurance This change will go into effect for all students enrolling in a degree seeking program for the first time to term Summer B 2014, starting on June 30, 2014. The requirement would also apply to students who complete a degree and move to a new degree seeking program (e.g. from bachelor's to master's). Please note that students who have matriculated at UF Summer A 2014 or earlier and who are currently enrolled are exempt from this requirement.		and International students registered for 1 hour or more must maintain health insurance. Students who are covered by another insurance plan may opt to waive UT's plan	
Student Health Insurance	Voluntary through Aetna	Required through BCBS of Texas	SHIP through United Healthcare		SHIP through Medical Mutual	Eliminating optional SHIP September 2014
Accredited	JCAHO	Texas Tech University Health Sciences Center is accredited by the Southern Association of Colleges and Schools Commission on Colleges	AAAHC	AAAHC	AAAHC	AAAHC
Health Fee	Enrolled students will not be charged for the first 3 medical office visits of each academic year. Additionally there is no charge for the first three lifetime Psychiatry visits. This does not include services such as laboratory tests, prescriptions, X-rays, physical therapy, surgical procedures, and medical supplies.	All students who pay the medical service fee get: <ul style="list-style-type: none"> Discounted visit fees for all students Visit copayments are waived for insured students Discounts fees for provider services by 70% for students without insurance Discounted Laboratory fees Discounted Radiology services fees Limited Psychiatry Services (with referral from a Student Health Services primary care physician) Triage Nurse services Nurse Clinic services 	The \$514/semester fee covers : <ul style="list-style-type: none"> patient financial responsibility associated with most SHCC office visits (for example, when a medical provider evaluates a sick patient but does not order any tests, procedures or prescriptions) telephone or online services initiated by the patient Patients are financially responsible for items not covered by the health fee; these include, but are not limited to: <ul style="list-style-type: none"> health insurance hospital visits external community providers/facilities 	\$118.50/ semester - Students enrolled for more than 4 semester hrs pay fee, supports: <ul style="list-style-type: none"> Unlimited student office visits with a healthcare provider for illness or injury at no cost Subsidizes the costs associated with other services Public health initiatives on campus NurseLine (phone access to a registered nurse for health information and advice) Health education and promotion across campus and visits made to Westlawn and the CRWC for health promotion services such as the 		\$126/quarter covers: <ul style="list-style-type: none"> One visit per quarter for medical concerns (this excludes comprehensive physicals, specialty visits, and procedures) Unlimited visits with Hall Health Consulting Nurses Advice about concerns for HIV & STD exposures Reproductive health counseling for women (Women's Clinic) and men (Primary Care Clinic) Unlimited access to the Wellness Resource Center Blood pressure screening and consultation Smoking cessation assistance Preventive counseling

		(EXCLUDING cost of immunizations, medications or labs) <ul style="list-style-type: none"> • Dietician/Nutritional Counseling services • Alcohol, tobacco and other drug assessment, education and referral program (including AlcoholEdu) 	<ul style="list-style-type: none"> • physicals • procedures • X-rays • lab tests • medical equipment • prescriptions, non-prescription medications • vaccinations • massage • physical therapy 	following consultations: <ul style="list-style-type: none"> ○ Fitness ○ Nutrition ○ Tobacco cessation ○ Stress management ○ Sexual health 		and contraceptive advice <ul style="list-style-type: none"> • Crisis Intervention services • After-hours Consulting Nurse service for urgent medical problems • Brief Alcohol Screening and Intervention for College Students (BASICS), a service for students who want to explore their alcohol use
--	--	--	---	--	--	---

* Information obtained from university health services' websites April 2014

This page intentionally left blank

Report 3.4:
FIU Health Fee

This page intentionally left blank

FLORIDA INTERNATIONAL UNIVERSITY
ANALYSIS OF SYSTEM-WIDE FEES
DIVISION OF COLLEGES AND UNIVERSITIES
Effective Fall 2014
8/19/14

STATE FEES: (average)	Ugrad.	Grad.	Law
In-State Matriculation	\$103.32	\$352.38	\$557.02
Student Financial Aid Fee	\$5.23	\$17.61	\$27.85
Capital Improvement Fee	\$6.45	\$6.45	\$6.45
Out-of-State (Non-Resid.) Tuition	\$568.68	\$946.61	\$1,109.90
Technology Fee (resident)	\$5.23	\$12.94	\$14.79
Non-Resident Financial Aid Fee	\$29.57	\$47.32	\$55.49

* Main Campus		1	2	3	4	5	6	7	8	9	10	11	SUS
LOCAL FEES		UF	FSU*	FAM	USF*	FAU	UWF	UCF	FIU	UNF	FGCU	NCF	AVG
Health Cr Hr Fee		\$14.93	\$13.97	\$6.91	\$11.44	(2) \$9.42	\$7.52	\$10.84	(1)	\$10.25	\$9.24	\$5.61	\$11.13
BLOCK PER TERM FEE:													
Health Fee - Block per Term (head count)									\$93.69				\$93.69

(1) UCF Health Fee charged to main campus and Rosen College courses only. (2) USF-T per credit includes fees for Marshall Center \$1.50/cr hr. Does not include per credit Health Fee for USF-SP of \$4.90 and USF-SM of \$4.03.

Fall 2014 12 Cr. Hrs.	
HEALTH FEE ONLY	
UNIV.	FEE AMT.
UF	\$179.16
FSU*	\$167.64
USF*	\$137.28
UCF	\$130.08
UNF	\$123.00
FAU	\$113.04
SUS AVG	\$117.75
FGCU	\$110.88
FIU	\$93.69
UWF	\$90.24
FAM	\$82.92
NCF	\$67.32

This page intentionally left blank

Information Items:

- School of Integrated Science and Humanity Update
- Herbert Wertheim College of Medicine Update
- Nicole Wertheim College of Nursing and Health Sciences Update
- Robert Stempel College of Public Health and Social Work Update
- FIU Student Health Services Update
- Board of Governors Health Committee Meeting

This page intentionally left blank

Academic Health Center (AHC) 2013-14 Report
School of Integrated Science and Humanity (SISH), College of Arts and Sciences

August 8, 2014 (Update of May 2014 report)

The School of Integrated Science and Humanity (SISH) was established in 2009 by the College of Arts and Sciences to provide a multi-disciplinary home for the study of health-themed sciences such as biochemistry, biophysics, behavioral science, cognitive and neurosciences. The following provides an update to the May, 2014, report on the health-related initiatives of the School.

BIOMOLECULAR SCIENCES INSTITUTE (BSI)

Director: Dr. Yuk Ching Tse-Dinh

The BSI was launched in May 2014 to conduct research in the areas of *biomolecular and biomedical science related to human health*. Since May, additional federal multi-year grants for a total of \$750K have been awarded to BSI core faculty. Joint projects with the Torrey Pines Institute for Molecular Studies (supported by the Florida Drug Discovery Acceleration Program) and the Sanford Burnham Medical Research Institute (supported by the Florida Translational Research Program) were initiated.

Three distinguished scientists have accepted invitations to serve on the BSI Advisory Board that will meet in Nov. 2014: Dr. Samuel H. Wilson, Principal Investigator at NIEHS; Dr. James J. Hickman, Founding Director of the NanoScience Technology Center at UCF; Dr. Philip Stahl, member of the Diabetes Research Center and Professor of Cell Biology & Physiology at Washington Univ. Professor Philip C. Hanawalt from Stanford University was the Distinguished Lecturer at the BSI Launch Event in May. A distinguished lecture will be delivered by Dr. Sean Mirkin, Professor and Department Chair, White Family Chair in Biology from Tufts University in Fall, 2014. Dr. Peter Cooper from NIH will conduct the NIH/NCBI Human Genome Workshop on Human Variation and Disease Genes in November 2014.

COGNITIVE NEUROSCIENCE AND IMAGING CENTER (CNIC)

Director: Dr. Angela Laird

The proposed Cognitive Neuroscience and Imaging Center (CNIC) is a multidisciplinary group of faculty focusing on mental processes in the healthy and diseased human brain across the lifespan. Since May, CNIC faculty received an additional \$600K in new, multi-year commitments from federal agencies.

Educational Programs. The CNIC began an interdisciplinary Graduate Certificate program in Cognitive Neuroscience in spring 2013. Ten students are currently enrolled in this program, with one graduating in spring 2014. A new cognitive neuroscience doctoral track within psychology and three new tenure-track cognitive neuroscience faculty were hired to start the program in Fall 2014. This new group will overlap to some extent with the Center for Children and Families below. One graduate Ph.D. student has been accepted to start the program this fall, with several students from other Psychology programs applying to double major in Cognitive Neuroscience.

CENTER FOR CHILDREN AND FAMILIES (CCF)

Director: Dr. William Pelham

The Center for Children and Families is a multidisciplinary team of researchers and service providers committed to improving the lives of children suffering from mental health problems and their families. The center is the leading provider of evidence-based services for children with ADHD in Miami, already having served more than 2,500 families. The Summer Treatment Program (STP) served 242 South Florida children in the summer of 2014 and another 1086 Families during the academic 2013-2014 year, 776 of whom were enrolled in clinical research projects. For AY 2013-14, the CCF produced over 100 peer-reviewed articles. Grant expenditures exceeded \$9.75M, mostly federal grants with full indirect costs.

This page intentionally left blank

THE USCMLE STEP 1 SCORES

The USMLE Step 1 is the first part of the United States Medical Licensing Examination required for medical licensure in the U.S. The HWCOT Class of 2015 has a current 100% pass rate of this exam, the average national pass rate is 96%*. The pass score for the Step 1 is 192, the national mean (last released in 2013) is 228; our students' average score is 236.6. This places our students' performance at more than 8 points above the national mean, with 70% of our students scoring at or above the national mean. In addition, 27% of our students have scores equivalent to or greater than 1 standard deviation above the mean and one student has achieved a score equivalent to 2 standard deviations above the mean placing him in the top 2.5% of test takers nationally.

*77 of the 78 students in the Class of 2015 have passed the exam. The remaining student has taken the exam, but the score has yet to be released.

WHITE COAT CEREMONY

On August 8, 2014, the HWCOT officially welcomed the Class of 2018. The 120 matriculants were selected from a pool of more than 4,000 applicants. This is the HWCOT's sixth class, and the first to comprise more female than male students (61 women, 59 men). This class also includes more FIU grads, 21, than any other prior class. Eighty-two percent of the students are Florida residents, but represent 20 different countries outside of the U.S.

3D MOBILE MAMMOGRAPHY CENTER

Studies have found that 3-D mammography detects more breast cancers with fewer "false alarms" than standard or digital mammograms alone. It is expected to outperform standard digital mammography in detecting small invasive breast cancers and lobular cancers, which can be the most lethal. The HWCOT recently purchased a 3-D Mobile Mammography Center that will make this state-of-the-art cancer screening available to South Florida's most needy and most vulnerable communities as part of our Green Family NeighborhoodHELP™ initiative. Some of the communities we serve through NHELP™ have the highest rates in the nation of breast cancer detected in late stages: 46-59%. The national average is 39%, the average for the rest of Florida is 35%. In addition to free 3-D mammograms, women will have access to examinations, diagnosis and treatment. By increasing access to breast cancer screening to our NHELP™ members we anticipate that we will see a reduction in the incidence of advanced breast cancer, and thus mortality.

FIU EMBRACE (Embracing Comprehensive Health Care for Adults with Autism Spectrum Disorder and other Neurodevelopmental Disorders)

The FIU Herbert Wertheim College of Medicine has created a comprehensive, integrated care model, FIU EMBRACE, to provide medical and behavioral health care to adults with autism spectrum disorder and other neurodevelopmental disorders. Our services and treatment involve interdisciplinary collaboration and integration of lifelong care among various providers. Services are provided one Saturday a month at the FIU Health-Modesto A. Maidique location and include: primary care, gynecology, psychiatry, laboratory and other ancillary tests. A key feature of EMBRACE is that during office visits, all patient care and laboratory services are provided in the same examination room, minimizing the number of changes and transitions to ensure a more positive patient experience and improved health outcomes.

RESEARCH

Despite the ongoing challenges of shrinking federal funding and greater competition for NIH and other grants, the HWCOT expects a nearly \$2 million increase in research funding for 2014-15. This is a dramatic funding growth over the past three years, and a result of strategic initiatives, investment, and collaboration within the College of Medicine and with other colleges at FIU (e.g. Engineering).

This page intentionally left blank

NICOLE WERTHEIM COLLEGE OF NURSING AND HEALTH SCIENCES Report to the FIU Board of Trustees Health Affairs Task Force

Nicole Wertheim College of Nursing and Health Sciences is Selected for the Veterans Administration Nursing Academic Partnership Program

The Nicole Wertheim College of Nursing and Health Sciences (NWCNHS) and the Miami Veterans Administration Healthcare System are to become VA nurse academic partners. The Miami-based partners were awarded \$8.2 million in support from the Department of Veterans Affairs. Only three VA nurse academic partners were selected from across the nation. The Department of Veterans Affairs Nursing Academic Partnerships (VANAP) program is designed to foster the development of closer relationships between VA facilities and schools of nursing (SON) with baccalaureate degree programs. This program provides the financial and consultative resources to enable substantive change in VA/nursing school relationships and promote innovation in nursing education and practice. It is a requirement that sites develop and implement a post-baccalaureate nurse residency (PBNR) program for accreditation. The VANAP will leverage academic and clinical resources to increase student enrollment, enhance VANAP faculty competencies and professional scholarship, develop the school's academic curriculum to include Veteran specific health problems, expand its emphasis on interprofessional education, develop Veteran-centric practice and education initiatives and increase the recruitment and retention of VA nurses. The majority of clinical training in this program will occur within the VA healthcare system. Other universities awarded VANAP grants in addition to FIU included the University of San Francisco, and Texas Women's University.

Nicole Wertheim College of Nursing and Health Sciences Receives Second \$1 Million Veterans Grant

The NWCNHS was recently notified that their proposal to offer an accelerated BSN program for military veterans was funded for \$1,050,000 over three years. The Veterans BSN (VBSN) program is aimed at improvement of health outcomes, i.e., obesity, selected chronic illnesses, and HIV/AIDS, of the increasingly diverse South Florida population through relieving the shortage of RNs in the South Florida region. The program is designed to reduce health disparities through improvement of healthcare access and improvement of quality of nursing care by providing a program that prepares diverse bachelor's prepared veteran RNs. These veteran RNs will provide culturally/linguistically competent care in culturally diverse healthcare facilities and communities. The VBSN program was planned by the FIU nursing faculty with input from current students, recent alumni, Reserve Officers' Training Corps (ROTC), and community and faculty military veterans including some who have served as both medics and nurses. The curriculum emphasizes global nursing, emerging health systems, genomics, ethics, evidence-based nursing practice, and use of technology in clinical practice. Increasing student experiences in interprofessional collaboration, team and clinical experiences in community settings with underserved populations are also emphasized. The curriculum presents a reasonable balance between didactic, clinical, and simulation teaching strategies.

Nicole Wertheim College of Nursing and Health Sciences Establishes Dual Enrollment Program for Nurses to Obtain MSN and DNP Concurrently

Nursing graduate students will be able to receive MSN and DNP degrees concurrently during this academic year. This new program option will allow graduate nursing students to become nurse practitioners while also studying to receive their doctorate of nursing practice degrees. Students will be able to complete both degrees in three years, and will be able to specialize to become adult gerontology, child, family or psychiatric/mental health nurse practitioners. The first group of students to pursue this option will include 15 students who will enroll fall 2014. Nurse anesthesia students will begin this option in January 2015. The College plans to move all nursing graduate students to this plan in academic year 2015-16. Students who not desire to complete the DNP can receive a MSN when all master's degree requirements are completed. This new graduate option is consistent with the profession's recommendation to have all nurse practitioners prepared at the doctoral level by 2020.

Dr. JoAnne Youngblut Receives Herbert and Nicole Wertheim Endowed Chair in Prevention and Family Health

Dr. JoAnne Youngblut is the first professor in NWCNHS to be named to an endowed professorship – the Herbert and Nicole Wertheim Endowed Chair in Prevention and Family Health. Dr. Youngblut is an internationally distinguished researcher whose leadership in nursing spans 25 years. Her research on how child critical illness and death affect the health of family members and family functioning has been funded with more than \$8 million by the National Institutes of Health (NIH). She was a co-investigator on other research grants for over \$6 million and headed training grants to improve family and child health for \$1 million. In 2013, findings from her NIH-funded study, “Death in the PICU/NICU: Parent & Family Functioning,” were published in the prestigious journal, *Pediatrics*. She has more than 80 peer-reviewed articles in prestigious research journals.

Dr. Youngblut has served on three major NIH research grant review panels and was a grant reviewer for the Canadian Institutes of Health Research and several major foundations. She assisted university faculties in South Korea, China, Thailand, Italy, Egypt, and Zimbabwe with their research. Her awards include the Distinguished Research Award from Southern Nursing Research Society, Werley New Investigator Award from the Midwest Nursing Research Society, Excellence in Research Awards from the Florida and Ohio Nurses Associations and FIU, and a University Distinguished Alumna award from Indiana University of Pennsylvania.

**Academic Health Center (AHC) 2013-14 Report
Robert Stempel College of Public Health and Social Work**

August 8, 2014

The Robert Stempel College of Public Health and Social Work has several active cross-disciplinary research groups focusing on public health and social welfare. The following narrative expands on the report provided to the Board of Trustees' Health Affairs Task Force at the May, 2014 meeting.

Integrated Biostatistics Center

O. Dale Williams, Director

The Integrated Biostatistics Center (IBC) was developed in 2012 with the arrival of O. Dale Williams as the chair of the Department of Biostatistics. IBC provides support to investigators preparing proposals, study designs, data collection and management plans, statistical analyses, and manuscripts. To date, the IBC has worked with 94 FIU faculty and 67 programs in 20 departments from 10 FIU colleges and schools. The IBC has also participates in research with Baptist Health South Florida, Camillus House, Miami Children's Hospital, Monroe County Health Department, and other community-based organizations in South Florida.

Center for Research on U.S. Latino HIV/AIDS and Drug Abuse

Mario De La Rosa, Director

The primary mission of the Center for Research on U.S. Latino HIV/AIDS and Drug Abuse (CRUSADA) is to advance collective knowledge and understanding of the social and behavioral factors influencing the spread of HIV and substance abuse in Latino populations. CRUSADA doctoral and postdoctoral research training and mentoring programs include faculty and students from the RSCPHSW, the College of Education, and the HWCoM. The Center also has ongoing collaborations with faculty from the University of Miami Miller Schools of Medicine and Nursing & Health Studies, and the Morehouse School of Medicine.

Community-Based Intervention Research Group

Eric Wagner, Director

The Community-Based Intervention Research Group (C-BIRG), is a comprehensive, multidisciplinary research group devoted to the design, implementation, and evaluation of community-based interventions for problems facing multicultural urban populations. C-BIRG collaborates with SISH, HWCoM, and Department of Psychology faculty. C-BIRG's community partners include the Miami Children's Hospital, Miami-Dade Public Defender's Office, Miami-Dade Public Schools, Miami Music Project, Broward County Public Schools, and the Choctaw Nation and the United Keetoowah Band of the Cherokee Indians.

FIU-Health Economics and Strategic Solutions

Benjamin Amick, Lead

The mission of FIU-Health Economics & Strategic Solutions (FIU-HESS) is to assist government, business, and community-based organizations to reach critical health policy and economic strategy goals. Faculty associated with FIU-HESS conduct health services research, provide data resources for government and business, develop program and strategic designs, and provide applied training for post-

doctoral and graduate students. Faculty in FIU-HESS are from the Academic Health Center's five colleges and the College of Business. FIU-HESS is also involving leaders in the South Florida business community.

Cardiovascular Research Group

Wasim Maziak, Lead

One of the most exciting collaborative developments in RSCPHSW is the Cardiovascular Research Group (CVRG). The CVRG has participating faculty from the Department of Epidemiology and Baptist Health South Florida. This collaboration has resulted in more than 40 peer reviewed publications in top-tier journals. The work of those in the CVRG is laying the ground work for the Miami Health Study that will provide new insights into risk factors for cardiovascular disease in South Florida's diverse population.

Virtual Group for Community Health

Pedro Greer and O. Dale Williams, Leads

The Virtual Group for Community Health (VGCH) is a cooperative effort between faculty in the RSCPHSW, the HWCofM, and the College of Law. The VGCH promotes community health through innovative research, training, and service. It provides a setting for communication and collaboration across the AHC colleges and programs, and brings interdisciplinary expertise and resources together to address the health and healthcare needs in South Florida. The goal of the VGCH in the coming year is to build its data collection and management capacity.

FIU Health | Student Health Services

Update

September 2014

OSA, FIU, and FIU Health leaders are meeting regularly to develop a transition plan for SHS clinical services from OSA to FIU Health as mandated by the Health Affairs Task Force.

To date, leadership has worked together to understand the current funding model and the regulatory requirements around the Student Health Fee including Florida Statutes, BOG, SAACS, and other accreditation standards.

Currently facilities, personnel, business functions, and clinical services are being inventoried. Victim Advocacy, Behavioral Health, Wellness, and Student Learning will remain under OSA.

Dr. Hernandez Suarez met with Trustee Alexis Calatayud who will help communicate with the student body as this plan rolls out.

The transition plan will be presented to the Health Affairs Task Force in January with a target of implementation by July 1, 2015 to coincide with the new fiscal year.

This page intentionally left blank



STATE
UNIVERSITY
SYSTEM
of FLORIDA
Board of Governors

AGENDA

Health Initiatives Committee Workshop
Dining Room, 2nd Floor, CAMLS
University of South Florida
Tampa, Florida
July 21, 2014

12:00 p.m. – 4:00 p.m. (or upon adjournment)

Conference Dial-In Number, 888-670-3525
Participant Passcode, 4122150353 then #

Chair: Ed Morton; Vice Chair: Elizabeth Webster
Members: Beard, Carter, Chopra, Levine, Doyle

Purpose of the Meeting

- Review key points from the Health Initiatives Committee Advisory Group meeting
- Update the Committee on information gathered for the Work Plan
- Discuss health-related workforce gaps
- Present SUS examples of curriculum innovation in medicine, nursing, and physician assistant programs prompted by changes in health care delivery

1. Call to Order and Opening Remarks Governor Ed Morton
2. Summary of Committee's Advisory Group Governor Ed Morton
April 28, 2014 Meeting
3. Environmental Scan Research Questions and Progress to Date

Health-related workforce gaps

Amy Beaven
Director, STEM/Health Initiatives

Nursing workforce gaps

Mary Lou Brunnell, MSN, RN,
*Executive Director,
Florida Center for Nursing*

Issues in health care delivery

Alma Littles, M.D.,
Special Advisor, STEM/Health Initiatives

Break

4. University Curriculum and Training Presentations

Florida State University

John P. Fogarty, M.D.,
*Dean, College of Medicine
Chair, Florida Council of Medical School Deans*

Florida International University

John Rock, M.D.,
*Senior Vice President for Medical Affairs
and Dean, College of Medicine*

**University of South Florida,
Medicine Program
And Physician Assistant Program**

Charles J. Lockwood, MD, MHCM,
*Senior Vice President
and Dean, College of Medicine*

Questions

Break

Florida Agricultural & Mechanical University

Ruena Norman, PhD, RN,
Dean, School of Nursing

University of Florida

Anna M. McDaniel, PhD, RN, FAAN,
Dean, College of Nursing

Questions

5. Discussion

All Participants

6. Closing Remarks and Adjournment

Governor Morton

Florida Board of Governors



Upcoming Meeting Information

Health Initiatives Committee Workshop

July 21, 2014

Executive Boardroom, 2nd Floor, CAMLS, 124 S. Franklin St., USF, Tampa, FL 33602

Health Initiatives Committee Workshop

Monday, July 21, 2014, 12:00 p.m. - 4:00 p.m.

1. **Call to Order and Opening Remarks:** - *Governor Ed Morton*
2. **Approval of Committee Meeting Minutes:** - *Governor Morton*
3. **Summary of Committee's Advisory Group:** - *Governor Morton*
4. **Enrивonmental Scan Research Questions and Progress to Date:**
 - Health-related Workforce Gaps - *Amy Beaven, Director, STEM/Health Initiatives*
 - Nursing Workforce Gaps - *Mary Lou Brunnell, MSN, RN, Executive Director, Florida Center for Nursing*
 - Issues in Health Care Delivery - *Alma Littles, M.D., Special Advisory, STEM/Health Initiatives*
5. **University Curriculum and Training Presentations:**
 - Florida State University - *John P. Fogarty, M.D., Dean, College of Medicine; Chair, Florida Council of Medical School Deans*
 - University of Central Florida - *Deborah German, M.D., Vice President for Medical Affairs and Dean, College of Medicine*
 - Florida International University - *John Rock, M.D., Senior Vice President for Medical Affairs and Dean, College of Medicine*
 - Questions
 - Florida Agricultural & Mechanical University - *Ruena Norman, Ph.D., RN, Dean, School of Nursing*
 - University of Florida - *Anna M. McDaniel, Ph.D., RN, FAAN, Dean, College of Nursing*
 - University of South Florida, Physicians Assistant Program - *Charles J. Lockwood, M.D., MHCM, Senior Vice President and Dean, College of Medicine*
 - Questions
6. **Discussion:** - *All Participants*
7. **Closing Remarks and Adjournment:**
8. **Committee Packet:**



Board of Governors • 325 W. Gaines St. • Tallahassee, FL 32399 • 850.245.0466

[Accessibility](#) | [Privacy Statement](#) | [Regulations](#) | [Statement on Collection and Use of SSN](#)

Copyright State University System of Florida Board of Governors © 2014. For problems or questions regarding the web-site, please contact the WebManager. Under Florida law, e-mail addresses are public records. If you do not want your e-mail address released in response to a public-records request, do not send electronic mail to this agency. Instead contact the office or individual by phone or in writing.

Site design by 3W Studios.

This page intentionally left blank



**Herbert Wertheim
College of Medicine**

**Green Family Foundation
NeighborhoodHELP™**

**Beyond Traditional Medical Education
Preparing Students for the
Realities of the Future**

John A. Rock, M.D.
**FOUNDING DEAN AND
SENIOR VICE PRESIDENT FOR HEALTH AFFAIRS**

BACKGROUND

Created in 2007 to:



Address community healthcare challenges by educating physicians to be socially responsible and expertly trained



Prepare physicians for the new millennium where a national and regional physician shortage is projected

Curriculum

Five thematic integrated strands in four years of study:

Human Biology
(Core sciences)

Disease, Illness and Injury
(Pathology)

Clinical Medicine
(Doctor-patient communication, physical exam)

Professional Development

Medicine and Society

Medicine and Society Strand

Period I:	Ethical Foundation	Socio-Economic and Cultural Aspects	Interdisciplinary Professional Approaches
Period II:	Community Engaged Physician I		
Period III:	Community Engaged Physician II	Family Medicine Clerkships	
Period IV:	Community Engaged Physician III	Community Medicine Practicum	

THE WHY

**An obligation to address health concerns,
which consists of seven competencies:**

Medical Knowledge

Patient Care

Interpersonal Communication Skills

Professional Development

System-Based Practice

Practice-Based Learning and Improvement

Social Responsibility

THE HOW

Designed a new structure and education model

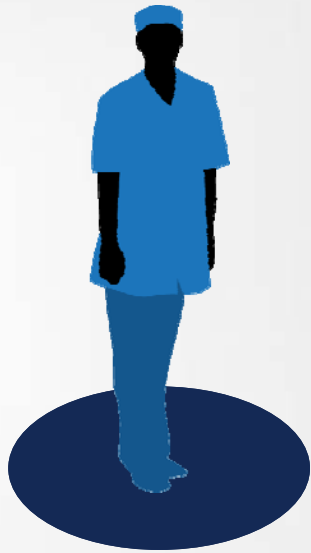
Green Family Foundation NeighborhoodHELP™:

A community-based medical education program woven throughout the curriculum that trains 21st century health professionals and addresses health needs

Panther Learning Communities:

An educational and social structure that promotes a sense of community and unity within the medical school environment

Educational Objectives:



Interdisciplinary teams connect to a household in the community for hands on learning about



- > SOCIAL DETERMINANTS OF HEALTH
- > CULTURAL DIVERSITY
- > INTERDISCIPLINARY TEAM SKILLS
- > COMPREHENSIVE APPROACH TO HEALTH ISSUES
- > FRAMEWORK TO MANAGE ETHICAL ISSUES



Develop socially responsible, community engaged physicians and healthcare professionals

WHAT IS NEIGHBORHOODHELP?

An interdisciplinary health education learning model that:

- ✓ **Educates future physicians while engaging them with the community**
- ✓ **Provides services to medically underserved communities**
- ✓ **Exposes students to social determinants of health**
- ✓ **Brings together teams of medical, nursing, social work and law students**
- ✓ **Develops collaborative solutions with the community and university partners**
- ✓ **Is long-term and sustainable, not episodic**



FIU

Herbert Wertheim
College of Medicine

Green Family Foundation
NeighborhoodHELP

Is a signature program in the Medicine and
Society strand of the curriculum

PANTHER LEARNING COMMUNITIES

Neighborhoods: **Unincorporated NW Miami-Dade County** **Miami Gardens** **Opa-Locka** **NE Miami-Dade**

Communities:

Anderson

120 Students
30 from each class

Coordinator
Assistant
4 Faculty

Students from:
Social Work
Nursing
Law



Hippocrates

120 Students
30 from each class

Coordinator
Assistant
4 Faculty

Students from:
Social Work
Nursing
Law



Pasteur

120 Students
30 from each class

Coordinator
Assistant
4 Faculty

Students from:
Social Work
Nursing
Law



Semmelweis

120 Students
30 from each class

Coordinator
Assistant
4 Faculty

Students from:
Social Work
Nursing
Law



THEmpact

**September 2010 – June 2014, 677 FIU
medical, social, nursing, and law students
conducted 3,255 visits to 512 households
with 1202
household members**

**Data showed a decrease in the use of
emergency room visits as a regular place of
care for household members, from 61% to
26%**

**In a study completed by Trip-Umbach over
the last two years, it was estimated that for
every dollar invested in NeighborhoodHELP,
the state receives eight dollars in return**



THE FUTURE

**An innovative curriculum
that prepares medical
students to lead the
delivery of healthcare in the
new millennium and
simultaneously improves
health outcomes in
communities
and families**

INTEGRATING MEDICAL EDUCATION AND HEALTHCARE DELIVERY



Leverage what
we have
learned to



- > EDUCATE FUTURE HEALTH PROFESSIONALS
- > IMPLEMENT INTERDISCIPLINARY HOUSEHOLD-CENTERED CARE
- > INTEGRATE WITH COMMUNITY-BASED SERVICES
- > IMPROVE HEALTH OUTCOMES
- > LOWER HEALTHCARE COSTS
- > INCREASE PATIENT SATISFACTION



Develop a new
health care
delivery model that
carves the path to
the 21st century



**Herbert Wertheim
College of Medicine**

**Green Family Foundation
NeighborhoodHELP™**

**Beyond Traditional Medical Education
Preparing Students for the
Realities of the Future**

John A. Rock, M.D.
**FOUNDING DEAN AND
SENIOR VICE PRESIDENT FOR HEALTH AFFAIRS**