



FLORIDA INTERNATIONAL UNIVERSITY

BOARD OF TRUSTEES

HEALTH AFFAIRS COMMITTEE

Thursday, September 1, 2016

9:30 am *approximate start time

Florida International University
Modesto A. Maidique Campus
Graham Center Ballrooms

Committee Membership:

Jose J. Armas, *Chair*; Justo L. Pozo, *Vice Chair*; Cesar L. Alvarez; Jorge L. Arrizurieta; Leonard Boord;
Michael G. Joseph

AGENDA

1. **Call to Order and Chair's Remarks** Jose J. Armas
2. **Approval of Minutes** Jose J. Armas
3. **Academic Health Center Reports** (*No Action Required*)
 - 3.1 Course of Action for Passing Rates for National Council of Licensure Examination Ora L. Strickland
 - 3.2 General Update John A. Rock
 - 3.3 Integration of FIU Student Health Services with the FIU Health Care Network Eneida O. Roldan
 - 3.4 Benchmark Analysis of Student Health Services within the State University System Eneida O. Roldan
 - 3.5 Overview of FIU Health Care Network Behavioral Services Eneida O. Roldan
4. **Information Items** (*No Action Required*)
 - 4.1 School of Integrated Science and Humanity Walter Van Hamme
 - 4.2 Herbert Wertheim College of Medicine John A. Rock
 - 4.3 Robert Stempel College of Public Health and Social Work Update Tomás R. Guilarte
 - 4.4 Nicole Wertheim College of Nursing and Health Sciences Ora L. Strickland
 - 4.5 Board of Governors Health Initiatives Committee John A. Rock
5. **New Business** (*If Any*) Jose J. Armas
6. **Concluding Remarks and Adjournment** Jose J. Armas

This page intentionally left blank

Approval of Minutes

Health Affairs Committee Meeting

Date: September 1, 2016

Subject: Approval of Minutes of Meetings held: December 9, 2015 and June 2, 2016

Proposed Committee Action:

Approval of Minutes of the Health Affairs Committee meetings held on Wednesday, December 9, 2015 at the Modesto A. Maidique Campus, Graham Center Ballrooms; and June 2, 2016 at the Modesto A. Maidique Campus, the Patricia & Phillip Frost Art Museum, room 105-107.

Background Information:

Committee members will review and approve the Minutes of the Health Affairs Committee meetings held on Wednesday, December 9, 2015 at the Modesto A. Maidique Campus, Graham Center Ballrooms; and June 2, 2016 at the Modesto A. Maidique Campus, the Patricia & Phillip Frost Art Museum, room 105-107.

This page intentionally left blank



**FLORIDA INTERNATIONAL UNIVERSITY
BOARD OF TRUSTEES
HEALTH AFFAIRS COMMITTEE
MINUTES
DECEMBER 9, 2015**

1. Call to Order and Chair's Remarks

The Florida International University Board of Trustees' Health Affairs Committee meeting was called to order by Committee Vice Chair Justo L. Pozo at 10:36 am on Wednesday, December 9, 2015, at the Modesto A. Maidique Campus, Graham Center Ballrooms.

The following attendance was recorded:

Present

Jose J. Armas, *Chair*
Justo L. Pozo, *Vice Chair*
Cesar L. Alvarez
Jorge L. Arrizurieta
Claudia Puig

Excused

Michael G. Joseph

Trustees Alexis Calatayud, Natasha Lowell and Kathleen L. Wilson, and University President Mark B. Rosenberg were also in attendance.

Committee Vice Chair Pozo noted that Committee Chair Jose J. Armas sent his regrets as he would be joining the meeting late.

Committee Vice Chair Pozo welcomed all Trustees, University faculty and staff to the meeting. He congratulated Dean of the Nicole Wertheim College of Nursing and Health Sciences Ora Strickland on being selected as one of Plaza Health Network's 2016 Women of Distinction.

2. Approval of Minutes

Committee Vice Chair Pozo requested that the Minutes be approved at a later time in the meeting. There were no objections.

3. Academic Health Center (AHC) Reports

3.1 AHC Update

Dean and Senior Vice President for Health Affairs, John A. Rock, provided an update on the AHC noting that the University has made significant progress in establishing the AHC elements. He provided an overview of the various components and how they collaborated with the AHC such as the work with the Governmental Relations office on legislative issues and Advancement on focus

team fundraising. He also discussed the planning of the AHC Learning Center noting that this will serve to provide critical space for clinical skills training.

VP Rock provided an update on telehealth services, noting that telemedicine has the potential to eliminate distance as a barrier to health care and is expected to increase medical access without increasing health costs. VP Rock also recognized and thanked Trustee Claudia Puig for her leadership in Univision Radio and the partnership with the FIU Herbert Wertheim College of Medicine in producing a weekly Spanish-language radio program, *A Tu Salud*, which addresses timely and important health issues within the community.

Committee Chair Jose Armas apologized for his late arrival and thanked Vice Chair Pozo serving as the Committee's Chair for the earlier part of the meeting.

3.1 Integration of FIU Student Health Services with the FIU HealthCare Network

Chief Executive Officer of FIU Health, Encida O. Roldan, provided an update on the integration of FIU Student Health Services (SHS) with the FIU HealthCare Network (HCN). She noted that the realignment and integration process of FIU SHS with the FIU HealthCare Network was completed a month earlier than expected on November 3.

Dr. Roldan stated that FIU SHS delivers services at two sites: Modesto A. Maidique Campus and the Biscayne Bay Campus. She further stated that on July 1, 2015, the clinical portion of FIU SHS was transferred to FIU Health for the purpose of managing full operations, inclusive of Pharmacy services. She also provided an overview of the Due Diligence Plan which was implemented in July 2015 and ended in September 2015. She noted that this plan provided a review of administrative support positions, potential synergies and efficiencies, meetings with all stakeholders: administration, clinical, students, and student representatives, amongst other actions.

Dr. Roldan noted that the goal of the integration is to increase utilization and presented the strategies in place to reach the goal. She provided an overview of the Action Plan which was reviewed in November. She delineated the realignment metrics of the SHS and the table of operations. She further noted that the cost savings, totaling approximately \$1.2M annualized (approximately \$900,000 FY 15-16), from the realignment will be reinvested to enhance various clinical services such as increased gynecology services, increased internal medicine services, and enhanced behavioral services, among others. She concluded that the next steps of the integration included implementing Population Health Management for FIU Students, utilizing electronic Health Records, Data and Dashboards, and obtaining accreditation from AAAHC: Accreditation Association for Ambulatory Health Care.

Committee Chair Armas inquired on how student awareness and understanding impacted utilization. Dr. Roldan noted that once the marketing strategies were implemented complete data regarding utilization would be available.

Dr. Roldan stated that at the next Committee meeting she will provide information responsive to Trustee Armas' question regarding utilization, before and after the integration.

4. Information Items

Committee Chair Armas requested that the reports within the Information Items be accepted as written. There were no objections.

5. New Business

No new business was raised.

2. Approval of Minutes

Committee Chair Armas asked that the Committee members approve the Minutes of the meeting held on September 10, 2015. A motion was made and passed to approve the Minutes of the Health Affairs Committee Meeting held on Thursday, September 10, 2015 at the Modesto A. Maidique Campus, Graham Center Ballrooms.

6. Concluding Remarks and Adjournment

Committee Chair Armas requested a joint meeting of the FIU HealthCare Network Board and the Board of Trustees Health Affairs Committee.

Committee Chair Armas requested that Dr. Eneida O. Roldan continue to provide updates on the progress of the integration of FIU Student Health Services with the FIU HealthCare Network.

With no other business, Committee Chair Jose J. Armas adjourned the meeting of the Florida International University Board of Trustees Health Affairs Committee on Wednesday, December 9, 2015 at 11:11 a.m.

<i>Trustee Requests</i>	<i>Follow-up</i>	<i>Completion Date</i>
1. <i>Committee Chair Armas requested that Dr. Eneida O. Roldan continue to provide updates on the progress of the integration of FIU Student Health Services with the FIU Health Care Network.</i>	<i>Chief Executive Officer, FIU Health Associate Dean, Eneida O. Roldan</i>	<i>Ongoing</i>
2. <i>Chairman Armas requested a joint meeting of the FIU HealthCare Network Board and the Board of Trustees Health Affairs Committee</i>	<i>Dean and Senior Vice President for Health Affairs Dr. John A. Rock</i>	<i>Summer 2016</i>

C.S.
12.21.15

This page intentionally left blank



**FLORIDA INTERNATIONAL UNIVERSITY
BOARD OF TRUSTEES
HEALTH AFFAIRS COMMITTEE
MINUTES
JUNE 2, 2016**

1. Call to Order and Chair's Remarks

The Florida International University Board of Trustees' Health Affairs Committee meeting was called to order by Committee Chair Jose J. Armas at 11:55 am on Thursday, June 2, 2016, at the Modesto A. Maidique Campus, the Patricia & Phillip Frost Art Museum, room 105-107.

The following attendance was recorded:

Present

Jose J. Armas, *Chair*
Justo L. Pozo, *Vice Chair*
Jorge L. Arrizurieta
Leonard Boord
Michael G. Joseph

Excused

Cesar L. Alvarez

Trustees Alian Collazo, Natasha Lowell and Kathleen L. Wilson, and University President Mark B. Rosenberg were also in attendance.

Committee Chair Armas welcomed all Trustees, University faculty and staff to the meeting.

2. Approval of Minutes

Committee Chair Armas requested that the approval of the Minutes be deferred. There were no objections.

3. Academic Health Center Reports

3.1 General Update

Dean and Senior Vice President for Health Affairs, John A. Rock, provided an updated on the 2015-16 Accreditation Council for Graduate Medical Education (ACGME) Residency Program Affiliations. He stated that the ACGME sets standards for U.S. graduate medical education (residency and fellowship) programs, as well as the institutions that sponsor them, and renders accreditation decisions based on compliance with those standards. He noted that currently 268 slots are approved, adding that an additional 103 slots are pending approval.

3.2 Integration of FIU Student Health Services with the FIU HealthCare Network

Chief Executive Officer of FIU Health, Eneida O. Roldan, provided an update on the integration of FIU Student Health Services with the FIU HealthCare Network (HCN). She provided an overview on clinical services, communication with stakeholders and next steps. She presented data on enrolled students paying the health fee, total patient visits by site, and pharmacy utilization. She also delineated provider capacity and no shows and cancellations.

Committee Chair Armas requested, for the next regularly scheduled meeting of the Committee, an analysis that benchmarks student health services within the State University System (SUS), as well as across the country. Committee Chair Armas also requested, for the next regularly scheduled meeting of the Committee, an overview of the HCN's Behavioral services.

3.3 Nicole Wertheim College of Nursing and Health Sciences

Nicole Wertheim College of Nursing and Health Sciences (NWCNHS) Dean Ora L. Strickland provided an overview of strategic priorities, enrollment, and demand. She noted that the U.S. Bureau of Labor Statistics projects employment growth in NWCNHS disciplines and delineated the upward trajectories in the five-year trends in grant funding and external funding. Dean Strickland described collaborations within the Academic Health Center and how the College integrates technology, education, and research.

University President Mark B. Rosenberg noted the decrease in the University's first-time pass rates for the Nursing professional/licensure exam, which he reported were below the national average. He added that Florida has seen an increase in the number of nursing graduates over the years in anticipation of a statewide shortage. Dean Strickland stated that more stringent testing standards resulted in a greater number of students struggling to pass the standard licensing exam. President Rosenberg indicated that the University must strive for higher passing results with each cohort of current and new students in order to ensure that FIU Nursing students are provided with a quality education that also prepares them for professional practice in their chosen field.

Committee Chair Armas requested, for the next regularly scheduled meeting of the Committee, a course of action for increasing the first time passing rates for students taking the National Council Licensure Examination, as measured by the SUS.

4. Information Items

Committee Chair Armas requested that the reports within the Information Items be accepted as written. There were no objections.

5. New Business

No new business was raised.

6. Concluding Remarks and Adjournment

With no other business, Committee Chair Jose J. Armas adjourned the meeting of the Florida International University Board of Trustees Health Affairs Committee on Thursday, June 2, 2016 at 12:39 p.m.

<i>Trustee Requests</i>	<i>Follow-up</i>	<i>Completion Date</i>
1. <i>Committee Chair Armas requested that Dr. Eneida O. Roldan continue to provide updates on the progress of the integration of FIU Student Health Services with the FIU Health Care Network.</i>	<i>Chief Executive Officer, FIU Health Associate Dean, Eneida O. Roldan</i>	<i>Ongoing</i>
2. <i>Committee Chair Armas requested, for the next regularly scheduled meeting of the Committee, an analysis that benchmarks student health services within the State University System, as well as across the country.</i>	<i>Chief Executive Officer, FIU Health Associate Dean, Eneida O. Roldan</i>	<i>September 1, 2016</i>
3. <i>Committee Chair Armas also requested, for the next regularly scheduled meeting of the Committee, an overview of the HCN's Behavioral services.</i>	<i>Chief Executive Officer, FIU Health Associate Dean, Eneida O. Roldan</i>	<i>September 1, 2016</i>
4. <i>Committee Chair Armas requested, for the next regularly scheduled meeting of the Committee, a course of action for increasing the first time passing rates for students taking the National Council Licensure Examination, as measured by the SUS.</i>	<i>Nicole Wertheim College of Nursing and Health Sciences Dean Ora L. Strickland</i>	<i>September 1, 2016</i>

MB 6.10.16

This page intentionally left blank




Board of Trustees Health Affairs Committee

Academic Health Center Reports

September 2016

- 3.3 Integration of FIU Student Health Services with the FIU Health Care Network –
Operations Dashboard
- 3.4 Benchmark Analysis of Student Health Services within the State University System
- 3.5 Overview of FIU Health Care Network Behavioral Services

3.3 Student Health Services – Operations Dashboard

		SHS - Modesto Maidique Campus (MMC)																
		Fiscal Year: July 1, 2015 - June 30, 2016																
Month	Target	July	August	September	Qtr. 1	October	November	December	Qtr. 2	January	February	March	Qtr. 3	April	May	June	Qtr. 4	Grand Total
Operations																		
# of New Patients		116	150	348	614	386	200	105	691	172	194	190	556	150	122	113	385	2,246
# of Existing Patients		556	700	1,025	2,281	1,076	817	619	2,512	757	891	828	2,476	860	600	541	2,001	9,270
Total Provider Visits		672	850	1,373	2,895	1,462	1,017	724	3,203	929	1,085	1,018	3,032	1,010	722	654	2,386	11,516
Total Nursing Visits		1,163	934	590	2,687	818	710	418	1,946	573	453	762	1,788	616	497	812	1,925	8,346
No Show Rate by # of Patients		75	86	124	285	135	91	68	294	78	124	105	307	123	72	79	274	1,160
No Show Rate by %		4.09%	4.82%	6.32%	5.11%	5.92%	5.27%	5.95%	5.71%	5.19%	8.06%	5.90%	6.37%	7.56%	5.91%	5.39%	6.36%	5.84%
Cancellation Rate by Provider (#)		64	33	69	166	43	64	37	144	30	37	32	99	18	31	26	75	484
Cancellation Rate by Patient (#)		142	155	252	549	238	176	128	542	119	179	204	502	150	189	137	476	2,069
Total # of Patients Canceled		206	188	321	715	281	240	165	686	149	216	236	601	168	220	163	551	2,553
% of Cancellation		11.23%	10.54%	16.35%	12.81%	12.32%	13.90%	14.45%	13.32%	9.92%	14.04%	13.26%	12.47%	10.33%	18.05%	11.12%	12.78%	12.85%

FIU Health		SHS - Biscayne Bay Campus (BBC)																
		Fiscal Year: July 1, 2015 - June 30, 2016																
Month	Target	July	August	September	Qtr. 1	October	November	December	Qtr. 2	January	February	March	Qtr. 3	April	May	June	Qtr. 4	Grand Total
Operations																		
# of New Patients		12	21	26	59	28	22	9	59	17	21	18	56	17	11	15	43	217
# of Existing Patients		74	98	137	309	141	112	89	342	85	172	92	349	14	89	59	162	1,162
Total Provider Visits		86	119	163	368	169	134	98	401	102	193	110	405	31	100	74	205	1,379
Total Nursing Visits		111	111	110	332	118	92	97	307	57	20	112	189	169	115	64	348	1,176
No Show Rate by # of Patients		10	10	12	32	15	9	10	34	8	13	18	39	19	13	17	49	154
No Show Rate by %		5.08%	4.35%	4.40%	4.57%	5.23%	3.98%	5.13%	4.80%	5.03%	6.10%	8.11%	6.57%	9.50%	6.05%	12.32%	8.86%	6.03%
Cancellation Rate by Provider (#)		6	11	21	38	7	6	9	22	3	4	3	10	1	4	9	14	84
Cancellation Rate by Patient (#)		14	16	21	51	28	14	27	69	16	21	33	70	27	30	16	73	263
Total # of Patients Canceled		20	27	42	89	35	20	36	91	19	25	36	80	28	34	25	87	347
% of Cancellation		10.15%	11.74%	15.38%	12.71%	12.20%	8.85%	18.46%	12.85%	11.95%	11.74%	16.22%	13.47%	14.00%	15.81%	18.12%	15.73%	13.58%

3.4 Benchmark Analysis of Student Health Services within the State University System

Comparison of SHS Across State University System

	FIU	UF	FSU	USF	UCF	UNF	FAMU	FAU	FGCU
Student Health Fee (\$)*	\$7.80 / Credit Hour, approximately \$93.69 per Semester	\$15.81/ Credit Hour, approximately \$189.72 per semester	\$13.97/Credit Hour, approximately \$167.64 per semester	\$9.94/ Credit Hour, approximately \$119.28 per semester	\$10.84/ Credit Hour, approximately \$130.08 per semester	\$4.07/ Credit Hour, approximately \$48.84 per semester	\$6.91/Credit Hour, approximately \$82.92 per semester	\$9.42/Credit Hour, approximately \$113.04 per semester	\$9.24/ Credit Hour, approximately \$110.08 per semester
Who Is eligible for services?	All registered students in an <u>on campus</u> program paying the tuition-included student health fee are eligible for services at the Student Health Center.	All registered students paying the tuition-included student health fee are eligible for services at the Student Health Center.	All registered students paying the tuition-included student health fee are eligible for services at the Student Health Center.	All registered students paying the tuition-included student health fee are eligible for services at the Student Health Center.	All registered students paying the tuition-included student health fee are eligible for services at the Student Health Center.	All registered students paying the tuition-included student health fee are eligible for services at the Student Health Center.	All registered students paying the tuition-included student health fee are eligible for services at the Student Health Center.	All registered students paying the tuition-included student health fee are eligible for services at the Student Health Center.	All registered students paying the tuition-included student health fee are eligible for services at the Student Health Center.

Comparison of SHS Across State University System

	FIU	UF	FSU	USF	UCF	UNF	FAMU	FAU	FGCU
Insurance Mandate (Yes/No)	No. However, students can purchase a comprehensive health insurance plan insured through United Healthcare Student Resource.	Yes. All students must show proof of insurance. United Health Insurance- Offered to students, if not must show insurance is comparable to the one provided by UF.	Yes. All students must show proof of insurance. United Health Insurance- Offered to students, if not must show insurance is comparable to the one provided by FSU.	No. However, USF accepts a variety of insurance policies to be used at Student Health.	No. Students are encouraged however to pre-register their insurance if they have a policy or can purchase UCF Gallagher Student Health plan.	No. Do not offer insurance for students to purchase.	Yes. Students must provide proof of health insurance coverage. Students that fail to provide documentation or that do not have appropriate coverage will be automatically enrolled in the University sponsored student health insurance plan.	No. Students can purchase a voluntary Injury and Sickness Insurance Plan underwritten by Aetna Life Insurance Company.	No. However, FGCU Student Health Services does not take health insurance other than the FGCU Arthur J. Gallagher & Company sponsored plan.

Overview of Student Health Behavioral Services

	FIU	UF	FSU	USF	UCF	UNF	FAMU	FAU	FGCU
Services Offered	Acupuncture, Aromatherapy, Athletic physicals, Dermatology, General Care, Gynecology, Massage Therapy, Mental Health services, Pharmacy	Allergy Injection Clinic, EKG's, General Care, Laboratory, LGBTQ+ Care & Resources, Nutrition Services, Occupational Medicine, Pharmacy, Physical Therapy, Radiology Sports Medicine Clinic, Travel Counseling/Vaccinations, Women's Health Clinic	Acute Injury and Illness Urgent Care Services, Allergy Clinic, Basic Outpatient Family Practice Services, General Care, HIV and STD Testing, Immunizations, Laboratory, Nutrition Assessments, Radiology, Physical Therapy, Psychiatry, Women's Health Service	General Medical Care, Immunizations and Allergy Shots, Mental Health Services, Nutrition Counseling, Primary Care, Sexual Health and Gynecology, Tobacco Cessation, Travel Health	Alcohol and Narcotics therapy, Allergy Injections, Dental Care, Diabetes Care, Eating Disorder Management, General Health Care, Immunizations, Laboratory Women's Care, Massage Therapy, Mental Health services, Nutrition Services, Pharmacy, Physical Therapy, Radiology, Relaxation Station, Sharps Disposal, Sports Medicine, Stress Management, Travel Immunizations	General Care, Gynecological Exams, Allergy Injections, Laboratory Services, Minor Surgical Procedures, Physical Exams, Pregnancy Testing, Referrals for Specialist Care, STD Screening and Treatment, TB Skin Testing, X-Rays	Annual Gynecological Exams, Complete Physical Exams, EKG's, Family Planning, Health and Wellness Counseling, HIV Testing, Immunizations and Allergy Shots, Laboratory Studies, PAP Smears, Pre-Athletic Physicals, STD Screening, Treatment of Chronic Medical Conditions (Such As High Blood Pressure, Diabetes, Asthma)	Dental Care, General Care, Men's Health Services, Mental Health Services, Nutrition Services, Pharmacy, Women's Health Services	Contraceptive Counseling, EKG's, Family Planning Consultations, Health Screenings, HIV Testing, Immunizations, Laboratory Tests, Minor Surgical Procedures, Nutritional Assessment and Counseling, Pap Smears, Physical Examinations, Pregnancy Tests, Preventive Medicine, Psychological Services, Referrals For Specialist Care, Routine Medical Care, STD Testing, TB Screenings

Comparison of SHS Across State University System

	FIU	UF	FSU	USF	UCF	UNF	FAMU	FAU	FGCU
Hours of Operation	Mon & Tues: 8am - 6:30pm Wed & Thurs: 8am - 5pm	Fall/Spring: Mon-Fri: 8am - 5:30pm Sun: 12pm - 4:30pm Summer: Mon-Fri: 8am - 4:30pm	Mon-Fri: 8am - 5pm	Fall/Spring: 8am - 5:30pm Summer: 8am - 4:30pm Wednesdays 9:30am - 4:30pm Break Weeks: 8am - 4:30pm	Mon-Fri: 8am - 5pm	Mon-Fri: 8am - 5pm	Mon-Fri: 8am - 5pm	Fall/Spring: Mon-Thur: 8am - 6pm Friday: 8am - 5pm Saturday: 10am - 2pm Summer: Mon-Fri: 8am - 5pm	Mon-Thurs: 8:15am - 4:45pm Fri: 9am - 4:45 pm
Residential versus Commuter Freshman Students	22% On Campus 78% Off Campus	79.87% On Campus 20.13% Off Campus	62.7% On Campus 37.3% Off Campus	76.3% On Campus 23.7% Off Campus	66.3% On Campus 33.7% Off Campus	91% On Campus 9% Off Campus	Not Reported to the Common Data Set.	62% On Campus 38% Off Campus	Common Data Set for 15-16 is unavailable.

Note: All information regarding student health centers' was retrieved from respective university's student health web page. Information on Freshman Commuter and Residential student make up was retrieved from each university's Common Data Set for the 15-16 Academic Year.

Benchmark Analysis of Across State University System

		Based on 2014 Sunbelt Survey					
Penetration Rate	FIU Now (2015-2016)	FIU	UF	FSU	USF	UCF	Florida Gulf Coast
Fall Enrollment	54,058	59,898	N/R	41,773	N/R	60,810	14,673
Number of Discrete Students*	12,518	12,153	N/R	19,452	N/R	21,591	5,540
Penetration Rate**	23%	20.29%	N/R	46.57%	N/R	35.51%	37.76%
On Campus Freshman Residents	22%	24%	79.10%	64.5%	77%	68.5%	80%
Off Campus Freshman Residents	78%	76%	20.90%	35.5%	23%	31.5%	20%
Source of Data: Sunbelt Survey Completed in 2014; Self-Reported by individual university and not verified by Coordinator with Sunbelt. Commuter and Residential student make up was retrieved from each university's Common Data Set for the 14-15 Academic Year. N/R = Not reported.							
Not Listed in Report: Florida A&M, Florida Atlantic University, University of Central Florida.							
*Number of individual students who used the health services at least once.							
**The percentage of enrollment that used the health service. For instance, a rate of 42% means 42% of the individual students at the university used the health services at least once.							

Benchmark Analysis of Across State University System

		Based on 2014 Sunbelt Survey					
Student Visit by Type of Provider	FIU Now (2015-2016)	FIU	UF	FSU	USF	UCF	Florida Gulf Coast
Visits by Students to Student Health Services	31,520	35,201	57,896	69,503	N/R	75,800	59,68
Patient Visits to MD/DO	4,115	7,699	20,529	19,474	N/R	18,709	2,830
Patient Visit's to Nurse Practitioner	8,998	13,193	16,776	16,686	N/R	17,202	8,081
Patient Visit's to RN/LPN	7,622	10,860	21,614	8,665	N/R	14,133	2,719
Patient Visits to Psychologist	N/A	N/R	N/R	N/R	N/R	N/R	N/R
Patient Visits to Psychiatrist	1,091	46*	N/R	5,342	N/R	4,856	N/R
Source of Data: Sunbelt Survey Completed in 2014; Self-Reported by individual university and not verified by Coordinator with Sunbelt. N/R = Not reported.							
Not Listed in Report: Florida A&M, Florida Atlantic University, University of Central Florida.							
*Only BBC reported for the metric.							

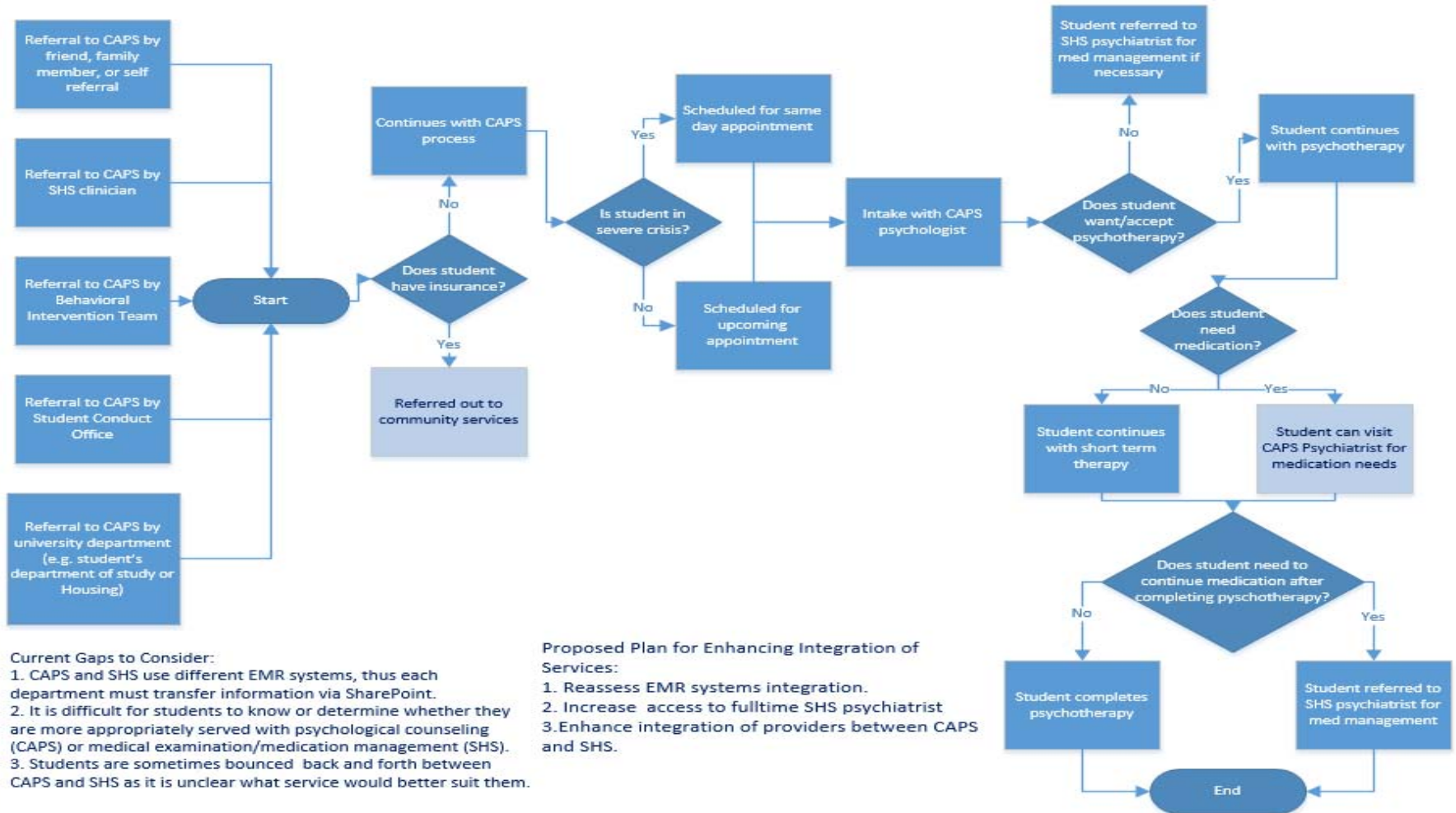
Benchmark Analysis of within State University System

		Based on 2014 Sunbelt Survey					
# of Special Orders and/or Services Provided to Students	FIU Now (2015-2016)	FIU	UF	FSU	USF	UCF	Florida Golf Coast
Number of Lab Patients	4,152	650*	7,999	14,692	N/R	7,969	2,765
Number of Lab Tests	17,010	15,531	22,752	42,250	N/R	22,985	7,038
Pharmacy Prescriptions Filled/Refilled	24,489	18,330	31,336	N/R	N/R	70,277	N/R
Source of Data: Sunbelt Survey Completed in 2014; Self-Reported by individual university and not verified by Coordinator with Sunbelt. N/R= Not reported.							
Not Listed in Report: Florida A&M, Florida Atlantic University, University of Central Florida.							
*Only BBC reported for the metric.							

3.5 Overview of FIU Health Care Network Behavioral Services

Current Behavioral Health Services Workflow

Referral to Services



Counseling and Psychological Services Access and Walk-In Report

2015-2016 CAPS Access and Referrals

# of Walk-In to CAPS	# of Intakes	# Referrals FROM CAPS to SHS	# Referrals TO CAPS from SHS
1893*	972	54	47
*Number of potential students seeking Counseling/Behavioral Services at CAPS			
Data provided by Dr. Odera and Dr. Nowell			

2015-2016 Client Walk-In Reports (N=1893)

What brings you to CAPS at this time?		
Anxiety	1410	66.70%
Depression	1113	52.60%
Self esteem/confidence	776	36.70%
Family relationship stress	720	34.00%
Academic problems	646	30.50%
Sleep difficulties	622	29.40%
Interpersonal relationship problems	581	27.50%
Social isolation	425	20.10%
Career issues (e.g. difficulty with major)	350	16.50%
ADHD/learning issues	315	14.90%
Eating concerns/body image issues	300	14.20%
Sexual assault issues (stalking, trauma, etc.)	266	13.70%

Clinician Assessment Based on Walk-In Consultations

- **47.2%** of clients have **never** been in treatment
- **52.3%** of clients report **neurovegetative symptoms of depression**
- **8.4%** of clients have **suicidal/homicidal thoughts**
- **18.6%** of clients are in a **high conflict or abusive relationship**
- **22.3%** of clients have **concerns about eating behaviors and/or weight**
- **25.4%** of clients have a **medical problem**
- **80.3%** of clients have a **support system**
- **77.4%** of clients seen at walk-in are **scheduled for future services** at CAPS

Mental Health Profile of CAPS Clients at Intake

- **65%** of clients are experiencing **stress related to their major/career**
- **25%** have engaged in **binge drinking** at least one
- **16%** have **smoked marijuana** at least once
- **23%** of clients have felt a **need to reduce the use of alcohol and drugs**
- **9%** of clients have **attempted suicide** at least once
- **18%** of clients have had **unwanted sexual experiences** during the last 5 years
- **36%** of students have experienced **PTSD symptoms**
- **45%** have **never** been to counseling
- **72%** of clients have **never** been on psychotropic medication
- **88%** of clients have **never** had a psychiatric hospitalization

Diagnoses Frequency

Diagnoses	Occurrence	% of Clients
Depressive Disorders	322	36.20%
Other Anxiety Disorders	252	24.50%
Generalized Anxiety Disorder	151	15.30%
Relational Problems	135	14.70%
Adjustment Disorders	120	12.80%
ADHD/Other Learning Disorders	112	12.50%
PTSD & Other Trauma-related Disorders	104	10.70%
Persistent Depressive Disorder	92	9.73%
Phase of Life	65	7.10%
Substance -related Disorders	37	3.80%
Eating Disorders	34	3.30%
Personality Disorders	32	3.20%
Diagnoses Deferred/No Diagnoses	53	5.40%

Note: Information regarding CAPS was provided by Dr. Odera and Dr. Nowell.

**Report to the Board of Trustees Health Affairs Committee
September 2016**

The School of Integrated Science and Humanity (SISH) in the College of Arts, Sciences & Education provides a multi-disciplinary home for the study of health-themed sciences such as biochemistry, biophysics, neuroscience, and cognitive and behavioral sciences. The following provides an update of recent health-related initiatives of the School.

BIOMOLECULAR SCIENCES INSTITUTE (BSI)

Director: Dr. Yuk-Ching Tse-Dinh

A Biomolecular Sciences Institute investigator team of experts in cancer biology, DNA repair, and drug screening has been awarded \$75,000 by the Community Foundation of Broward to continue the project "Investigation of Novel Treatment for Advanced Prostate Cancer." During the first year, a new screening method to identify DNA repair inhibitors was developed. During the second year, this screening method will be utilized to identify FDA-approved drugs that are the most effective at inhibiting DNA repair in prostate cancer cells. The strongest inhibitors will be tested in androgen-dependent and treatment-resistant cell lines for their ability to synergistically impair prostate cancer cells when combined with castration therapy. The effects of castration therapy will be reproduced in cell cultures either by androgen deprivation or by anti-androgen treatment. The results are expected to increase the likelihood of developing effective treatments for recurrent cancers that have been resistant to prior therapy.

CENTER FOR CHILDREN AND FAMILIES (CCF)

Director: Dr. William Pelham

The Center for Children and Families (CCF) is a multidisciplinary team of researchers and service providers committed to improving the lives of children with mental health problems and their families. The CCF is the leading provider of evidence-based services for children with ADHD in Miami, and since its establishment in 2010, it has served approximately 10,000 families across clinical and research programs. The renowned Summer Treatment Program (STP) (summer 2016) served 264 children, and was expanded to include other mental health conditions such as Autism Spectrum Disorder and Selective Mutism. A new Pre-K STP was developed in Little Haiti at Thena Crowder Elementary School. The CCF Summer Reading Explorers Program, an intervention designed to improve literacy skills in young children, (summer 2016) served 1659 children. Throughout the last academic year (2015-16), the CCF has hosted talks by 22 mental health experts, and attendance of the center's Speaker Series and free Community Workshop events reached over 1000 individuals. More than 2000 online workshops and keynotes have been viewed through the CCF online evidence-based training website, <http://effectivechildtherapy.fiu.edu/>.

In addition to the 23 million in research support leveraged by state funding during the fall of 2015, CCF faculty obtained an additional three awards amounting to \$973,287 in the third quarter of 2015-2016. In the 4th quarter, the CCF began implementation of four Children's Trust funded summer programs that applied award winning behavioral interventions for children ranging from pre-school age through middle school spanning Miami-Dade County. Also in that period, CCF faculty obtained new NIMH and IES funding totaling \$475K. In recognition of its accomplishments, the CCF and its faculty have been the recipient of multiple awards, including the 2016 Miami Beacon Council Life Sciences and Healthcare Award in recognition of the importance and quality of CCF work in the arena of clinical services.

COGNITIVE NEUROSCIENCE AND IMAGING CENTER (CNIC)

Director: Dr. Angela Laird

The Cognitive Neuroscience and Imaging Center is a multidisciplinary group of faculty focusing on understanding mental processes in the healthy and diseased human brain across the lifespan. The FIU Office of Research and Economic Development (ORED) and CNIC have acquired a 3.0 Tesla Siemens MAGNETOM Prisma to support magnetic resonance imaging research at FIU. This MRI was installed in the renovated health clinic area of PG-5 in August of 2016, and is expected to be operational for research studies by October 2016. The instrument will be used to acquire functional and structural neuroimaging data for the Adolescent Brain Cognitive Development (ABCD) Study (PIs: Raul Gonzalez and Angela Laird) sponsored by the National Institutes of Health at \$12.7M over five years. It will also provide liver elastography data for the Miami Adult Studies on HIV (MASH) Study (PI Marianna Baum), and data for multiple other pilot imaging projects by CNIC members and their collaborators.



**Report to the Board of Trustees Health Affairs Committee
September 2016**

College of Medicine spearheads partnership to create FIU-FAST Team

If ever disaster strikes, the FIU-Florida Advanced Surgical Transport team (FIU-FAST) is trained, ready, and equipped to treat and evacuate critical care patients. Under the leadership of Founding Dean and Sr. VP for Health Affairs John A. Rock, the already established FAST Team partnered with the Herbert Wertheim College of Medicine (HWCOM), and the FIU Department of Emergency Management to enhance the only civilian team of its kind in the nation, that can supplement local hospital critical care and ICU capabilities following a terrorist attack, natural disaster, or other major incident. The FIU-FAST team has the ability and training to set up a ten-bed intensive care unit to perform life-saving surgical procedures and critical care, as well as transport critical care patients to and from hospitals in civilian or military planes.

The new FIU-FAST team is supported by community partners that include Baptist Health South Florida, the Batchelor Foundation, Florida Blue, Leon Medical Centers, and Nicklaus Children's Hospital.

Our Students Launch the Florida Medical Student Research Journal

The inaugural Florida Medical Student Research Journal (FMSRJ) was founded by two third-year medical students: Co-editors in Chief, Emily S. Andersen and Roy Lipworth. FMSRJ "allows students the unique opportunity to prepare for a future in academic medicine," and aims to "bridge the gap during those early years of medical students' careers when unfamiliarity with publishing and peer-review are most prevalent." There are just a handful of similar student initiatives across the country.

2016 Sapphire Celebration Gala raised over \$1 million

In celebration of the 10th anniversary of its founding, HWCOM held its third Sapphire Celebration Gala on Saturday, April 9, at the InterContinental Miami. The event brought together more than 500 of South Florida's medical, business, philanthropic, and civic leaders for an exclusive evening featuring a luxury silent auction, dinner, music, dancing, award presentation, and a drawing for a 2016 Red Corvette Stingray. The gala raised over \$1 million for student scholarships, medical education, and training programs.

Match Day

The Class of 2016 students matched into 17 different specialties in 26 states and the District of Columbia, and its 98% placement rate surpassed the national average of 95%.

More than half of the class (58%) is pursuing specialties in primary care where there is a critical shortage of physicians nationwide. A dozen of the recent graduates have chosen to remain in South Florida to care for our local population.

Graduation/Patient Receives Teaching Award

On Saturday, May 7, HWCOM awarded **108 medical degrees** as well as a medal to a patient who, despite having no medical training, is helping to teach medicine.

The Green Family Foundation Community Teaching Award was designed to recognize that the people who allow our students into their communities and homes to learn first-hand about the social determinants of health are in essence an extension of our instructional faculty. The inaugural award recipient is Manolina Sosa, one of the first household members recruited into the NeighborhoodHELP program.

Awards and Recognitions

John A. Rock, M.D. has been appointed to the Committee on Strengthening the Disaster Resilience of Academic Research Communities of the Health and Medicine Division of the National Academies of Sciences, Engineering, and Medicine.

Eneida O. Roldan, M.D., M.P.H., M.B.A. received the “Woman of The Year” award from the South Florida Hispanic Chamber of Commerce. The organization is comprised of dedicated professional individuals and business owners who have come together to advance the commercial, financial, educational, and civic interests of the ever-growing Hispanic Community of South Florida.

Class of 2020 – White Coat Ceremony

On Friday, August 5, HWCOM welcomed its eighth class – the Class of 2020 – at the annual White Coat Ceremony, a modern medical school ritual that officially sets students on the path to becoming physicians. As the name of the ceremony implies medical students get their first white coat, a shorter version of the long white coat they’ll receive when they graduate as doctors.

At 126 students, this is the college’s largest class to date. The Class of 2020 students was selected from a pool of more than 4,700 applicants. Of these 126 new Panthers, 83% are Florida residents and 27 of them are our own FIU graduates.



**Report to the Board of Trustees Health Affairs Committee
September 1, 2016**

The College sustains research leadership in South Florida and globally in health disparities and improving health equity, chronic diseases, health economics, healthy aging, and the population health consequences to environmental exposure. The following summarizes recent achievements.

Research

CRUSADA Postdoctoral Fellow Awarded NIH Grant

Mariano Kanamori, Ph.D. has received a National Institutes of Health Pathway to Independence Award in support of addressing substance use disorders and HIV risk among Latina seasonal workers. The objective of the NIH Pathway to Independence Award is to help an outstanding postdoctoral researcher like Kanamori complete needed, mentored training and transition in a timely manner to an independent, tenure-track or equivalent faculty position. This award is a first for FIU Stempel College. Kanamori is currently an NIH-funded post-doctoral research fellow at the FIU Center for Research on U.S. Latino HIV/AIDS and Drug Abuse at FIU (CRUSADA). Under the mentorship of Stempel College professors Mario De La Rosa and Mary Jo Trepka, Kanamori is receiving training on dyadic and social network analysis for Latino adolescent and adult individuals on topics related to substance abuse, HIV prevention and domestic violence.

Dr. Guilarte Building his Research Presence at FIU

Dr. Tomas Guilarte, Dean and Professor of Department of Environmental and Occupational Health, is PI of three multimillion dollar NIH/NIEHS grants to study biomarkers of neurotoxicity and environmental exposure of lead and other toxic metals. These grants involve studies on “Peripheral BDZ Receptor of Neurotoxicity” (2016-2018 \$0.8 M), “Presynaptic Mechanisms of Lead Neurotoxicity” (2016-2017 \$0.5 M), and “PB Grant: NMDA Receptor Function in Lead Neurotoxicity” for which the competitive renewal was recently funded (2016-2020 \$3 M). Dr. Guilarte submitted a competitive renewal to NIEHS on March 5, 2016 for the grant “Molecular and Behavioral Effects of Low Level Manganese Exposure” (2016-2020 \$5.1 M).

New Epidemiology Faculty Grants

Dr. Wasim Maziak, a world expert on tobacco control research and the evidence based fight against non-cigarette tobacco use, received a new NIH grant totaling \$1.3 M for 3 years to study “Understanding Tobacco Flavor Effects on Water Pipe Smokers;

Experiences and Exposures.” Dr. Maziak has been continuously funded by NIH since 2001.

Dr. Purnima Madhivanan directs collaborative studies funded by the NIH to investigate “Predictors of HPV Vaccination among Parents of Rural Adolescent Girls in India.” She resubmitted to the NIH a proposal (\$400K) for “Longitudinal Study of Vaginal Microbiota and Persistent Human Papillomavirus Detection” through the Fogarty Global Health Training Program, requesting funding for two postdoctoral fellows.

Homeless Research HIV/AIDS Research Commences

Dr. Marianna Baum, Dietetics and Nutrition, continues in her work to establish a downtown clinic and hiring staff to perform community-oriented research supported by an NIH (\$5.8 M) grant to study HIV/AIDS and Substance Abuse in Miami. The study will benefit the homeless population in Miami-Dade neighborhoods.

Faculty Awards / Recognitions

Madhivanan Wins Documentary Film Award

Dr. Purnima Madhivanan, Department of Epidemiology, won Every Footstep Counts Competition Award, which comes with a \$10,000 grant. Her foundation, the Public Health Research Institute of India, received one of the two Best Film Awards for its documentary “Change Makers” during the 21st International AIDS Conference held in Durban, South Africa, in July. The film shows how mobile antenatal care clinics increase access to care and HIV testing for India’s most vulnerable women.

Ibañez, De La Rosa, and Li Receive 2015 Best Paper Award

FIU Stempel College faculty members Gladys Ibañez, (Epidemiology) Mario De La Rosa, (Social Work) and Tan Li (Bio Statistics) were selected as the recipients of the 2015 *Journal of Ethnic & Cultural Diversity in Social Work* Best Paper Award. Their paper “Changes in Family Cohesion and Acculturative Stress among Recent Latino Immigrants,” earned them accolades from reviewers. The journal’s committee selected the top three papers from JECDSW Volume 24 which was reviewed and approved by the Editorial Board. The faculty members’ article received the highest ratings based on its conclusion that “for those Latino immigrants who struggle to adapt to their new host culture, family remains a source of support more so than for those who do not struggle as much.”

Cano Receives Award for Excellence in Research

Assistant Professor Miguel Ángel Cano, Department of Epidemiology, received the National Award of Excellence in Research by a New Investigator from the National Hispanic Science Network on Drug Abuse, one of the most prestigious Hispanic

scientific groups in the United States. This award is presented annually by NHSN to one new investigator for outstanding research and/or publication in the field of Hispanic drug abuse.

Students Awards / Recognitions

HPDP doctoral students recognized at 2016 FPHA Annual Education Conference

During the Florida Public Health Association 2016 Annual Education Conference, FIU Stempel College doctoral students Jessica Weissman, Chintan Bhatt and Ari Hozman were recognized for their scholarship while Health Promotion & Disease Prevention professor H. Virginia McCoy was invited to serve as the FIU Stempel College liaison to FHPA's board of directors. Weissman won the graduate student scholarship and presidential awards, and she was also selected for the position of student representative to the membership committee of the FPHA. Bhatt won the most informative poster award. He was also selected for the position of student representative to the legislative committee of the FPHA.

The FPHA serves Florida's public health professionals and students through advocacy, professional development as well as networking to improve Florida's health. FPHA membership is as diverse as public health and includes nurses, environmental health specialists, health educators, physicians, allied health professionals, preventive medicine specialists, laboratorians, alternative health care providers, social workers, academicians, policymakers, interested citizens, and students.

Community Events

Successful 2016 Path Awards

The Path Awards Luncheon is the premier event of the Robert Stempel College of Public Health & Social Work. Since 2006, the Path Awards have recognized community partners and exemplary professionals in dietetics, public health and social work. The event includes a luncheon and awards ceremony designed to bring together community partners, leaders, faculty, staff and students to celebrate the Colleges work to promote health, safety and wellbeing in South Florida. This year's event doubled its scholarship collections from 2015 to reach a total of over \$44K.

This page intentionally left blank



Report to the FIU Board of Trustees Health Affairs Committee
September 2016

Nicole Wertheim College of Nursing and Health Sciences Awarded \$70,000 to Fund Doctoral Nursing Students

Florida International University's Nicole Wertheim College of Nursing and Health Sciences (FIU-NWCNHS) received a new grant of \$70,000 from the Jonas Center for Nursing and Veterans Healthcare (Jonas Center), which will fund the scholarships of six (6) doctoral nursing students in 2016.

As a recipient of the Jonas Center grant, FIU-NWCNHS is part of a national effort to stem the faculty shortage and prepare the next generation of nurses - critical as a clinical nurse shortage is anticipated just as an aging population requires care. The FIU-NWCNHS Jonas Scholars joined more than 1,000 future nurse educators and leaders at 140 universities across all 50 states supported by Jonas Center programs, the Jonas Nurse Leaders Scholars Program, and Jonas Veterans Healthcare Program (JVHP). These scholarships support nurses pursuing PhDs and DNPs, the terminal degrees in the field.

The scholarships provided through the Foundation will relieve some of the financial burdens of students within the graduate programs, as well as, aide the FIU-NWCNHS in attaining its strategic goal of increasing student grant support by 25% in an effort to financially support students who aspire to change lives through caring at the bedside, leading in the classroom and the community, and by discovering healthcare solutions through research.

Awards Recognition

On July 23, 2016, Dr. Ora Strickland, Dean of Nicole Wertheim College of Nursing and Health Sciences, was inducted in the Sigma Theta Tau International Nurse Researcher Hall of Fame during the 27th International Nursing Research Congress in Cape Town, South Africa. Dr. Strickland was evaluated by the organization in the following areas:

1. Integrated scholarship in the researcher's area of specialty or interprofessional practice and a significant and sustained level of achievement in nursing research,

which has had national and/or international impact on the profession, patients, families, community, or policy.

2. A distinguished record of publications in nursing and non-nursing peer-reviewed journals (first-authored and co-authored and presentations).
3. Demonstration of external funding, university funding, or unique organizational support with justified unique context of funding.
4. Evidence of mentorship of novice researchers with demonstrated scholarly outputs. Evidence includes but is not limited to number of mentees (masters, PhD, novice, and clinical researchers).
5. The researcher's program of research has a measurable impact on policy and/or has promoted quality and value to service delivery. In addition, the research should demonstrate translation of evidence to practice.

The mission of the Honor Society of Nursing, Sigma Theta Tau International, is to advance world health and celebrate nursing excellence in scholarship, leadership, and service. Dr. Strickland was recognized as a nurse researcher who has achieved significant and sustained broad national and/or international recognition for her work; and whose research has impacted the profession and the people it serves.

Physical Therapy Program

The Foundation for Physical Therapy recognized Florida International University's PT Program with the Most Successful PT Newcomer Award for the 2015-2016 Pittsburgh-Marquette Challenge. This award was given to the first-time participating PT school that raised the most funds for the Marquette Challenge.

Physical therapist and physical therapist assistant students from across the country were recognized for their fundraising efforts through the 2015-2016 Pittsburgh-Marquette Challenge at APTA's NEXT Conference and Exposition in Nashville, TN on June 9th. Top fundraising schools were announced during the *Challenge*

Awards Luncheon co-hosted by Marquette University and sponsored by Patterson Medical. Students also received recognition during the *Foundation's 2016 Gala*. Students from 150 schools raised a record \$354,320 to support physical therapy research.



The Challenge is the largest annual student-driven fundraising effort for the Foundation for Physical Therapy. The money raised by PT and PTA students helps fund scholarships and grants that advance patient care. Additionally, the Challenge supports the rigorous scientific review process for all Foundation grants and scholarships. Since its inception in 1989, 264 schools have participated in raising **over \$3.3 million** for physical therapy research.

Alumni Spotlight

The Kansas City Chiefs recently hired Tiffany Morton as their newest athletic trainer, the team's first female to fill this role. Morton is from Miami, Fla., where she completed the Athletic Training Program (AT) at the FIU-NWCNHS.

The National Athletic Trainers Association said that in recent years it has seen a significant rise in the percentage of female members in the male-dominated organization. As a trailblazer, Morton is leading the way, however, the public should expect to see more women trainers working with professional and college teams. FIU-NWCNHS administration, faculty and staff work diligently to ensure all of its programs provide an aggregate of courses and field experiences that enriches its students overall academic experiences. The AT program has demonstrated that with great precedence of a rigorous curriculum, its students can and will continue to blaze trails in practice and research within their respective fields.

This page intentionally left blank

**STATE UNIVERSITY SYSTEM OF FLORIDA
BOARD OF GOVERNORS
Health Initiatives Committee
June 23, 2016**

SUBJECT: Minutes of January 21, 2016 Committee Meeting and February 11, 2016
Committee Workshop

PROPOSED COMMITTEE ACTION

Approval of the minutes of the following two meetings:

- Committee Meeting held on January 21, 2016, at Florida State University
- Committee Workshop held on February 11, 2016, at the University of South Florida

AUTHORITY FOR BOARD OF GOVERNORS ACTION

Article IX, Section 7, Florida Constitution

BACKGROUND INFORMATION

Committee members will review and approve the minutes of the meetings held on January 21, 2016, and February 11, 2016.

Supporting Documentation Included: Minutes, January 21, 2016
Minutes, February 11, 2016

Facilitators/Presenters: Governor Ed Morton

MINUTES
STATE UNIVERSITY SYSTEM OF FLORIDA
BOARD OF GOVERNORS
HEALTH INITIATIVES COMMITTEE
FLORIDA STATE UNIVERSITY
TALLAHASSEE, FLORIDA
JANUARY 21, 2016

*Video or audio archives of the meetings of the Board of Governors
and its Committees are accessible at <http://www.flbog.edu>*

1. Call to Order

Chair Ed Morton convened the meeting at 11:07 a.m. on January 21, 2016 with the following members present and answering roll call: Governor Beard, Governor Doyle, Governor Levine, and Governor Valverde. Governor Morton gave a general introduction to the draft Strategic Plan for Health and the need for the Committee's feedback during the meeting. He discussed how the Committee's work fit with wider conversations about ensuring that the state university graduates have degrees that align with employer needs, particularly within the health care sector.

2. Meeting Minutes

Governor Valverde moved that the Committee approve the minutes of the September 2, 2015 meeting, as presented. Governor Doyle seconded the motion and members concurred.

3. Update on the Health Initiatives Strategic Plan

Ms. Amy Beaven, Director of STEM and Health Initiatives with the Board of Governors office, presented an update on the Strategic Planning process, including the identification of short-term and long-term priorities from the Committee's environmental scan findings and discussions with key constituency groups in each of the goal areas. She then discussed the goals, priorities, and strategies in the Committee's draft Strategic Plan.

Ms. Beaven presented the first goal of meeting the health workforce needs in Florida and identified two priority areas (the need for more physician residencies and the need for more nursing faculty) and three strategies. She then presented the second goal of increasing the competitiveness of health-related research across the State University System. Three health-related research priorities have been identified in the near-term: to

build data-sharing and “big data” infrastructure, to invest in strategic research facilities, and to incentivize research collaboration and commercialization. Ms. Beaven welcomed any questions or direction from the Committee on the goals and priorities in the draft. She noted that the Committee would have a February workshop to gather additional information on specific actions and estimated costs associated with the Strategic Plan strategies from system experts and members of the Health Initiatives Advisory Group.

After the presentation, several members made comments about the quantity and quality of graduate medical education (GME) in Florida. Governors Valverde, Levine, and Morton each emphasized the need for additional residency positions to strategically fill current gaps. Governor Valverde noted that in Florida 55% of doctors are over age 50 and only 10% are under 35, making a doctor shortage very likely in the future. He noted the annual cost of a residency position is between \$80,000 and \$100,000. When the Centers for Medicare & Medicaid Services funded graduate medical education more readily, these programs were attractive to hospitals. Limited federal funding means that hospitals have less incentives to create new GME programs. Other entities, such as the SUS institutions, will need to play a more active role in establishing the GME programs needed to meet the state’s needs. Any request for state funding should target unmet demand for specific physician specialties and regions of the state.

Governors Tripp and Frost discussed the quality of residencies, their competitiveness, and the ability to retain and/or attract top medical school graduates for Florida residency programs. Governor Levine noted that residency programs will have to meet quality standards to be accredited and the greater issue is identifying where Florida needs new or expanded programs and matching resources to those needs. He noted that enhancing research would build quality as well. He then motioned for the Committee to approve the Strategic Plan for Health as presented. Governor Doyle seconded the motion and the Committee voted for approval.

4. Closing Remarks and Adjournment

Chair Morton closed the meeting by suggesting that Florida can have the best in health care and research if there are bold goals, a shared vision, and commitment of resources to achieve them. He adjourned the meeting at 11:34 a.m.

Ed Morton, Chair

Amy Beaven,
Director, STEM and Health Initiatives

MINUTES
STATE UNIVERSITY SYSTEM OF FLORIDA
BOARD OF GOVERNORS
HEALTH INITIATIVES COMMITTEE
UNIVERSITY OF SOUTH FLORIDA
TAMPA, FLORIDA
FEBRUARY 11, 2016

*Video or audio archives of the meetings of the Board of Governors
and its Committees are accessible at <http://www.flbog.edu>*

1. Call to Order

Chair Ed Morton convened the meeting at 1:00 p.m. on February 11, 2016, with the following members present and answering roll call: Governor Beard, Governor Valverde, and Governor Robinson (by phone). Also participating in the workshop from the Health Initiatives Advisory Committee were Celeste Philip from the Department of Health, John Mines from the Florida Hospital Association (substituting for Bruce Rueben), Mary Lou Brunell from the Florida Center for Nursing, and Andres Gil from the SUS Vice Presidents for Research. Amy Beaven, Christy England-Siegerdt, and Vikki Shirley were present as staff of the Board of Governors.

Governor Morton opened by stating that the purpose of the workshop was to ask questions and to get ideas on strategies that advance the goals set out in the Health Strategic Plan. He emphasized the importance of the Committee's efforts in looking at gaps in the health workforce and the healthcare sector's large contribution to jobs, economic development, and cutting-edge research in Florida.

2. Review Strategic Plan for Health

Ms. Beaven gave a brief history on the Committee's environmental scan process, noting that the Committee took a System-wide look at Florida's health workforce, healthcare delivery, and health-related research and drew comparisons to national trends. The findings from the environmental scan were used to inform a Health Strategic Plan with two goals and five priorities. The focus of the presentations for the workshop would be two potential grant programs to advance the first goal of meeting the workforce needs of Florida, and one grant program to advance the second goal of increasing the competitiveness of health-related research for the System. Each of the initial strategies were chosen among the strategic plan priorities because they are actionable within the next year and could be potentially supported through grant funding similar to the Board's successful TEAm grant model.

3. Critical Area: Physician Residencies

Ms. Beaven introduced Dean Michael Good from the University of Florida's College of Medicine as the first presenter. Dr. Good noted that he was speaking on behalf of the Council of Florida Medical School Deans as he presented a background on graduate medical education (GME) for Florida and made recommendations for a competitive grant program for GME expansion.

Dean Good's presentation addressed the critical role that GME plays in educating the physician workforce. He noted the fundamental problem of not having enough residency positions in the state to ensure that there will be enough physicians to meet near-term health needs in Florida. Without an expansion of medical residency positions, the state will fall further behind in the training and recruitment of physicians. He estimated that Florida needs to create between 500-800 new first-year positions to keep up with the pace of growth in the medical schools and approximately 3,400 overall residency slots (representing multiple years of the 3-6 year residencies) to bring Florida up to the national average for number of residents per 100,000 population. Based on growth in Florida's population and the unique demographics of the state, just coming up to the national average may be a conservative measure of the need.

Dean Good addressed several issues: the long pipeline of education and training for a physician, medical school growth in recent years, physician retention trends for those educated in Florida, funding trends for GME (sources and shares of the funding), costs of GME to institutional providers and sponsors, and recent initiatives to expand GME in Florida. He noted that Florida currently has 51 sponsors for 161 residency programs, with roughly 54% of the 3,800 current residency positions sponsored by an SUS medical school.

Dean Good noted the attractiveness of a competitive grant program to fund innovative strategies to start-up and/or expand residency programs around the state. The nine medical schools in Florida are already a source of leadership and coordination for GME programs and a dedicated funding source for that work could directly increase GME in the state. He emphasized the need for plans that would maintain the financial stability of the programs after the grant period ends. He suggested a role for the Physician Workforce Advisory Group in establishing where GME data collection and coordination happens in the state. He concluded that Florida has about 3,800 residents currently in training and needs another 3,400 just to come up to the national average based on population.

Governor Valverde calculated the cost for an additional 3,400 positions to be about \$350 million dollars and noted that, even with recent state efforts, Florida is far under budget to achieve this number of positions. He questioned whether savings from Medicaid's transition to managed care could be re-directed from the state's general fund back to the

Agency for Healthcare Administration (AHCA) for GME. However, John Mines with the Florida Hospital Association suggested that the state has not actually realized the projected savings and the actual costs of managed care have been higher than anticipated, leaving no recoverable funds for GME.

Governor Beard noted that an appropriate first goal may be the creation of 500 first year positions to mirror the recent growth in the number of medical school graduates. Dean Good explained that the 500 post-graduate year one (PGY-1) positions would be a start but there would need to be funding for each year of the 3-6 year residency programs, essentially multiplying the number of first year positions by the length of the program to get to the full program capacity figures.

Governor Morton expressed the need to get people's attention on the consequences and economic impact of not having an adequate supply of physicians. He asked about making the economic case for expanding GME and being able to tell the story of the return on investment of expansion and the costs to the state and to quality of care if we don't expand it. There was conversation about comparing patient outcomes in Florida to other states that have more medical residents and physicians on a per population basis. The group discussed Robert Wood Johnson county health rankings and Dartmouth Atlas as data sources, and the need to include socioeconomic status (SES) in the consideration of health outcomes (medical care only contributes about 20% to health outcomes). Celeste Philip noted current funding opportunities through Centers for Medicare & Medicaid Services to gauge how clinical systems impact SES determinants of health.

4. Critical Area: Nurse Faculty Pipeline

Ms. Beaven introduced Dean Dianne Morrison-Beedy from the University of South Florida's College of Nursing to provide a presentation on nursing faculty shortages. Dr. Morrison-Beedy noted that she was presenting on successful innovations based on input from all of the SUS nursing school deans and directors. She also stated that any or all of the strategies could be funded by a grant in the short-term. She described the national shortage of nursing faculty as a big challenge and said any plans for the SUS would need to be bold in decision-making, intentional in its strategies, and genuine in what's best for residents of Florida. She noted an increase in the demand for nurses with advanced education, such as the Bachelor of Science in Nursing (BSN); recent increases in employer vacancies for RNs; preference in hiring nurses with a BSN; high student demand for SUS nursing programs; and better patient outcomes linked to the higher education of nurses. High quality nurses are coming out of the SUS programs.

There was discussion on the number of nurses graduating from SUS programs compared to other sectors of education in Florida. Mary Lou Brunell from the Florida Center for Nursing noted that when one considers both ASN and BSN programs, the

SUS is graduating 10-15% of Florida's registered nursing graduates. She also noted that there has not been a significant increase in the number of pre-licensure BSN nursing graduates recently, whereas there have been large increases of ASN and RN-BSN graduates. Dean Morrison-Beedy noted that expansion in the SUS is constrained by the number of faculty.

Dean Morrison-Beedy demonstrated the exponential impact between one educator, the 12,000 students he/she trains, and the 23 million patients the students in turn care for over a 40-year faculty career. She then described the high number of faculty due to retire soon; the burdensome professional requirements (especially for maintaining the nursing license); and the rigors of balancing research, clinical assessments of students, classroom teaching loads, and clinical practice. She noted that most nurses do not choose to teach because the compensation and workload for nursing faculty is not as appealing as private sector practice. The pipeline of PhD students is also not adequate to meet future faculty vacancies. Dr. Morrison-Beedy then described several short-term innovations that could target recruitment and retention of nursing faculty. She described USF's successful INFORM program and noted that either the entire program or selected components could be implemented by the other SUS nursing programs.

Governor Morton expressed the need for strategic direction in increasing the number of nurses coming out of the SUS BSN programs. He asked whether expanding these programs and securing the resources to do so was seen as a priority by the institutions and by the System. He stressed that the System needs to look at faculty salaries in addition to qualitative elements. Ms. Beaven noted that the focus of the workshop was short-term elements that could be funded with a grant program and that the nursing deans had also offered written recommendations on long-term strategies, including salary issues.

Ms. Brunell suggested that the institutions and Committee consider the mix of faculty required to teach in the BSN programs versus the graduate programs. She noted there is a need to educate PhD students to teach in the graduate programs but she asked how many faculty, and at what level, would be needed to double the number of BSN graduates. The salary differences may not be as large between early-career private practice and teaching if administrators are able to hire younger, junior faculty. She noted the faculty recruitment and retention strategies may be different depending on the end goals and the programs that need to be expanded. Governor Robinson noted tuition waivers for SUS employees as one strategy to support the training of future faculty.

Governor Morton concluded that expanding the nursing program capacity in the SUS is a priority and we need the experts to take on the long-term strategies to fix the problem. Governor Valverde asked why so many students choose private nursing programs and Dr. Morrison-Beedy noted that the SUS programs are limited access programs. Many of

those students would choose the SUS schools if there was infrastructure and resources to expand capacity.

5. Critical Area: Building Upon Federal SBIR/STTR Awards

Ms. Beaven introduced Dr. MJ Soileau, Vice President for Research and Commercialization at the University of Central Florida to present a matching grant program for federal SBIR/STTR awards. He noted that with state funds for a matching grant program the SUS would be able to enhance research, increase collaboration between Florida industry and university research, promote “born here, grow here” companies, provide opportunities to students, and build from a proven model.

Dr. Soileau described the federal SBIR/STTR program and noted that 3% of federal agency budgets are set aside to fund small business innovation grants under this program. He described the current Florida High Tech Corridor program, which matches federal SBIR/STTR awards for businesses partnering with UCF, USF and UF. In some cases, the businesses that apply for the federal awards are members of the universities’ business incubator programs. The SBIR/STTR award is a means for Florida companies to tap into early stage capital. The matching program is a way to encourage small businesses to partner with and pay SUS researchers for their expertise and use of specialized equipment. In turn, a company is more likely to be successful because it does not have to fully fund its own research and development (R&D) at such an early business stage.

Dr. Soileau noted that a Phase I award for Proof of Concept is for 6-12 months and is not a lot of money (up to \$150K), but is a way to get started. The Phase II awards are for a full R&D effort and provide up to \$1M which is attractive, especially if matched. Phase III is the commercialization stage and has no federal funds. Dr. Soileau noted that through the Florida High Tech Corridor Program, UCF has seen an increase in faculty and student engagement with private companies and significant multipliers of economic impact from the original investment. He noted that other states have matching programs and Florida currently gets about half of what other successful states with matching programs are getting from the NIH SBIR/STTR program.

He then discussed ideas for pairing research expertise across the System using available data and data mining software. For health-related research there could be benefit to connecting medical faculty with other researchers in the university(s) through the posting/advertisement for a needed expertise or specific technology challenge.

Governor Morton asked if the multiplier effect from matching the SBIR/STTR awards is well understood by the local economic development groups around the state. He also asked if more SUS institutions should be going after SBIR/STTR funds. Dr. Soileau confirmed that the economic development groups have made some efforts to bring in

this federal money and our universities currently work with those groups to do more. Dr. Good noted that the multiplier effect of these funds hasn't always been well understood, but for good research teams there are multiples of \$4-11 for every dollar invested. Dr. Gil suggested a growing awareness and growing need to partner with industry in light of the shrinking federal budget for research. He said FIU has increased its efforts through the incubator program to go after SBIR/STTR awards and to increase technology transfer. He also noted that the program is a good way to maximize a university's core facilities, by allowing companies to pay for use of the specialized equipment.

Governor Morton and Governor Valverde thought expanding the Florida High Tech Corridor model to more SUS schools through a state matching grant program was a good strategy.

6. Closing Remarks and Adjournment

Governor Beard suggested the Committee set goals for each of the topics presented in the workshop. Chair Morton agreed and adjourned the meeting at 4:00 p.m.

Ed Morton, Chair

Amy Beaven,
Director, STEM and Health Initiatives

STATE UNIVERSITY SYSTEM OF FLORIDA
BOARD OF GOVERNORS
Health Initiatives Committee
June 23, 2016

SUBJECT: Update on Strategic Plan Priorities: Request for Proposals and LBR Process

PROPOSED COMMITTEE ACTION

For information

AUTHORITY FOR BOARD OF GOVERNORS ACTION

Article IX, Section 7, Florida Constitution

BACKGROUND INFORMATION

Earlier this year, the Health Initiatives Committee approved a Health Strategic Plan that includes goals, priorities, and strategies to meet the most pressing needs identified in the Committee's environmental scan. The Committee also convened a workshop in February to gather additional information on specific actions and estimated costs associated with the Strategic Plan strategies. At the workshop, the Committee heard presentations from Dr. Michael Good representing the Council of Florida Medical School Deans, Dr. Dianne Morrison-Beedy representing the SUS Nursing School Deans and Directors, and Dr. M.J. Soileau representing the SUS Vice Presidents for Research.

The Committee will receive an update on three proposed grant programs that align with the workforce and research goals of the Health Strategic Plan. Staff will note the progress in developing three requests for proposals (RFPs) in the following priority areas: expansion of graduate medical education, nursing faculty recruitment and retention, and SBIR/STTR matching grants for health-related research. The Committee will discuss the timeline and budget necessary to make a 2017 legislative budget request to fund the proposed grant programs.

Supporting Documentation Included: None

Facilitators/Presenters: Dr. Christy England-Siegerdt



BOARD *of* GOVERNORS

State University System of Florida

Update on Health Strategic Plan Implementation

Dr. Christy England-Siegerdt, Associate Vice Chancellor
Academic & Student Affairs
June 23, 2016



Background and Purpose

To receive an update on two proposed programs that support the workforce goals of the Health Strategic Plan.



Strategic Planning Process

Timeline	Tasks
2014-2015	Committee's Environmental Scan
January Board Meeting	Committee Approved the Health Strategic Plan
February Committee Workshop	Presentations from Representatives of the Medical and Nursing School Deans, VPs for Research
March Board Meeting	Full Board Approved the Health Strategic Plan
March-June	Drafted Program Framework with Medical and Nursing School Deans



Goal 1: Meet the Health Workforce Needs of Florida

**Priority 1.1:
Expand the number of physician
residency slots to address physician
pipeline and shortage issues.**



GME Expansion Program Overview

Strategies will increase the number of residency positions in critical areas of documented need, such as:

- physician specialties in need,
- geographic areas in need,
- care for underserved populations, or
- novel training sites in response to changing health care delivery systems.



GME Expansion Program Overview

Funding Amount and Period

One-time funding provided during the 2017-2018 academic year, with performance monitored for 6 years.

# of First-year Residents	Cost for Start-Up / Expansion	# Residents at Full Capacity
800	\$80 million	3,200
500	\$50 million	2,000



GME Expansion Program Overview

Project Activities

Those directly related to the start-up or expansion of a residency program to meet a critical need.

Review Criteria and Performance Metrics

- Number of New Residency Positions
- Demonstration of Need
- Plans for Sustainable Funding
- Innovative Training



Goal 1:

Meet the Health Workforce Needs of Florida

Priority 1.2:
Create or expand programs to meet the demand for nursing graduates.



Nursing Faculty Incentive Program Overview

Strategies to increase nursing program capacity by recruiting and retaining SUS nursing faculty.



Nursing Faculty Incentive Program Overview

Funding Amount and Period

One-time funding of \$15 million during the 2017-2018 academic year, with performance monitored for 6 years.



Nursing Faculty Incentive Program Overview

Eligible activities

Those directly related to the recruitment or retention of nursing faculty.

Review Criteria and Performance Metrics

- Number of New Faculty Hired
- Number of Faculty Retained (compared to the retention of non-participants)
- Increased Nursing Program Capacity
- Plans for Sustainable Funding
- Additional University Support for Salaries



Next Steps

- Develop Legislative Budget Requests (July-August)
- Support the LBRs during session
- Implement the programs in academic year 2017-2018



BOARD *of* GOVERNORS

State University System of Florida

www.flbog.edu