

THE FLORIDA INTERNATIONAL UNIVERSITY
BOARD OF TRUSTEES
ACADEMIC POLICY & STUDENT AFFAIRS COMMITTEE

THURSDAY, 15 FEBRUARY 2007

11:30 AM

FLORIDA INTERNATIONAL UNIVERSITY
GRAHAM CENTER CONFERENCE ROOM 243
UNIVERSITY PARK CAMPUS
MIAMI, FLORIDA

MEMBERSHIP

PATRICIA FROST, *CHAIR*

BETSY ATKINS, *VICE CHAIR*

ARMANDO GUERRA

BRUCE HAUPTLI

ALFONSO LEON

NOEL GUILLAMA-ALVAREZ, *FOUNDATION BOARD OF DIRECTORS*

AGENDA

- | | |
|--|--------------------------------|
| I. CALL TO ORDER | PATRICIA FROST |
| II. APPROVAL OF MINUTES | PATRICIA FROST |
| III. CHAIR'S REMARKS | PATRICIA FROST |
| IV. ITEMS FOR COMMITTEE REVIEW | |
| ▪ REPORTS (<i>NO ACTION REQUIRED</i>) | |
| 1. STUDENT AFFAIRS REPORTS | |
| A. STUDENT AFFAIRS | ROSA JONES |
| B. VOLUNTEER SERVICES REPORT | ROSA JONES |
| C. TERRORISM PREPAREDNESS REPORT | ROSA JONES |
| D. CAREER SERVICES REPORT | ROSA JONES |
| 2. ACADEMIC AFFAIRS REPORTS | |
| A. HONORS COLLEGE | LESLEY NORTHUP |
| B. GRADUATE EDUCATION | GEORGE WALKER |
| C. IMPLEMENTATION OF CLASS UTILIZATION
INITIATIVE | RONALD BERKMAN
CORINNE WEBB |
| D. UNDERGRADUATE REPORT | CORINNE WEBB |

V. OTHER BUSINESS *(IF ANY)*

PATRICIA FROST

VI. ADJOURNMENT

PATRICIA FROST

NEXT ACADEMIC POLICY AND STUDENT AFFAIRS COMMITTEE MEETING
IS SCHEDULED FOR
19 APRIL 2007

**THE FLORIDA INTERNATIONAL UNIVERSITY
BOARD OF TRUSTEES
ACADEMIC POLICY AND STUDENT AFFAIRS COMMITTEE**

15 FEBRUARY 2007

**SUBJECT: ACADEMIC POLICY AND STUDENT AFFAIRS COMMITTEE MEETING
MINUTES, 4 DECEMBER 2006**

PROPOSED COMMITTEE ACTION:

Adopt the following Resolution:

RESOLVED that the minutes of the meeting of the Florida International University Board of Trustees' Academic Policy and Student Affairs Committee held on 4 December 2006, attached to this Resolution as Exhibit "A," are hereby approved.

EXHIBITS/SUPPORTING DOCUMENTS:

- EXHIBIT "A": 4 DECEMBER 2006
ACADEMIC POLICY AND STUDENT
AFFAIRS COMMITTEE MEETING MINUTES.

FACILITATOR/PRESENTER:

- COMMITTEE CHAIR PATRICIA FROST

This page intentionally left blank

DRAFT

**THE FLORIDA INTERNATIONAL UNIVERSITY
BOARD OF TRUSTEES**



**ACADEMIC POLICY AND STUDENT AFFAIRS COMMITTEE
MINUTES
4 DECEMBER 2006**

I. Call to Order

The Florida International University Board of Trustees Academic Policy and Student Affairs Committee meeting was called to order by Committee Vice Chair Betsy Atkins on Monday, 4 December 2006, at 11:38 am, in the University Park Graham Center Conference Room 243, Miami, Florida.

The following attendance was recorded:

Present:

Betsy Atkins, *Vice Chair*
Armando Guerra
Bruce Hauptli
Alfonso Leon

II. Approval of Minutes

Committee Vice Chair Betsy Atkins asked if there were any additions or corrections to the minutes of the 28 September 2006, Academic Policy and Student Affairs Committee meeting. Hearing none, the Committee adopted the following:

RESOLVED that the minutes of the meeting of the Florida International University Board of Trustees' Academic Policy and Student Affairs Committee held on 28 September 2006, attached to this Resolution as Exhibit "A," are hereby approved.

III. Chair's Remarks

Committee Vice Chair Betsy Atkins welcomed all present to the meeting and thanked each Trustee for his/her work on behalf of the University.

Committee Vice Chair Atkins reported on University accomplishments, including the University's Executive MBA (EMBA) program and the First Generation Matching Grant Program.

Committee Vice Chair Atkins noted that Executive Vice President and Provost Ronald Berkman with the recommendation of the Faculty Senate adopted the report of the Classroom Space Utilization Committee, including the implementation of a 5-day class schedule. On behalf of the Academic Policy and Student Affairs Committee, she congratulated the Faculty Senate for responding to the need for enhanced utilization of space.

IV. Items for Committee Review

A. Action Items

1. Honorary Degree Recipient

Executive VP and Provost Berkman presented the Honorary Degree Recipient for Committee review, noting that the recommendation consisted of one (1) candidate to receive a doctoral degree from the University.

After discussion, the Committee recommended the Board adopt the following Resolution:

RESOLVED that the Florida International University Board of Trustees endorses Jody Williams as recipient of a doctoral degree *honoris causa* from Florida International University and whose academic and professional profile is attached to the Resolution as Exhibit "B".

Trustee Guerra inquired as to how a candidate for a doctoral degree came to the attention of the Faculty Senate. Trustee Hauptli provided a brief summary of the processes involved in the selection of a doctoral degree candidate.

B. Reports

2A. Student Affairs Report

Vice President Rosa Jones presented the Division of Student Affairs Summary Report to the Committee. She reported on the University's Disability Resource Center and on the approval and funding for ENLACE (Engaging Latino Communities for Education)

Trustee Guerra inquired as to the number of University students with disabilities. VP Jones noted that there were currently a little more than 1,200 students who identified themselves as having a disability.

2B. Student Health Services Report

Executive Director of the University's Health Service Robert Dollinger presented the Student Health Services Report. He reported on the wide range of health services available to the University's students, noting current usage levels and client demographics.

3. Academics Affairs Reports

A. College of Medicine Update

Executive VP and Provost Berkman presented the College of Medicine Update, noting that newly appointed founding dean of the University's College of Medicine John A. Rock, M.D. would be joining the University community in January 2007.

B. World Class Scholars and Centers of Excellence

Executive Vice Provost Doug Wartzok reported that in 2006 the Legislature established two programs to stimulate high technology research and development in Florida through investment in public and private universities. He added that \$20 million was dedicated to attracting World Class Scholars in SMET (Science, Mathematics, Engineering or Technology) to State institutions, noting that the University submitted two proposals; both from the College of Engineering and Computing, and both were awarded. EVP Wartzok reported on the second established program which would create Centers of Excellence, noting that unfortunately, neither of the University's Center of Excellence submissions were funded.

C. New Directions in Research and Graduate Education

Vice President for Research and Dean of the University Graduate School George Walker presented the New Directions in Research and Graduate Education report, noting that to evolve as a research university, to meet future opportunities and challenges, it was particularly crucial to focus on the areas of research and graduate education.

D. Undergraduate Report

Vice President for Enrollment Services Corinne Webb presented the Undergraduate Report, noting that as of November 3, 2006 there were 38,442 students enrolled at the University, which represented a 3.0% increase in headcount enrollment over last year's enrollment. She also reported that the University was prepared to award over \$1.6M in Scholarship aid to approximately 2,900 undergraduates who currently qualified for the new First Generation Matching Scholarship Program. She also presented the BOG/BOT Performance Accountability Quarterly Report.

V. Other Business

No other business was raised.

VI. Adjournment

With no other business, Committee Vice Chair Atkins adjourned the meeting at 1:13 p.m.

Exhibit "A"

FIU Board of Trustees'
Academic Policy and Student Affairs Committee Minutes
4 December 2006
Page 4

DRAFT

Trustee Requests

1. *Committee Vice Chair Atkins requested that an analysis of University services centered around student career assistance, such as resume building, self-marketing tools and interviewing strategies be included as part of the Student Affairs Report. (VP Jones will coordinate.)*

Attached: Exhibit "A" & "B"

*MEB/mb
12.20.06*

**THE FLORIDA INTERNATIONAL UNIVERSITY
BOARD OF TRUSTEES
ACADEMIC POLICY AND STUDENT AFFAIRS COMMITTEE**

15 FEBRUARY 2007

SUBJECT: STUDENT AFFAIRS REPORTS

PROPOSED COMMITTEE ACTION:

None. Discussion Item.

REPORTS

- A. STUDENT AFFAIRS – ROSA JONES
- B. VOLUNTEER SERVICES REPORT – ROSA JONES
- C. TERRORISM PREPAREDNESS REPORT – ROSA JONES
- D. CAREER SERVICES REPORT – ROSA JONES

EXHIBITS/SUPPORTING DOCUMENTS:

- DIVISION OF STUDENT AFFAIRS REPORT,
JANUARY 2007

FACILITATOR/PRESENTER:

- ROSA JONES

This page intentionally left blank

**Florida International University
Board of Trustees
Academic Policy and Student Affairs Committee
Division of Student Affairs – Summary Report
January 2007**

INTRODUCTION

The fall semester ended smoothly as students scattered from the campus in search of much needed rest and relaxation, and time for holiday celebrations ushering in 2007. The first week of classes began with great anticipation of an exciting spring semester. The opening program of the new semester was the 16th Annual Rev. Dr. Martin Luther King Commemorative Celebration Breakfast held January 12, 2007. This report will highlight the beginning of the spring semester with a focus on this Student Affairs signature program, in addition to identifying several programs scheduled for the spring semester accompanied by an update of construction projects and University Housing occupancy.

The MLK Commemorative Breakfast is a Student Affairs program that draws campus-wide support with a committee that includes faculty, students and staff. The committee was fortunate to attract Dr. Julian Bond as the keynote speaker for the MLK Breakfast. The program has expanded to include several events during the course of the week, leading to the main event. Community participation continues to be a centerpiece of the program. This year's theme, *A Testament of Hope: Chaos or Community*, was most appropriate for the occasion.

SPECIAL PROGRAMS – Dr. Martin Luther King, Jr. Commemorative Celebration Breakfast

- **The MLK Essay** contest attracted high school seniors from both Miami-Dade and Broward counties. The three recipients each received tuition scholarships to attend FIU, \$1000 awards from Aramark and a \$500 book award from the University Bookstore. The recipients were: First place, Rivca Dubuisson, Miami School of the Arts, second place, Jazmin Jones, Miami Central High School and Donshay L. Brown, third place from Miami Carol City Senior High School.

Other awards: the Peace Award was given to Harold Silva, an FIU student who most exemplifies the ideals of the late Dr. King through community service. Dr. Lisa D. Delpit, Executive Director/Eminent Scholar for the Center for Urban Education was the recipient of the **Service Award**.

- **The 7th Annual MLK Youth Forum and Peace Walk** was held at the Biscayne Bay Campus on Tuesday, January 9. The keynote speaker was Barrington Irving, a senior at Florida Memorial University. At the age of 23, he has his pilot's license and is preparing to take a solo trip around the world.

- Also on Tuesday, in conjunction with the College of Law, a motivational speaker, Kemba Smith, a law student from Howard University spoke and participated in a discussion on mandatory sentencing for drug convictions with three FIU law professors.
- **The University Counseling Center** and SPC presented a movie and discussion on “Lackawanna Blues” on Wednesday.
- **The MLK awards reception** was held on Thursday evening to honor all the award recipients and to highlight the program sponsors. The corporate sponsors of the MLK Breakfast included Aramark, Inc, Burger King, GMAC/Saturn of Miami, GEICO and the University Credit Union.
- **The week of events culminated** with the MLK Commemorative Breakfast on Friday morning with Dr. Julian Bond as the main speaker.

STUDENT PROGRAMS FOR SPRING 2007

- **Service Learning courses** – The Center on Leadership and services has scheduled 27 courses for spring semester
- **Fourth Annual Leadership Summit** - February 2 at the Biscayne Bay Campus
- **Relay for Life** – February 9-10 in the Football Stadium
- **Women Who Lead** – February 20, Guest speaker: Patricia Ireland, former president of NOW
- **Tenth Annual Dance Marathon** – March 3 & 4
- **Alternative Spring Break (ASB)** – Ten sites are being developed
- **Two students from ASB** have been nominated for the Peace Corp: Lucia Goyer and Christen Quiggley.
- **The Rory Community Calendar** – a new on-line initiative to make available information regarding community service project information to students and organizations interested in doing community service

FACILITIES, CONSTRUCTION AND HOUSING OCCUPANCY

- **Recreation Facilities:** Ground was broken on new artificial-turf Recreation Field with anticipated completion in June 2007

- **The new Public Safety facility** - planning will be completed this fall
- **Next Phase of Housing** – program planning is in process with building slated to be completed by fall 2009
- **The Wolfe University Center** expansion project is on schedule and will be completed May 2007
- **Landscaping improvements** have been made on the housing quad and at the Lakeview complex

Housing Occupancy: Spring overall occupancy is 91% compared to 92.5% for fall 06. Typically we experience a decline in spring occupancy as a result of graduation, withdraws for financial and academic reasons. Presently we are still receiving and processing Housing agreements for the spring term and expect a modest improvement in overall occupancy rates. The numbers below reflect the fall and spring occupancy respectively by residential area:

Bay Vista Housing = 100/93%
 Everglades Hall = 99.22/98%
 Lakeview Hall = 93.33/91%
 Panther Hall = 77.45/67%
 University Park Apartments = 94.66/95%
 University Park Towers = 98.79/98%

This page intentionally left blank

**THE FLORIDA INTERNATIONAL UNIVERSITY
BOARD OF TRUSTEES
ACADEMIC POLICY AND STUDENT AFFAIRS COMMITTEE**

15 FEBRUARY 2007

SUBJECT: ACADEMIC AFFAIRS REPORTS

PROPOSED COMMITTEE ACTION:

None. Discussion Item.

REPORTS

- A. HONORS COLLEGE - LESLEY NORTHUP
 - B. GRADUATE EDUCATION –GEORGE WALKER
 - C. IMPLEMENTATION OF CLASS UTILIZATION INITIATIVE -
RONALD BERKMAN; CORINNE WEBB
 - D. UNDERGRADUATE REPORT – CORINNE WEBB
-

EXHIBITS/SUPPORTING DOCUMENTS:

- HONORS COLLEGE: STUDENT RESEARCH AND ARTISTIC INITIATIVES
- UNIVERSITY GRADUATE SCHOOL REPORT
- UNDERGRADUATE REPORT

FACILITATOR/PRESENTER:

- RONALD BERKMAN

This page intentionally left blank

SRAI *The Honors College @ Florida International University Student Research & Artistic Initiatives*

What if I want to work with a faculty member on a project not covered in my courses?
What if I want to do research or a creative project for my fourth year option?
What if I want to present my work at a state or national conference?
Is there an Honors seminar that deals especially with research opportunities?

Consider the SRAI Program...

The SRAI Program is your catapult. By pairing interested students with faculty experts, the SRAI Program increases knowledge about opportunities in the disciplines, builds student confidence, strengthens the résumé, and secures competitive advantages for graduate school and the workforce.

How does it work?

The Student Research & Artistic Initiatives (SRAI) Program in the Honors College provides opportunities to Honors College students by pairing them for projects with faculty experts at FIU, and exhibiting those projects at an annual research conference at FIU. The Program provides opportunities for supervised research and formal creative projects to students from all academic areas. SRAI draws on a large pool of faculty talent and physical resources that already exist throughout the University. The SRAI Research Center, adjoining the Honors College Student Center in Deuxieme Maison at University Park is the headquarters for SRAI activities and information.

How do I get involved in SRAI?

If you are interested in pursuing a faculty supervised research or creative project you can begin by browsing the online Database of Affiliates on the SRAI website at <http://honors.fiu.edu/srai>, or by simply walking into the SRAI Research Center at UP during posted operating hours to meet with a SRAI advisor. The online database is a complete listing of current Research Affiliates with their areas of interest or specialization. You may also contact one of the SRAI personnel listed on the website to make an appointment before coming to the office.

Does it work?

Yes. 38 Honors College Students enrolled in the Student Research & Artistic Initiatives Program presented at, or had proposals accepted to present, at major juried external conferences at the state and national level during the 2005/2006 academic year. 56 substantial projects were presented at the 2006 SRAI Research Day Conference at the University Park Campus of FIU. External conferences included:

- National Collegiate Honors Council Conference
- National Council of Undergraduate Research National Conference
- Florida Collegiate Honors Council Conference
- American Chemical Society National Meeting
- Weinstein Conference in Cardiac Development
- American Chemical Association National Meeting
- Association for Research in Vision & Ophthalmology Conference
- American Academy of Forensic Sciences Conference
- American Society of Microbiology's 106th General Meeting
- Society for Research on Identity Formation National Conference
- Annual Hawaii International Conference on Arts and Humanities

**DIRECTOR: PROF. JOHN S. KNESKI, ASSOCIATE DEAN & FELLOW
SRAI PROGRAM OFFICE, THE HONORS COLLEGE ~ FLORIDA INTERNATIONAL UNIVERSITY
UNIVERSITY PARK CAMPUS, DM 233 ~ MIAMI, FLORIDA 33199 ~ TELEPHONE: (305) 348-4100
EMAIL: SRAI@FIU.EDU ~ INTERNET: HONORS.FIU.EDU/SRAI**

This page intentionally left blank

FLORIDA INTERNATIONAL UNIVERSITY BOARD OF TRUSTEES ACADEMIC POLICY AND STUDENT AFFAIRS COMMITTEE

UNIVERSITY GRADUATE SCHOOL REPORT FEBRUARY 15, 2007

In order for Florida International University to move to the next level as a research university, and to meet its mission to provide outstanding graduate education, it is essential that the University increase the quantity of graduate students in specific areas and, overall, increase the quality of its graduate students and graduate programs. Much progress has been made, but much remains to be done.

More attention to marketing efforts, attrition rates, and the level of graduate stipends is crucial. The development of a more robust Graduate School is needed. More institutional information on such indicators of quality as retention rates, time to degree, student satisfaction, and placement in Ph.D. programs, as well as regular review of programs leading to a school and department strategic plan, are among the efforts required. The acquisition of more resources for graduate education from private and governmental resources is necessary. For many of the efforts to succeed, more personnel dedicated to planning, and developing systems for obtaining institutional data is required. At the February Board of Trustees meeting we will be prepared to discuss in more detail efforts currently underway. We provide some background and related examples briefly below.

Current Status of Graduate Enrollment and Ph.D. Production:

In Table 1 (page 3) we provide a summary of Graduate Enrollment at the close of the Fall 2006 semester, and the Board of Governors expectations for the Academic Year 2007-2008.

The challenge differs by academic unit, but overall we need to increase Graduate I enrollments by 354 (11%) and Graduate II enrollments by 77.4 (14%) in terms of FTE for the next year. Spring 2007 preliminary enrollments are very encouraging and will be discussed more fully at the Board meeting. However, the challenge of increasing enrollments will continue. We have shared this information with the deans, and have asked them to provide us with their plans in this area in time for us to summarize the results in February. The current rate of doctoral production along with a historical summary is included in Figure 1. We note that to reach our short term goal of 100 doctoral degrees per year, additional efforts will be required.

The University Graduate School has embarked on a general marketing campaign to increase applications. This strategic initiative involves both dedicated personnel and advertisements in the media.

Institutional Information on Graduate Programs:

Of course lowering attrition rates by improved mentoring and other academic processes is another way to increase graduate headcount, and improve graduation rates as well as time-to-degree. The University Graduate School does not currently have baseline data by department for Doctoral Programs in such areas as attrition rates, time to degree, and overall student satisfaction. We have asked to be provided with some of this information through Institutional Research. We have also distributed a survey to doctoral students to determine their level of satisfaction, and areas where improvements are especially needed. We will be in a position to share survey results with the Trustees at the February meeting.

Plans for the Next Few Months:

The University Graduate School Dean is a senior author on a Carnegie book on improving doctoral programs. The book is based on experience, and a five-year study led by Dean Walker, at the Carnegie Foundation. Once we have the required FIU background data, we will move quickly (working with schools, departments, graduate faculty, and students) to use the lessons learned from the Carnegie Study to enrich our FIU programs.

The level of resources for graduate education plays a key role in the quality and success of graduate programs. There are major opportunities at the NSF and NIH for FIU to gain substantial funds to support doctoral students. We need to submit at least one major grant to each of these foundations in the next year. For this effort to be successful there will need to be a greater level of engagement, interdisciplinary cooperation, and institutional support by the faculty and administration of the University.

Table 1

Level	BOG TARGET for 07-08	YEAR-TO-DATE FTE (SUMMER, FALL AND SPRING)*	DIFF BETWEEN BOG TARGET AND Y-T-D	% Needed Growth
Grad 1	3231	2876.9	354.1	11%
Grad 2	541	463.6	77.4	14%

*As of 1/4/2007



FLORIDA INTERNATIONAL UNIVERSITY
DAILY ENROLLMENT
Fall 2006
REPORT SUMMARY
 (As of the end of the day on 11/30/06.)

HEADCOUNT November 30, 2006 38,550
 *** December 1, 2005 37,388

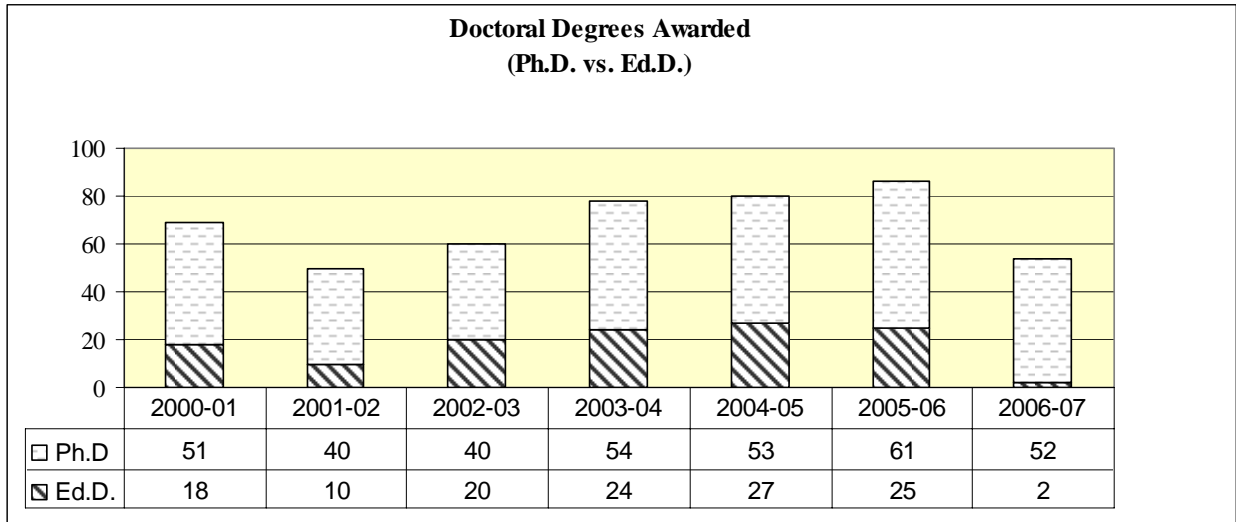
Fundable Student Credit Hours					
Level of Instruction	Fall 06 Total FSCH	Fall 05 Total FTE	Fall 2006 compared to Same Time Fall 2005	Fall 06 FSCH Compared To End Of Term Fall 05	*Fall 06 FSCH compared To FIU Target For Fall 05
Lower Division	154,705	3,868	3.1%	3.2%	8.8%
Upper Division	191,059	4,776	5.6%	5.6%	-0.9%
Graduate	47,328	1,479	12.7%	3.6%	3.9%
Total	393,092	10,123	5.4%	4.4%	3.2%

Fall 2006 FSCH Compared to Same Time Fall 2005 by College			
College/School	Lower Division	Upper Division	Graduate
Architecture	-15.9%	6.1%	28%
Arts & Sciences	-1.4%	-0.2%	6%
Business	9.1%	5.5%	25%
Education	-7.4%	9.1%	1%
Engineering	211.5%	9.1%	4%
Hospitality	17.39%	8.7%	22%
Journal & Mass Comm	N/A	9.77%	9%
Law	N/A	N/A	21%
Nursing & Health Sciences	31.69%	9.77%	8.50%
Social Work, Justice & Pub. Aff	N/A	9.48%	-13.31%
Public Health	59.35%	8.75%	22.01%
CHUA/Interdisciplinary	N/A	171.88%	64.49%

Notes:

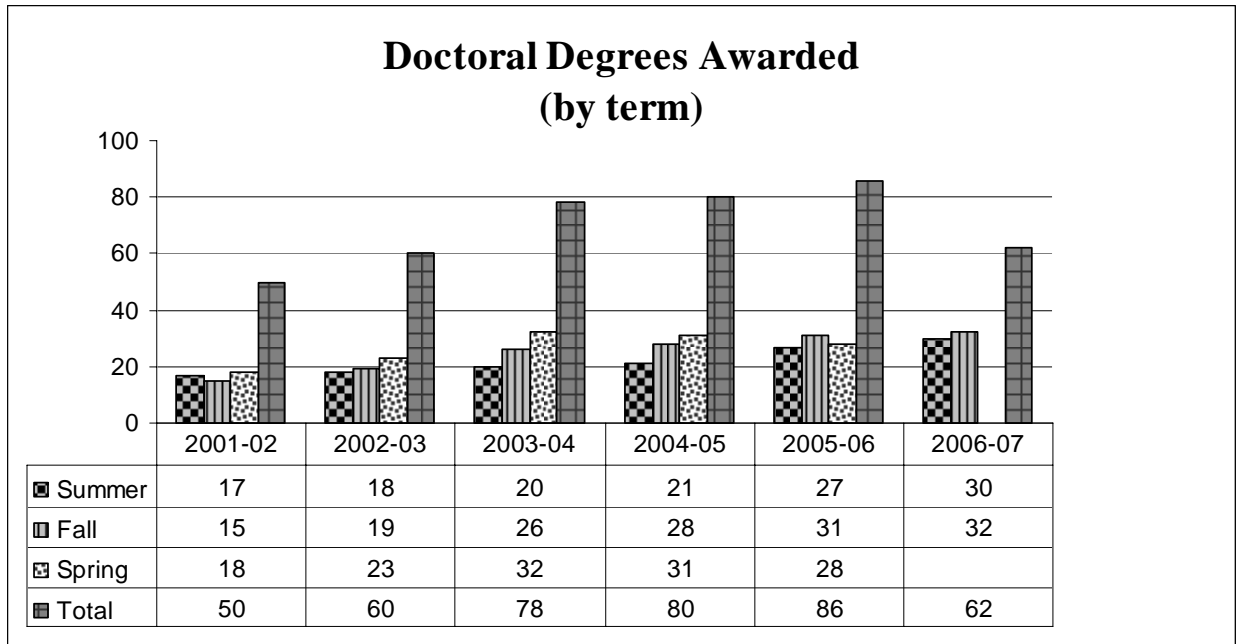
*Target (goals) based on prorated amount of FTE by level and term needed to reach target of 23,998 FTE per plan budgeted as of 06/2005.
 † Some additional FSCHs will be added before the end of term due to CAPS and other miscellaneous enrollments.
 ** Time period for historical information may vary depending on official registration date and/or availability of data.

Figure 1: Doctoral Degrees Awarded



	Ed.D.	Ph.D.	% of Ph.D.
2000-01	18	51	74%
2001-02	10	40	80%
2002-03	20	40	67%
2003-04	24	54	69%
2004-05	27	53	66%
2005-06	25	61	71%
2006-07	2	52	96%

Figure 1: Doctoral Degrees Awarded (continued)



	Summer	Fall	Spring	Total
2001-02	17	15	18	50
2002-03	18	19	23	60
2003-04	20	26	32	78
2004-05	21	28	31	80
2005-06	27	31	28	86
2006-07	30	25		55

Note: Eight doctoral degrees are yet to be posted for Fall 06 (5 Ph.D., 3 Ed.D.) but the expectation is that they will be posted within the next two weeks.

This page intentionally left blank

Academic Policy and Student Affairs Report Enrollment Services Update: January 2007

I. University Enrollment

As of January 16th, there were 36,247 students enrolled at the university representing a 4% (1,392) increase in headcount enrollment over the 34,855 students registered this time last spring.

As of this same reporting date, the university had earned a total of 24,381 FTEs over the summer, fall and spring semesters. While adjustments are still anticipated in enrollment and FTEs for the spring semester, the university is positioned to meet the 23,995 FTE target for 2006/07.

II. First Generation State Matching Scholarship Program

The university successfully raised \$521,000 for the new First Generation Scholarship Program. The state provided matching funds in equal measure to enable the university to award \$1,042,000 in scholarships to 1,506 need-based first generation undergraduate students for 2006/07. To qualify for this program, undergraduate students must be first generation (neither parent has attained a college degree), enrolled in a degree program for a minimum of 6 credits per semester, be a resident of State of Florida and have demonstrated need through the FAFSA application process.

Last fall, there were 2,907 need-based first generation students eligible for this new scholarship program. By awarding 1,506 students this new scholarship, the university was able to assist 52% of those eligible for the program. Had the university received donations equal to its full \$817,937 allocation by the December 1st program deadline, an additional \$595,874 could have been distributed to eligible students.

III. New 3-Day Class Schedule

The Classroom Utilization Implementation Committee, appointed by Provost Berkman, is currently engaged in developing guidelines for implementing the Classroom Space Utilization Committee's recommendations. These recommendations were studied and endorsed by the Faculty Senate and approved by the university administration last fall. The Classroom Space Utilization Committee recommended technological improvements to classrooms, scheduling priorities for maximizing classrooms, the adoption of an annual schedule, elimination of non-standard class meeting times, the adoption of official start and end times for all classes and the creation of a new daytime schedule for the fall and spring semesters.

A comprehensive communication plan, consisting of new web-site, FAQs, posters, flyers and email communications, is under development to facilitate clear communication about these changes and provide faculty, students and staff an opportunity to ask questions and exchange ideas about the implementation plan. Beginning in Fall 2007, the university will move its current daytime class meeting pattern from a 2/2 (M/W and T/Th) schedule to a 3/2 (M/W/F and T/Th) schedule. The class and hour schedule for evening classes and the summer session have remained unchanged from the current schedule.

IV. Quarterly Report: BOG/BOT Performance Accountability Report

The January quarterly report represents the Fall 2006 graduates and Spring 2007 returning students. The Four-Year FTIC graduation target expects 20% of the 1,503 students who entered in fall 2003 to graduate by summer 2007. To date, 482 (32%) students are on track to graduate within this timeframe. The Six-Year FTIC graduation target expects 48% of the 1,297 students who entered in fall 2001 to graduate by summer 2007. A total of 693 (53.4%) students are currently on track to graduate by summer 2007.

BOG GRADUATION TARGETS FOR FIU

(APPROVED BY FIU'S BOARD OF TRUSTEES JUNE 29,2005)

Measure One: Graduation Rates								
Four-Year for FTIC	Performance Index	Peer Average	US Average (1997-2001)	1998-2002 Cohort	1999-2003 Cohort	2000-2004 Cohort	2003-2007 Target	2009-2013 Target
	18%	16%	34%	19%	21%	19%	20%	25%
Six-Year for FTIC	Performance Index	Peer Average	US average (1997-2003)	1996-2002 Cohort	1997-2003 Cohort	1998-2004 Cohort	2001-2007 Target	2007-2013 Target
	45%	40%	56%	44%	47%	47%	48%	55%
AA-Transfer Two-Year	Performance Index	Peer Average	US Average	2000-2002 Cohort	2001-2003 Cohort	2002-2004 Cohort	2005-2007 Target	2011-2013 Target
	33%			39%	36%	34%	35%	40%
AA-Transfer Four-Year	Performance Index	Peer Average	US Average	1998-2002 Cohort	1999-2003 Cohort	2000-2004 Cohort	2003-2007 Target	2009-2013 Target
	72%			70%	73%	78%	78%	82%
Measure Four: Minority Baccalaureate Production								
<u>Baccalaureate Degrees</u>	Performance Index	Peer Average	US Average	2001-2002	2002-2003	2003-2004	2006-2007 Target	2012-2013 Target
Total Under-Represented Minority	66%			69%	67%	67%	67%	70%
Black, Non-Hispanic	14%			13%	13%	13%	13%	15%
Hispanic	52%			55%	54%	53%	54%	55%

GradXPress FTIC 2003: Four-Year Analysis Report

Cohort size: 1503

Cohort: FTIC 2003

1503

Jan 2007

Four Year Graduation Target of 20% or 301 graduated by end of Summer 07

Report	Graduated	Not Enrolled	Enrolled	Off Track					On Track	Fast Track	Total
				Grades	CLAST*	Undec	Credits	Total off**			
Nov. 2005	0	455	1048	118	439	206	318	505	284	259	543
Feb. 2006	7	478	1018	109	42	164	335	489	165	364	529
May 2006	18	465	1020	85	36	135	289	533	44	443	487
Nov 2006	48	537	918	91	39	89	334	463	238	217	455
Jan 2007	85	555	863	85	31	69	462	474	153	236	389
Change (Nov-Jan)											

Progress to target:

graduated	85	5.7%
on track	153	10.2%
fast track	236	15.7%
In grad process	8	.5%
Total	482	32.1%

Opportunities:

Not enrolled >120 credits	1	
Off track grades only (2.0-2.23)	2	
Off track CLAST only	2	
Off Credits only (99-104)	63	4.2%
Total	68	4.5%

*The dramatic change in CLAST passage is due to the activation of the auto exemption process in PantherSoft.

** The total off-track is not the sum of the 4 variables due to overlapping among the areas.

GradXPress FTIC 2001: Six-Year Analysis Report

Cohort size: 1297

Cohort: FTIC 2001

1297

Jan 2007

Six Year Graduation Target of 48% or 623 graduated by end of Summer 07

Report	Graduated	Not Enrolled	Enrolled	Off Track					On Track	Fast Track	Total
				Grades	CLAST*	Undec	Credits	Total off**			
Nov. 2005	314	526	457	42	211	24	18	84	52	321	373
Feb. 2006	407	543	347	45	17	14	37	102	37	208	245
May 2006	458	527	312	41	17	10	27	87	23	204	227
Nov 2006	530	554	213	35	7	6	42	93	38	82	120
Jan 2007	573	561	163	31	8	10	65	73	16	74	90
Change (Nov-Jan)	43	7	-50	-4	1	4	23	-20	-22	-8	-30

Progress to target:

graduated	573	44.2%
on track	16	1.2%
fast track	74	5.7%
In grad process	30	2.7%
Total	693	53.4%

Opportunities:

Not enrolled >120 credits	9	.6%
Off track grades (2.0-2.23)	16	1.2%
Off track CLAST (only)	1	
Off Credits (99-104)	7	.5%
Total	33	2.5%

*The dramatic change in CLAST passage is due to the activation of the auto exemption process in PantherSoft.

** The total off-track is not the sum of the 4 variables due to overlapping among the areas