

THE FLORIDA INTERNATIONAL UNIVERSITY
BOARD OF TRUSTEES
ACADEMIC POLICY AND STUDENT AFFAIRS COMMITTEE

MONDAY, 12 JUNE 2006
11:00 AM
FLORIDA INTERNATIONAL UNIVERSITY
MARC INTERNATIONAL PAVILION
UNIVERSITY PARK CAMPUS
MIAMI, FLORIDA

MEMBERSHIP

HERBERT WERTHEIM, *CHAIR*
BETSY ATKINS, *VICE CHAIR*
ARMANDO GUERRA
BRUCE HAUPTLI
ALFONSO LEON
FOUNDATION BOARD OF DIRECTORS,
NOEL GUILLAMA-ALVAREZ

AGENDA

- | | |
|---|---|
| I. CALL TO ORDER | HERBERT WERTHEIM |
| II. APPROVAL OF MINUTES | HERBERT WERTHEIM |
| III. CHAIR'S REMARKS | HERBERT WERTHEIM |
| IV. ITEMS FOR COMMITTEE REVIEW | |
| A. ACTION ITEMS | |
| 1. TENURE NOMINATIONS | RONALD BERKMAN
DOUGLAS WARTZOK |
| 2. TENURE AS A CONDITION OF EMPLOYMENT
 NOMINATIONS | RONALD BERKMAN
DOUGLAS WARTZOK |
| B. REPORTS (<i>NO ACTION REQUIRED</i>) | |
| 3. HEALTH AND MEDICAL EDUCATION INITIATIVE | RONALD BERKMAN |
| 4. STUDENT AFFAIRS REPORTS | ROSA JONES |
| A. STUDENT AFFAIRS UPDATE | |
| B. HOUSING | |
| C. HEALTH SERVICES | |

5. ACADEMIC AFFAIRS REPORTS

A. GRADUATE REPORT

STEPHAN MINTZ

B. UNDERGRADUATE REPORT

CORINNE WEBB

C. ACCOUNTABILITY MEASURES (BOG) REPORT

CORINNE WEBB

V. OTHER BUSINESS (*IF ANY*)

HERBERT WERTHEIM

VI. ADJOURNMENT

HERBERT WERTHEIM

**NEXT ACADEMIC POLICY AND STUDENT AFFAIRS COMMITTEE MEETING
IS SCHEDULED FOR 28 SEPTEMBER 2006**

**THE FLORIDA INTERNATIONAL UNIVERSITY
BOARD OF TRUSTEES
ACADEMIC POLICY AND STUDENT AFFAIRS COMMITTEE**

12 JUNE 2006

**SUBJECT: ACADEMIC POLICY AND STUDENT AFFAIRS COMMITTEE MEETING
MINUTES, 20 MARCH 2006**

PROPOSED COMMITTEE ACTION:

Adopt the following Resolution:

RESOLVED that the minutes of the meeting of the Florida International University Board of Trustees' Academic Policy and Student Affairs Committee held on 20 March 2006, attached to this Resolution as Exhibit "A," are hereby approved.

EXHIBITS/SUPPORTING DOCUMENTS:

- EXHIBIT "A": 20 MARCH 2006
ACADEMIC POLICY AND STUDENT
AFFAIRS COMMITTEE MEETING
MINUTES.

FACILITATOR/PRESENTER:

- CHAIRMAN HERBERT WERTHEIM

This page intentionally left blank.

DRAFT

**THE FLORIDA INTERNATIONAL UNIVERSITY
BOARD OF TRUSTEES**



**ACADEMIC POLICY AND STUDENT AFFAIRS COMMITTEE
MINUTES
20 MARCH 2006**

I. Call to Order

The Florida International University Board of Trustees Academic Policy and Student Affairs Committee meeting was called to order by Committee Chair Herbert Wertheim on Monday, 20 March 2006, at 2:03 pm, in the University Park Graham Center Ballrooms, Miami, Florida.

The following attendance was recorded:

Present:

Herbert Wertheim, *Chair*
Betsy Atkins, *Vice Chair*
Armando Guerra
Bruce Hauptli
Alex Prado

Trustee Kirk Landon was also in attendance.

II. Approval of Minutes

Committee Chair Herbert Wertheim asked if there were any additions or corrections to the minutes of the 21 November 2005, Academic Policy and Student Affairs Committee meeting. Hearing none, the Committee adopted the following:

RESOLVED that the minutes of the meeting of the Academic Policy and Student Affairs Committee held on 21 November 2005, attached to this Resolution as Exhibit "A," are hereby approved.

III. Chair's Remarks

Committee Chair Wertheim welcomed all present to the meeting and thanked each Trustee for their work on behalf of the University. He noted that the University's School of Architecture had received full accreditation for its Interior Design program from the Council of Interior Design.

Committee Chair Wertheim also noted that the University ranked among the top 50 Best Values in Public Colleges for 2006 in a study conducted by *Kiplinger Magazine*. He also noted that the current edition of the *Fortune Small Business* named the University as one of 10 "cool" universities in the country for entrepreneurial programs and research, putting it alongside institutions such as Harvard University and the University of Arizona. Committee Chair Wertheim added that the magazine, which is geared toward entrepreneurs and small business owners, stated that the University's Eugenio Pino and Family Global Entrepreneurship Center serves the largest minority population of any such program in the country.

IV. Items for Committee Review

A. Action Items

1. M.S. Human Resources Management

Provost Berkman presented the Human Resources Management Masters degree program for Committee review. He reported that the degree would represent a conversion from an existing track within the M.S. in Management to a free standing degree. He also reported that the degree program was robust and represented a proactive response to the market demand.

Without further discussion, the Committee recommended the Board adopt the following Resolution:

RESOLVED that the Florida International University Board of Trustees (the BOT) hereby approves the Master of Science in Human Resources Management, attached to this Resolution as Exhibit "B," and

FURTHER RESOLVED, that the BOT authorizes the University Administrator to file the proposal with the Division of Colleges and Universities and take all actions necessary to implement the program.

2. B.S. Environmental Engineering

Provost Berkman presented the Environmental Engineering Bachelors degree program for Committee review. He noted that the proposed degree program moved an existing technology degree in Urban and Environmental Systems to engineering. He also noted that the degree program was an essential component in the University's environmental cluster programs. Provost Berkman added that the degree program was included in the Board of Governors Strategic Initiative list.

Without further discussion, the Committee recommended the Board adopt the following Resolution:

RESOLVED that the Florida International University Board of Trustees (the BOT) hereby approves the Bachelor of Science in Environmental Engineering, attached to this Resolution as Exhibit "C," and

FURTHER RESOLVED, that upon approval, the BOT authorizes the University Administrator to file the proposal with the Division of Colleges and Universities and take all actions necessary to implement the program.

3. Ph.D. Track, Materials Science Engineering

Executive Vice Provost Wartzok presented the Materials Science Engineering Ph.D. Track for Committee review. He noted that the University currently offers a Ph.D. program in Mechanical Engineering through the Department of Mechanical and Materials Engineering and that this proposed program would be a Track within the Mechanical Engineering Ph.D. Dr. Wartzok added that there is an increasing number of doctoral students within the department focusing their research on materials science questions and that this new Track will allow appropriate designation of these research efforts.

Without further discussion, the Committee recommended the Board adopt the following Resolution:

RESOLVED that the Florida International University "BOT" hereby approves the Ph.D. Track in Materials Science Engineering, attached to this Resolution as Exhibit "D," and

FURTHER RESOLVED, that the "BOT" authorizes the University President to file the proposal with the Division of Colleges and Universities and take all actions necessary to implement the program.

4. Nomenclature Change, Interior Design

Provost Berkman requested that the Dean of the School of Architecture, Juan A. Bueno, present the Nomenclature Change in Interior Design. Dean Bueno noted that the Architecture accreditation boards only accredit first professional degrees and require differentiation between professional and pre- or post-professional degrees. Dean Bueno and the faculty of the School of Architecture requested that the Post-Professional Degree Track in Interior Design (not now eligible for accreditation) be changed to the Master of Arts in Interior Design with no curricular changes.

Without further discussion, the Committee recommended the Board adopt the following Resolution:

RESOLVED that the Florida International University Board of Trustees (the BOT) hereby approves the Degree Nomenclature change of the Post-Professional Degree Track in Interior Design to the Master of Arts in Interior Design, attached to this Resolution as Exhibit "E," and

FURTHER RESOLVED, that the BOT authorizes the University Administrator to file the proposal with the Division of Colleges and Universities and take all actions necessary to implement the nomenclature change.

5. Revisions to the Student Code

Vice President Rosa Jones presented the proposed revisions to the University's Student Code of Conduct for Committee review. She added that the revisions added clarity in the Student Code language, emphasized that student disciplinary hearings were educational meetings rather than a court of law, and addressed recurring issues within the Student Code. Committee Chair Wertheim inquired as to the existence of similar documents at other universities. Vice President Jones affirmed that other universities utilize a similar Student Code.

Without further discussion, the Committee recommended the Board adopt the following Resolution:

WHEREAS, the Florida International University Board of Trustees (the BOT) is authorized to establish a code of conduct to govern University students;

WHEREAS, the Vice President for Student Affairs and staff responsible for administering the student disciplinary process, after conducting their annual review of the FIU Student Code of Conduct (Student Code), are recommending revisions to the Student Code;

NOW, THEREFORE BE IT RESOLVED, that the Board of Trustees adopts the proposed revisions to the Student Code of Conduct attached hereto as Exhibit "F"

BE IT FURTHER RESOLVED, that the Student Code attached hereto as Exhibit "F", as revised, shall be effective upon the commencement of the Summer A term;

BE IT FURTHER RESOLVED, that the University Administration take all actions necessary to give effect to this Resolution.

B. Reports

6. Health and Medical Education Initiative

Committee Chair Wertheim introduced the report on the Health and Medical Education Initiative. He reminded Trustees that the Florida Board of Governors was scheduled to vote on Thursday, 23 March 2006, on the establishment of medical schools at FIU and UCF. Committee Chair Wertheim asked Provost Berkman to update the committee and to present his report. Provost Berkman thanked Committee Chair Wertheim on his generosity in providing the initial donation for

a School of Medicine. He added that Committee Chair Wertheim had committed himself wholeheartedly to this initiative since its inception and had attended every Board of Governors meeting addressing the School of Medicine requests. Provost Berkman summarized the results of a recently released report showing the projected economic impact a School of Medicine at FIU would have on South Florida.

7. Energy Conservation Report

Committee Chair Wertheim introduced the report addressing energy conservation at the University. Vice President Marcos Perez reported on campus-wide initiatives undertaken by Facilities Management to optimize heating and air conditioning usage. He added that FIU had the lowest per sq. ft. energy usage of any university in the state. Dr. Yong Tao, Director of the Building Energy, Environment and Conservation Systems Laboratory in the University's College of Engineering and Computing, presented the results of a comprehensive energy usage analysis of the University's HLS I building. Committee Chair Wertheim commended Vice President Perez and Dr. Tao on their respective contributions to this thorough and comprehensive report.

8. Student Affairs Report

Vice President Rosa Jones presented the Division of Student Affairs Summary Report to the Committee. She reported that although the division was faced with a plethora of challenges particularly in the aftermath of recent hurricanes, the 2005-2006 academic year surpassed many expectations and was deemed a success for both staff and students alike.

VP Jones reported on student accomplishments noting that out of 700 national nominees, University student Aurelio Rivera was selected as a finalist for the Truman Scholarship, which recognizes college juniors with exceptional leadership potential committed to careers in public service. She also reported on student activities noting how exceptional the 19 students who attended "FIU Day" during Spring break were and added that 120 students were currently involved in alternative Spring breaks focused on community service. She noted that a new student residential facility with 825 new beds was set to open on August 2006.

9. Academics Affairs Reports

Communications and Distance Learning Report

Executive Dean of the College of Business Administration Joyce Elam presented the Communications and Distance Learning Report to the Committee. She reported on the initiatives of the FIU Online Task Force and on growth projections of the online learning programs. She also reported on the costs associated with providing online education. Trustee Atkins inquired as to the existence of an increased demand within the student body for online learning programs in contrast to the University's current offerings. Dean Elam noted that online learning classes fill up at a faster rate than do traditional classes and that the University had not satisfied the increasing demand. Committee Chair Wertheim noted that online education should continue to be a focus for the University.

Enrollment Management Report

Vice President Corinne Webb presented the Enrollment Management Report to the Committee. In response to inquiry from the Board at the November meeting, VP Webb gave an update on the educational and financial aid benefits available to veterans, and the special outreach currently underway to recruit and welcome returning veterans to the university. Committee Chair Wertheim commended VP Webb and the Office of Veterans' Affairs on their efforts in reaching out to veterans.

On a separate topic, VP Webb also reported on a new tracking system designed to monitor graduation progress among undergraduate students. She added that this tracking system led to an outreach program, where students who fall "off-track" are contacted by University staff in order to assist them in renewed progress toward their degree.

Committee Chair Wertheim requested, for the sake of time and because of the thoroughness of the reports provided in the agendas, that the Graduate Report, the Academic Learning Compacts (ALC) and the FDOE/BOG Task Force on Access of the Academic Affairs Reports to be accepted as written.

V. Other Business

There was no other business brought forward.

VI. Adjournment

With no other business, Committee Chair Wertheim adjourned the meeting at 4:06 p.m.

Trustee Requests

1. *Chairman Wertheim requested that a representative from one of the University's Colleges and Schools report at each Academic Policy and Student Affairs Committee meeting.*
2. *Committee Chair Wertheim requested that the Division of Student Affairs report on University housing statistics, contrasting historical to current rates. Vice President Rosa Jones will coordinate the report.*
3. *Committee Chair Wertheim requested that Dean Joyce Elam follow up on the status of the FIU Online Task Force, including statistics on funding and support required to meet desired levels of growth and expansion.*
4. *Committee Chair Wertheim requested a report on student health care at the University for the next Committee meeting. Vice President Rosa Jones will coordinate the report.*
5. *Committee Chair Wertheim requested a report examining the Board of Governors assessment of the State's critical needs areas. Executive Vice Provost Wartzok will coordinate the report.*

Attached: Exhibit "A", "B", "C", "D", "E" and "F."

MEB/mb
4.10.06

**THE FLORIDA INTERNATIONAL UNIVERSITY
BOARD OF TRUSTEES
ACADEMIC POLICY AND STUDENT AFFAIRS COMMITTEE**

12 JUNE 2006

SUBJECT: TENURE NOMINATIONS

PROPOSED COMMITTEE ACTION:

Recommend Board adoption of the following Resolution:

WHEREAS each board of trustees is authorized to establish the personnel program for all employees of the university including tenure,

WHEREAS the University President is recommending the granting of Tenure for twenty-three (23) nominees as listed in Exhibit "B",

THEREFORE BE IT RESOLVED that the Florida International University Board of Trustees approves the granting of Tenure to the twenty-three individuals as listed in Exhibit "B" based on the recommendations of the University President.

BACKGROUND INFORMATION:

LEGAL AUTHORITY:

Resolution of the Florida Board of Governors, dated January 7, 2003.

Resolution delegating and delineating powers of local boards of trustees, states in part,

(19)(a) Each board of trustees shall establish the personnel program for all employees of the university, including the president, pursuant to the provisions of chapter 1012 and, in accordance with rules and guidelines of the Florida Board of Governors, including: compensation and other conditions of employment, recruitment and selection, non-reappointment, standards for performance and conduct, evaluation, benefits and hours of work, leave policies, recognition and awards, inventions and works, travel, learning opportunities, exchange programs, academic freedom and responsibility, promotion, assignment, demotion, transfer, tenure and permanent status, ethical obligations and conflicts of interest, restrictive

covenants, disciplinary actions, complaints, appeals and grievance procedures, and separation and termination from employment.

EXHIBITS/SUPPORTING DOCUMENTS:

- EXHIBIT “B” – TENURE NOMINEES
- ATTACHMENT 1 – TENURE NOMINEES’ BIOS
- ATTACHMENT 2 – TENURE PROCESS

FACILITATOR/PRESENTER:

- RONALD BERKMAN
- DOUGLAS WARTZOK

Exhibit "B"

Florida International University						
2005 - 2006						
Tenure Nominations						
				Current	Proposed	
Names of Candidates	Department	Gender	Ethnicity	Rank	Rank	Comments
School of Architecture						
Alice Gray Read	Architecture	F	W	Asst. (9003)	Assoc. (9002)	
College of Arts and Sciences						
William T Anderson, Jr.	Earth Sciences	M	W	Asst. (9003)	Assoc. (9002)	
Richard Chisik	Economics	M	W	Asst. (9003)	Assoc. (9002)	
Rebecca Friedman	History	F	W	Asst. (9003)	Assoc. (9002)	
Evelyn Gaiser	Biological Sciences	F	W	Asst. (9003)	Assoc. (9002)	
Gueo Grantcharov	Mathematics	M	W	Asst. (9003)	Assoc. (9002)	
Daniel Guernsey	Art & Art History	M	W	Asst. (9003)	Assoc. (9002)	
Kimberly Harrison	English	F	W	Asst. (9003)	Assoc. (9002)	
Gail Hollander	Int'l Relations	F	W	Asst. (9003)	Assoc. (9002)	
Konstantinos Kavallieratos	Chemistry	M	W	Asst. (9003)	Assoc. (9002)	
B. M. Golam Kibria	Statistics	M	A	Asst. (9003)	Assoc. (9002)	
Felix Martin	Int'l Relations	M	H	Asst. (9003)	Assoc. (9002)	
Akinwumi Ogundiran	History	M	B	Asst. (9003)	Assoc. (9002)	
Louis R. Tcheugoue Tebou	Mathematics	M	B	Asst. (9003)	Assoc. (9002)	
Ellen Thompson	English	F	W	Asst. (9003)	Assoc. (9002)	
College of Business Administration						
Anthony Miyazaki	Marketing	M	W	Asst. (9003)	Assoc. (9002)	
College of Education						
Mary Alfred	Ed. Leadership	F	B	Assoc. (9002)	Assoc. (9002)	Tenure only
Tonette Rocco	Ed. Leadership	F	W	Asst. (9003)	Assoc. (9002)	
College of Engineering						
Syed Ahmed	Constr. Mgmt.	M	A	Asst. (9003)	Assoc. (9002)	
Sakhrat Khizroev	Electrical & Comp.	M	W	Assoc. (9002)	Assoc. (9002)	Tenure only
Yong Tao	Mechanical	M	A	Assoc. (9002)	Prof. (9001)	
College of Health & Urban Affairs						
David Eitle	Criminal Justice	M	W	Asst. (9003)	Assoc. (9002)	
Sandra Gracia Jones	Nursing	F	W	Asst. (9003)	Assoc. (9002)	

Ethnicity: I=American Indian or Alaskan Native; A=Asian or Pacific Islander; B=Black, not Hispanic; H=Hispanic; or W=White, not Hispanic. **TACOE**=Tenure as a condition of employment.

THE FLORIDA INTERNATIONAL UNIVERSITY
BOARD OF TRUSTEES

2005-2006
Tenure Recommendations
Biographies

Louis Tcheugou Tebou
Asst. Professor, Department of Mathematics
PH.D. Univeristy of Metz (France)

Assistant to Associate

Louis R. Tcheugou Tebou has over ten years of experience in research and teaching mathematics. His research areas include: homogenization and control of vibrating systems. He works on various problems involving composite materials and vibrating structures. He received his Ph.D. in Applied Mathematics from the University of Metz (France) in May 1995. After completing his thesis, he went to the University of Strasbourg (France) as a visiting researcher in the research group of Professor Komornik working in the field of control of vibrating systems. In 1998, while in Strasbourg, he solved a problem raised in 1988 by the late French Academy of Sciences President, Professor Jacques-Louis Lions. This earned him his “Habilitation” (Accreditation to Supervise Research—in the French academic system is a recognition of the original character of the recipient’s method in his/her field of research) in November 1999. Afterwards he was awarded a postdoctoral fellowship at “Universidad Complutense de Madrid (Spain),” where he worked in the research group of Professor Zuazua in the field of control theory. He then moved to Canada where he joined the faculty of the department of Mathematics and Statistics at York University (Toronto). His research articles (about twenty) are published in well-established and outstanding mathematical journals. He is a member of the leading U.S. academic society: American Mathematical Society (AMS), has reviewed over twenty papers for the *AMS Mathematical Reviews* as well as papers for other journals.

Konstantinos Kavallieratos

**Asst. Professor, Department of Chemistry and Bio Chemistry
Yale University, Ph. D, Chemistry**

Assistant to Associate

Konstantinos Kavallieratos has been an Assistant Professor at the FIU Department of Chemistry and Biochemistry since the Fall of 2000. His research interests are in the themes of inorganic, supramolecular and coordination chemistry; hydrogen bonding in molecular recognition and self-assembly; applications to organometallic chemistry, organic synthesis, catalysis and separation technology, as well as sensors and materials for biomedical and environmental applications. Dr. Kavallieratos received his “Ptychion” diploma in chemistry from University of Athens in Greece in 1993, and his M.S. (1995) and Ph.D. (1998) degrees in chemistry from Yale University. Prior to joining the FIU faculty, he held a two-year (1998-2000) postdoctoral appointment for the US Department of Energy, Oak Ridge National Laboratory. He is an author or co-author of 22 refereed publications (15 of them since 2000), and 21 published abstracts. Since 2000 he has presented 33 papers at conferences, and has delivered 15 invited lectures and seminars at special symposia or other universities as guest speaker. His recent publications are focused on the theme of supramolecular chemistry with emphasis on extraction-based sensors for toxic metals, and mass spectrometry in supramolecular and coordination chemistry applications. Dr. Kavallieratos has been a Principal Investigator or Co-Principal Investigator in research and instrumentation grants awarded to FIU totaling \$1,775,369.

Tonette S. Rocco
Asst. Department of Educational Policy and Leadership Studies
The Ohio State University, Ph.D.

Assistant to Associate

Tonette Rocco graduated from The Ohio State University in 1997 with a Ph.D. in adult education and human resource development and joined FIU in 2000. Also from Ohio State she has a Master in Labor and Human Resource Management, a M.S. in Education, and a B.S. in Business Administration. She is a Houle Scholar, a program facilitated by the University of Georgia for the Kellogg Foundation in honor of Cyril O. Houle, for emerging scholars. She is lead author of a chapter in *The Handbook of Mixed Methodology*. A paper based on this chapter was one of the Defining the Cutting Edge Award Top Ten Best Papers of 2002 at the Academy of Human Resource Development Annual Conference. In addition to her publications, she has mentored students who have submitted and/or published over 100 conference papers, articles, chapters, and book reviews. At FIU, she is co-chair of the steering committee for the Annual COE Research Conference. She is co-editor of *New Horizons in Adult Education and Human Resource Development*, the first electronic journal in adult education and now housed at FIU. Editorial Board memberships include the *Journal of Mixed Methods Research*, and *Human Resource Development International* and serving as Qualitative Methods Editor for the *Human Resource Development Quarterly* (Vol. 12-15, 16-20). She is co-editing a book with Andre Grace, *Challenging the Parameters of Adult Education: John Ohliger and the Quest for Social Democracy* to be published by Jossey-Bass. Her research interests include continuing professional education; qualitative research methods; equity and privilege specifically in terms of race; sexual minorities; age and disability, and fostering student research and professional writing.

Rebecca Friedman
Asst. Professor, Department of History
University of Michigan in Ann Arbor, Ph.D.

Assistant to Associate

Rebecca Friedman received her BA with honors in Slavic Languages and Literature and History in 1990 from the University of Michigan in Ann Arbor. Her MA and PhD in Russian History were also earned from the University of Michigan (1994 and 2000 respectively). Since coming to FIU as an Assistant Professor in the History Department and Humanities Program in the fall of 2000, Friedman has achieved a number of accomplishments in the areas of research, teaching and service. In the area of scholarship, Friedman most recently was awarded an NEH Faculty Research grant for her new book-length project *Domestic Interiors and Modern Imaginings: A Cultural History of the Russian Home*. She is also working on a book chapter “Obligated Asceticism in the Mid-Nineteenth Century: The Making of Russian Men” for the volume *Beyond Pleasure: A History of Modern Asceticism*. Moreover, in 2005 her monograph *Masculinity, Autocracy and the Russian University, 1804-1863* was published (Palgrave Macmillan) and in 2002 she co-edited *Russian Masculinities in History and Culture* (Palgrave St Martins). She has also been the author of a couple of book chapters and a peer-reviewed journal article, and has delivered many papers on her research in both academic and community settings. In the area of teaching, Friedman won the FIU Faculty Excellence in Teaching award in 2005.

Evelyn E. Gaiser
Asst. Professor, Department of Ecology
University of Georgia, Ph. D.

Assistant to Associate

Evelyn E. Gaiser is an ecologist specializing in aquatic sciences, with degrees in Ecology from the University of Georgia (Ph.D.), Animal Ecology from Iowa State University (M.S.) and Biology from Kent State University (B.S.). Dr. Gaiser has 25 manuscripts published in the peer-review literature. In the taxonomic field, she has discovered and named 7 new algal species from South Carolina and 23 species from the Everglades. She has used algal fossils in sediments to recount over 4000 years of environmental history from southeastern wetlands. Her research has been supported by \$1,215,000 (lead PI) and \$920,000 (Co-PI) of grant funding from agencies including the National Science Foundation, National Park Service (NSF), South Florida Water Management District and the U.S. Environmental Protection Agency (USEPA). Dr. Gaiser received the FIU Provost's Award for Research in spring 2005. Moreover, Dr. Gaiser is active in many national and international professional societies in addition to departmental and college committees at FIU. She has presented over 30 abstracts at national and international scientific meetings. Since joining FIU's faculty, she has been invited to give 9 talks at other universities. She regularly reviews proposals to the NSF and USEPA as well as manuscripts submitted to professional journals in her field. She served as guest editor for the journal *Hydrobiologia*, and was host and organizer of the 17th North American Diatom Symposium, held at FIU in 2003. At FIU, she is director of the Periphyton Analysis Center, which is a service used by many state agencies and universities for the analysis freshwater and marine habitats in Florida. Dr. Gaiser mentors and supports 4 graduate students in her laboratory and serves on 15 graduate committees at FIU. She teaches undergraduate and graduate courses in Ecology and Freshwater Ecology and is committed to improving methods for science teaching in large classes. To this end, Dr. Gaiser has been an active participant in an NSF program to reform science teaching and has published in the peer-reviewed science education literature.

William T. Anderson

**Asst. Professor, Department of Earth Sciences
ETH-Zürich (Swiss Federal Institute of Technology), Ph.D.**

Assistant to Associate

William Anderson began his academic career at the University of Kansas, where his research career started, working as an Undergraduate Research Assistant at the Isotope Geochemistry Laboratory. He did his masters work at Syracuse University, and during that time was awarded an NSF Visiting Research Training Fellowship at the Limnological Research Center of the University of Minnesota. Dr. Anderson completed his Ph.D. in 2000, at the Geological Institute, Swiss Federal Institute of Technology, Zurich (ETH-Z) with the Earth System Science group headed by Dr. Judith Anne McKenzie. After finishing his Ph.D. in Zurich, Dr. Anderson joined the faculty at the Earth Sciences Department, FIU, in January of 2000. Dr. Anderson has to date authored or co-authored 15 journal articles (all peer-reviewed), one book chapter, and two major reports for the St. Johns River Water Management District. His first doctoral student's research paper has been accepted for publication at the beginning of 2006, and is presently *in press* (Evans et al, 2006). He has also presented over 30 abstracts at national and international scientific meetings. Since joining FIU's faculty, he has been invited to give 11 talks at US and international universities (University of Quebec, University of Geneva, and James Cook University in Australia). While at FIU, Dr. Anderson has obtained over \$600,000 in external research funding with \$331,000 of that total as lead PI. His funding has come from NSF, ACS-Petroleum Research Fund, National Parks Service (Everglades NP and Biscayne Bay NP), and the St. Johns River Water Management District. He is director of FIU's Stable Isotope Laboratory. Dr. Anderson actively serves on over 12 M.S. and Ph.D. student committees from several different departments at FIU (Biology, Chemistry, Earth Sciences, and Environmental Studies). He is very active in his field, reviewing journal articles for top ranked journals and in 2005 served on the NSF Ocean Sciences Review Panel for Major Research Instrumentation.

Kimberly Harrison

**Asst. Professor, Department of English
Louisiana State University, Ph.D.**

Assistant to Associate

Kimberly Harrison received her Ph.D. in English, with a major field in rhetoric and composition, from Louisiana State University in 1997. From 1997 to 2000, she was a member of the faculty at Mississippi College where she directed the writing program and founded the university's writing center. She joined the English department at Florida International University in the fall of 2000 as director of the undergraduate writing program on the Biscayne Bay campus. In 2005, she also began directing the writing program at University Park. In this role, she is currently developing the teacher training and professional development programs and standardizing the core writing curriculum. Her teaching interests also include undergraduate and graduate writing, technical and business writing, gender and argument, nineteenth-century women's rhetoric, rhetorical theory, and Victorian Sensation fiction. Her book-length publications include *Contemporary Composition Studies: A Guide to Theory and Terms* (Greenwood Press), *A Maryland Bride in the Deep South: The Civil War Diary of Priscilla Bond* (Louisiana State University Press), and *Victorian Sensations: Essays on a Scandalous Genre* (Ohio State University Press, forthcoming August 2006). She is currently researching southern women's rhetoric during the American Civil War. Her article "Rhetorical Rehearsals: The Construction of Ethos in Confederate Women's Civil War Diaries" was published recently in *Rhetoric Review*, a leading journal in her field. Dr. Harrison regularly presents papers on her rhetorical scholarship and administrative work in writing programs at national composition conferences.

Syed M. Ahmed
Asst. Professor, Department of Construction Management
Georgia Institute of Technology, Ph.D.

Assistant to Associate

Syed Ahmed has been an Assistant Professor and Graduate Program Director in the Department of Construction Management at the Florida International University, Miami, Florida since December, 1999. Prior to this he was a Lecturer in the Department of Civil & Structural Engineering of the Hong Kong Polytechnic University for over four years. His career, thus far, has been a blend of academic and practical experience in the area of construction management. He earned his B.S. degree in Civil Engineering from the University of Engineering & Technology, in Lahore Pakistan and M.S. and Ph.D. degrees in Civil Engineering from the Georgia Institute of Technology, Atlanta, Georgia with a dissertation on Total Quality Management focusing on Construction Sector. During the last decade, he has conducted extensive research in the areas of project management, construction safety, quality assurance and total quality management in construction, risk analysis and risk management, construction procurement, information technology, and engineering and construction education. He has published 73 papers in refereed international journals and conferences. He is also a reviewer for 6 international journals in the field of construction engineering and management. He is also the co-author of four books. Dr. Ahmed has obtained five research grants and one training grant from state and private sources during the past five and half years. The awards have totaled approximately \$418,000. While at FIU, he developed a new certificate program in Construction Engineering and Management and the On-line MS program in Construction Management. He conceived and co-chaired the series of International Conferences in Construction in the 21st Century which is organized by the Department of Construction Management, FIU and a partnering Institute every alternate year.

Mary V. Alfred
Associate Professor, Educational Leadership & Policy Studies
University of Texas at Austin, Ph.D.

Associate to Professor

Mary Alfred received a Ph.D. in Educational Administration with a specialization in Adult Education and Human Resource Development from the University of Texas at Austin in 1995. From 1980 to 1999, she was employed as a faculty and then faculty/program coordinator at Central Texas Community College. Before joining FIU, Dr. Alfred was Assistant Professor of Adult and Continuing Education at the University of Wisconsin-Milwaukee. Her research interests include learning and development among women, welfare reform as it relates to women's economic development, and equity issues in education and the workplace. As a research affiliate of the Center for Urban Education and Innovation at FIU, Dr. Alfred is part of a team conducting evaluation research of the Zone school reform initiative at Miami Dade County Public Schools. The team has received funding in the amount of \$75,000. Dr. Alfred is the 2003 recipient of the Commission of Professors of Adult Education Early Career Award and a 1999 recipient of the Houle Scholars' Fellowship program for emerging scholars of adult education from Africa, Latin America, and the United States. This award provided a grant of \$40,000 over a two-year period for research activities. Dr. Alfred is the editor of two books, *Immigrant Women of the Academy* and *Learning in Sociocultural Contexts*. Dr. Alfred is the co-editor of two journals—*New Horizons in Adult Education* and *Adult Learning*. She is a book review editor for *Adult Education Quarterly* and holds membership on several adult education journal editorial boards. She has served on the executive board of the Commission of Professors of Adult Education and the Adult Education Research Conference Steering Committee.

Yong X. Tao

**Associate Professor, Department of Mechanical Engineering
University of Michigan, Ph.D.**

Associate to Professor

Dr. Yong X. Tao joined Florida International University in Fall 2000 after being on the faculty with Tennessee State University from 1994-2000. He graduated with a Ph.D. from the University of Michigan, and later went to post-doctoral training in University of Saskatchewan, Canada. He then joined Tennessee State University in 1994 and Florida International University in 2000. He also served as an adjunct professor in University of Saskatchewan and Vanderbilt University. Dr. Tao has taught mechanical engineering courses and conducted research related to refrigeration efficiency, material processing, space application, and electronic cooling. He has a total of 41 refereed journal publications, he holds a patent for a 3-D network micro heat sink, and has received more than 3.3 million dollars of external research funding as a PI and additional 8.1 million dollars as a Co-PI. Dr. Tao is an expert in transport phenomena in multiphase media, constructal microchannel heat exchangers, NPCM enhanced heat transfer, low temperature heat transfer, alternative energy utilization and energy conservation in buildings, and engineering education. He is also an honorable member of PI Tau Sigma (Mechanical Engineering Honor Society).

Gail M. Hollander
Asst. Professor, Department of International Relations
University of Iowa, Ph. D.

Assistant to Associate

Gail Hollander has been broadly trained in human geography, pursuing a wide range of research questions on human-environment relations. Dr. Hollander earned her Ph.D. in Geography at The University of Iowa in 1999, where she was an Iowa Fellow. As a doctoral student at the University of Iowa, she used urban theory to investigate rural spaces. This provided the theoretical underpinning for her most extensive and sustained research to date, a study of the political economy of landscape transformation in the sugar-producing region of south Florida. Dr. Hollander's book, *Raising Cane in the 'Glades: The Global Sugar Trade and the Transformation of Florida* is forthcoming from the University of Chicago Press. Related findings from her Everglades research have been published in leading geography journals, such as *Political Geography* and *Economic Geography*. In addition to the Iowa Fellowship, this research was supported by a Florida International University Research Grant. Her new research initiative is a transnational study of perceptions of climate change and impending resource scarcity as related to agricultural innovation, particularly as it relates to the European Union's agricultural trade policies. She recently published on this new research, analyzing the rise of "multifunctionality" in the European Union and its implications for agrarian cultural landscapes and livelihoods. Dr. Hollander is a PI on a proposal to conduct workshops about systemic change in the Everglades, currently under review at the National Science Foundation. She has been an assistant professor in the Department of International Relations since August 2000. She was Visiting Assistant Professor from August 1999 to July 2000 and Visiting Instructor from August 1997 to July 1999. As a member of the American Association of Geographers, she has served as a National Committee Board Member and as Awards Coordinator for the organization's Geographic Perspectives on Women specialty group.

Richard Chisik
Asst. Professor, Department of Economics
Northwestern University, Ph.D.

Assistant to Associate

Richard Chisik graduated with a B.A. in English Literature from Michigan State University and then went on to receive a M.A. and a Ph.D. in economics from Northwestern University. He was an assistant professor in the department of economics at the University of Connecticut from August 1997 until August 2000. Since that time he has been an assistant professor in the department of economics at Florida International University. His specialty is international economics and he has been named an associate editor of the *Journal of International Economics*. His primary research interests are in the areas of international trade, foreign direct investment, and economic theory. In particular, he is interested in problems in international economics that also have important implications for how individuals and firms interact within an economy. One research focus has been to analyze the dynamics of country of origin reputations for quality and the ability of trade policy and of foreign direct investment to ameliorate a bad reputation. Other research interests include analyzing the ability of different voting mechanisms to produce desirable outcomes, and analyzing how international trade agreements and international tax treaties evolve over time. In the latter, he has concentrated on the effect of irreversibilities on economic integration and gradualism, and on how asymmetries affect the dynamics of taxes on trade and on foreign direct investment. He has also used this framework to analyze the stability and welfare effects of regional trade agreements. Dr. Chisik's research has been published in top ranked journals such as the *Journal of International Economics*, the *Journal of Public Economics*, the *International Economic Review*, *Economic Inquiry*, and *Social Choice and Welfare*. He has been an invited speaker at many economics departments, conferences and symposiums..

Akinwumi O. Oundiran
Asst. Professor, Department of History
Boston University, Ph.D.

Assistant to Associate

Akin Ogundiran received his Ph.D. in Archaeological Studies at Boston University (2000) with concentrations in African studies, historical archaeology, cultural resource management, and comparative world civilizations. He previously studied at University of Ibadan (M.Sc., 1991) and Obafemi Awolowo University (B.A., First Class Honors, 1988), both in Nigeria. He began his professional career at Florida International University in 2001 as an Assistant Professor of History. At different times between 1988 and 1999, he was appointed as a tenure-track lecturer at three Universities in Nigeria: Ambrose Alli University, Delta State University, and University of Benin. He also taught at Boston University. In addition, he has worked in the media as a News Editor for the Broadcasting Corporation of Oyo State, Nigeria (1991-92). In 1995-98, he was appointed as Staff Archaeologist of the Afro-American Museum of History in Boston, responsible for public archaeological outreach, management of the Smith School of archaeological artifacts, and for conducting archaeological excavations at African-American sites in Boston area. Dr. Ogundiran's methodology is interdisciplinary, cutting across the traditional boundaries of history, archaeology, and cultural anthropology. Broadly, his research has focused on how the cultural institutions of West African societies have been transformed due to global encounters. His current research centers on the impact of the Atlantic commerce on social and cultural transformations in the Bight of Benin (West Africa) between 1500 and 1850. Dr. Ogundiran has received grants for his current and previous research from the Provost/ FIU Foundation Research Award, Social Science Research Council, Wenner-Gren Foundation for Anthropological Research, National Endowment for the Humanities, and the National Science Foundation-Missouri Research Reactor Center. He is the author of *Archaeology and History in Ilare District* (Cambridge Monograph in African Archaeology series, 2002) and editor of *Precolonial Nigeria* (Africa World Press, 2005). His next book (co-edited with Toyin Falola), *Archaeology of Atlantic Africa and African Diaspora*, is forthcoming later in 2006 from Indiana University Press. He has also authored over a dozen research articles and essays. Dr. Ogundiran is the coordinator of the Certificate in African Studies, program coordinator of the South Florida Archaeological Institute of America, Founding Secretary/Treasurer of Yoruba Studies Council, Consultant to the ABC-CLIO *Encyclopedia of World History*, and member of the editorial advisory board of *Journal of Archaeological Association of Nigeria*. He received the 2006 University of Texas-Austin Africanist Award for Research Excellence.

B.M. Golam Kibria
Asst. Professor, Department of Statistics
University of Western Ontario, Ph.D.

Assistant to Associate

Golam Kibria received his M. Sc. degrees in statistics from Jahangirnagar University, Bangladesh and Carleton University, Canada and Ph. D. degree in statistics from the University of Western Ontario, Canada. Dr. Kibria has been working as a full-time tenure-track assistant professor in the department of statistics at FIU since August 2000. Prior to joining at FIU, he was working as an assistant professor in the department of statistics, University of British Columbia (UBC), Canada and in the department of statistical and actuarial science at the University of Western Ontario (UWO), Ontario, Canada. He has also worked as a lecturer in the department of statistics at Jahangirnagar University, Dhaka, Bangladesh. Dr. Kibria has jointly supervised two Ph. D. students in the department of civil and environmental engineering at FIU. Dr. Kibria has 41 research articles either published or accepted for publication in nineteen different internationally well reputed and peer reviewed statistical journals. These papers represent a broad area of statistical research, including predictive inference, ridge regression, preliminary test and shrinkage estimation, environmental statistics, accident analysis, and applied statistics. His research has wide application in the fields of environmental, physical sciences, transportation engineering and medical sciences. Dr. Kibria is serving as an associate editor for the *Journal of Probability and Statistical Science*. Dr. Kibria is the vice-president of the South Florida Chapter of the American Statistical Association. He is also a member of the Statistical Society of Canada and Life member of Bangladesh Statistical Association, as well as an elected member of International Statistical Institute (ISI) and an elected Fellow of the Royal Statistical Society (FRSS).

Félix E. Martín
Asst. Professor Department of International Relations\
Columbia University, Ph. D.

Assistant to Associate

Félix E. Martín is Assistant Professor of International Relations at Florida International University. He previously taught at Hunter College of the City University of New York after receiving his B.A. from Saint Peter's College in 1979, his MA from the University of Chicago in 1981, and his Ph.D. from Columbia University in 1998. He specializes in Inter-American and Iberian Studies in the security and political economic areas. He spent the 2000-2001 academic year in Madrid, Spain at the Universidad de Alcalá de Henares, as a Senior lecturer and Researcher with a Fulbright Fellowship. He co-edited *Latin America's Quest for Globalization: The Role of Spanish Firms* (London: Ashgate, 2005); and authored *Militarist Peace in South America: Conditions for War and Peace* (New York: Palgrave, 2006) forthcoming July 2006. He is presently working on two book projects on US-Spanish-Latin American Economic Relations and on a cross-national comparative analysis of the Militarist Peace hypothesis and its effect on the causes of war and peace in peripheral world regions. He serves in the Editorial Board of *Revista Quórum*. He was the Guest Editor of *Hemisphere Magazine*, Latin American and Caribbean Center, FIU for Vol. 16, Winter 2005, and has served as a manuscript reviewer for the *Journal of Inter-American Studies and World Affairs*, the *International Migration Review*, and book manuscript reviewer for Ashgate Press.

Daniel Guernsey
Asst. Professor Department of Art and Art History
University of Wisconsin- Madison, Ph.D.

Assistant to Associate

Daniel Guernsey earned his Ph.D. in art history at the University of Wisconsin-Madison with a minor in European intellectual history. He teaches courses on eighteenth- and nineteenth-century European art, twentieth-century modernism, and contemporary art. He has a joint appointment with the Humanities Program at FIU, teaching courses on art and politics and European intellectual history. Guernsey's research examines the relation between art, politics, and historical representation in European art from 1777 to 1855 by focusing on the theme of "universal history," or the philosophy of history. His work addresses the ways paintings—mostly mural programs—produced in England and France expressed the notion of "civilization" in either linear or cyclical histories of progress and decline. In the summer of 2002, he received a stipend from the NEH to participate in a six-week seminar held in Cambridge, England and conduct further research on his book. His forthcoming book, *The Artist and the State, 1777-1855: The Politics of Universal History in British and French Painting*, will be published by Ashgate press, London (Studies in Visual Culture Series). Guernsey's publications also include essays on Gustave Courbet in *Picturing Children: Constructions of Childhood from Rousseau to Freud*, Marilyn Brown, ed. (Ashgate 2002) and in *Nineteenth-Century Studies* (forthcoming, 2006). He also has a forthcoming essay on James Barry's mural program, *The Progress of Human Knowledge and Culture (1777-1784)* in *The Political Economy of Art*, Julie Codell, ed. (University of Delaware Press). He is the author of "Barry's Bossuet in *Elysium: Catholicism and Counter-Revolution in the 1790s*." Professor Guernsey is currently involved in organizing the Nineteenth-Century Studies conference that will take place in Miami in March, 2008.

Sakhrat Khizroev

**Associate Professor, Department Electrical & Computer Engineering
Carnegie Mellon University, Ph.D.**

Sakhrat Khizroev received BS in Quantum Electronics and Applied Physics from Moscow Institute of Physics and Technology (MIPT) in 1992, MS in Physics from the University of Miami in 1994, and PhD in Electrical and Computer Engineering from Carnegie Mellon University (CMU) in 1999. During the last three years, he has been associate professor at Florida International University (FIU). Before joining FIU, he spent over three and a half years as a research staff member with Seagate Research, and one year as a pre-doctoral intern with IBM Almaden Research Center. Among his technology honors are two IBM Doctoral Fellowships, Key Employer Award and 29 Technology Achievement Awards from Seagate Technology. Dr. Khizroev has over 25 granted, 10 pending, and 110 provisional patents with IBM, Seagate, CMU, and FIU. He has authored/co-authored over 60 refereed papers, one book and three contributions to engineering handbooks in the emerging field of Spintronics and the fields of nanomagnetic devices as well as next generation information storage and memory technologies. He has co-founded and co-chaired several major annual IEEE conferences including North American Perpendicular Magnetic Recording Conference (NAPMRC) and Conference on Nanoscale Devices and System Integration (NDSI). Dr. Khizroev has served as Associate Editor for *IEEE Transactions on Nanotechnology* and a guest editor for *Nanotechnology* of the Institute of Physics and *IEEE Transactions on Magnetics*. Today, the focus of his research is in the sub-area of Nanotechnology dedicated to the development of the emerging field of Spintronics with the goal to develop fully-spin-based memory and logical computing devices for various consumer, military and health applications. His research has been supported by National Science Foundation (NSF), U.S. Air Force Office of Scientific Research (AFOSR), Hitachi, Motorola, and Seagate. Currently, he is the principal investigator of externally funded research grants of over \$1.5 M. Dr. Khizroev is a Senior Member of IEEE.

A. Gray Read

Asst. Professor, School of Architecture
University of Pennsylvania, Ph.D.

Assistant to Associate

Dr. A. Gray Read holds a professional Masters degree and a PhD. in Architecture from the University of Pennsylvania. She is licensed to practice architecture and was principal of a design firm in Philadelphia until 1995. Her academic research addresses the history of urban architecture, focusing on how the buildings shape urban identity and social life. She has published several articles on the topic and given numerous presentations at conferences and other universities. Dr. Read's forthcoming book, *The Poetics of Measure in Philadelphia's Architecture* to be published by Edwin Mellen Press in 2006 investigates multiple historical systems of measure in the old city of Philadelphia to ask how architectural scale defines the activities of daily life within a symbolic structure. Her current work draws on theatre and set design to address strategies for urban social space, using both historical analysis and creative experimentation. Through documentary research, she discovered the unrecognized work of a group architects in Paris in the 1920s and 30s who modeled the inherently theatrical qualities of urban situations in the design of sets and performance spaces. Building on their strategies, she has begun a series of collaborative exercises investigating spatial design through theatrical improvisation. She is preparing a book on the historical research and has published one chapter as an article in the *Journal of Architectural Education*, the leading journal in the field. Dr. Read teaches Architectural History, Theory, and Design Studio.

Gueo Grantcharov
Asst. Professor Department of Mathematics
Sofia University- Bulgaria, Ph.D.

Gueo Grantcharov received his PhD in mathematics in 1996 from University of Sofia, Bulgaria. He works in the field of complex and Riemannian geometry, area in the core of pure mathematics but also basic for theoretical physics. He had an assistant professor position in Sofia University from 1992 to 1996. After the completion of his PhD he was appointed as a visiting assistant professor in the Mathematics Department of University of California, Riverside in 1998. From 2000 until 2002 Grantcharov was a post-doctoral fellow at University of Connecticut. He arrived at FIU in 2002 as assistant professor. Grantcharov is an author of more than 20 published papers in prestigious international journals in mathematics and mathematical physics. He has an NSF research grant. Dr. Grantcharov has served as a reviewer for the *Zentralblatt Math* and a referee for high quality journals such as *Mathematical Research Letters*, *International Mathematical Research Notes*, *Journal of Geometric Analysis*, *Journal of Geometry and Physics*, *Rocky Mountain Journal of Mathematics*, and *Indian Journal of Pure and Applied Mathematics*. He is a member of the leading U.S. academic society, American Mathematical Society, and also has delivered talks in many national and international conferences. At FIU Dr. Grantcharov has served as one of the organizers of the Math Circles study group for talented High School students. Together with professors T. Draghici and M. Yotov he co-organizes the FIU Math Team for the very challenging Putnam National Mathematics competition, where FIU ranked 28 in 2003.

Ellen Thompson
Asst. Professor, Department of English
University of Maryland at College Park, Ph.D.

Assistant to Associate

Ellen Thompson is an Assistant Professor of Linguistics in the English Department at Florida International University. She was an Associate Professor of Linguistics at the University of Puerto Rico before coming to F.I.U. in the Fall of 2000. Dr. Thompson received a B.A. in English from the University of Massachusetts at Boston in 1990, and a Ph.D. in Linguistics from the University of Maryland in 1996. Dr. Thompson's primary research interests are in syntactic theory, syntax/semantics interface, and the theory of speech errors. Her research in linguistic theory focuses on investigation of the structure of Universal Grammar, the component of language innate to human beings. In her book, "Time in Natural Language: Syntactic Interfaces with Semantics and Discourse" (Mouton de Gruyter 2005), Thompson argues that although the structural and morphological reflexes of temporal interpretation do not seem to be overtly evident in languages such as English in the way that they apparently are in languages such as Irish and Russian, English does in fact show the same systematic structural and semantic generalizations regarding the interpretation of time as other languages. Thompson's research in spontaneous speech errors contributes to this project by examining the patterns of errors exhibited by speakers of different languages. Thompson's research has been published in leading linguistics journals, including *Linguistic Inquiry*, *Natural Language and Linguistic Theory*, and the *Journal of Linguistics*, as well as in books, working papers and proceedings. She teaches courses in syntactic theory, morphology, semantics, and speech errors.

Anthony Miyazaki
Department of Marketing
University of South Carolina, Ph.D.

Assistant to Associate

Anthony Miyazaki received his doctorate in marketing (with a cognate in Psychology) in 1996 from the University of South Carolina. Prior to obtaining his doctorate, Dr. Miyazaki held marketing positions in both consumer and business-to-business settings, working in banking and for an industrial processing services firm. He also holds a Bachelor of Science degree in marketing from the University of Utah which he received in 1990. Dr. Miyazaki joined the faculty as an assistant professor at FIU's College of Business Administration after eight years on the faculty at the University of Miami where he taught strategic marketing management, market analysis, and strategic planning at the undergraduate, MBA, and executive MBA levels. He has continued his dedication to excellence in teaching at Florida International University, being one of the first to teach in the College of Business Administration's hybrid learning program which combines in-class learning with online learning to give students more flexibility in scheduling as well as a more interactive one-on-one interface with their professors. Dr. Miyazaki's academic research, conducted using a variety of methodological approaches, has focused primarily on three areas: pricing management and pricing perceptions, decision making under conditions of risk and uncertainty, and online consumer privacy. He has published articles in academic journals, 13 of those are in journals designated as "Premier" (highest quality) by the FIU College of Business Administration. His articles have garnered over 130 citations as of March 2006 and have appeared in the Congressional Record (in conjunction with the National Gambling Impact Study). Dr. Miyazaki has significant consulting experience with both for-profit and non-profit organizations, with a focus on marketing research, strategic planning, and marketing information systems. Notable projects include research and strategic planning work involving BellSouth, Kodak, South Florida Blood Banks, KHI Engineering, and a National Geographic affiliate group.

Sandra Gracia Jones
School of Nursing
Barry University, Ph.D.

Assistant to Associate

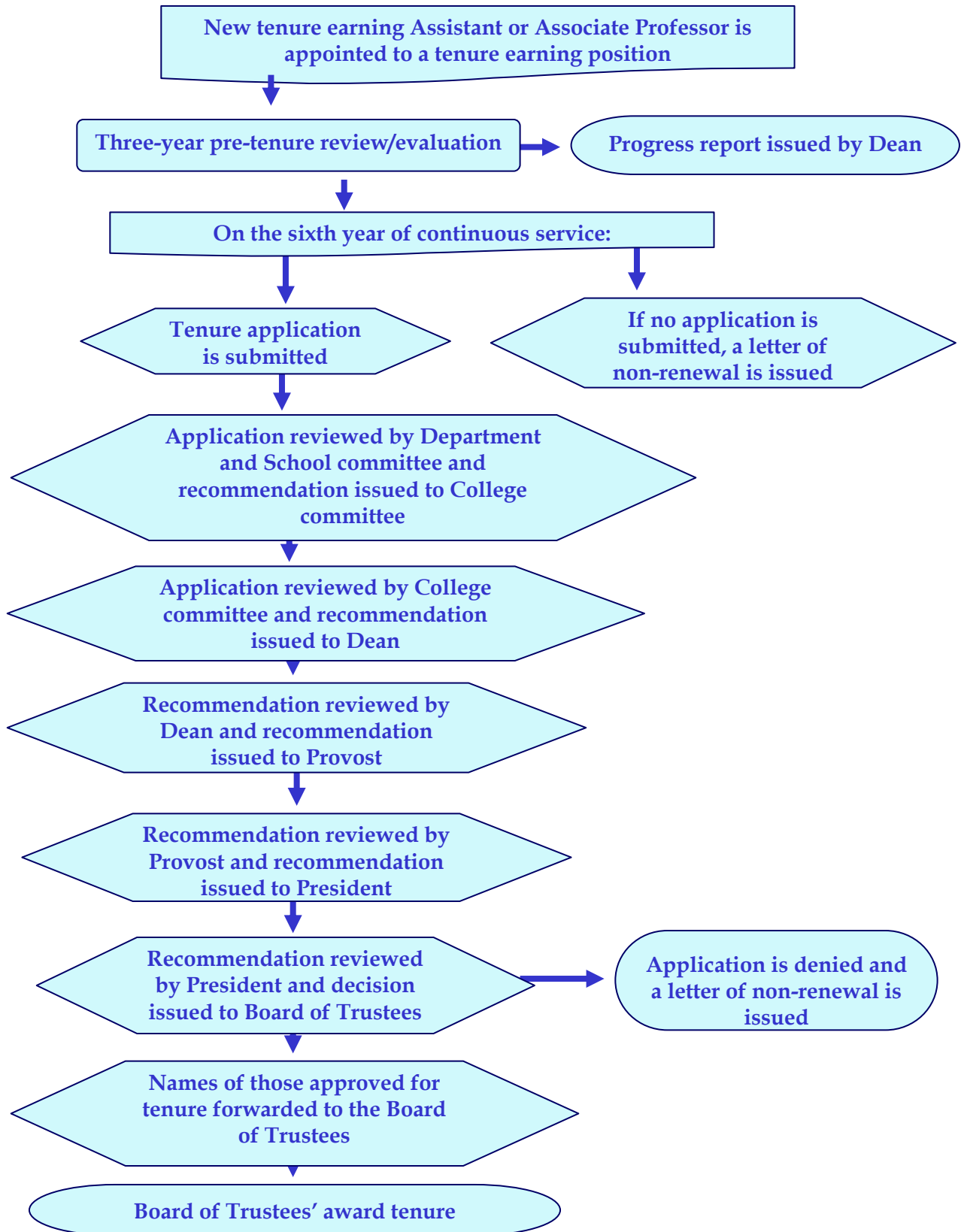
Sandra Gracia Jones received her diploma in nursing from St. Luke's Hospital School of Nursing, New Bedford, Massachusetts, in 1971; BSN, University of Massachusetts Dartmouth, 1974; Master's in Adult Education, Florida International University, 1981; MSN, University of Miami School of Nursing, 1990; post-MSN Adult Nurse Practitioner, Florida International University School of Nursing; and her PhD in Nursing from Barry University School of Nursing, Miami Shores, 2000. Dr. Jones worked as a relief charge nurse at St. Anne's Hospital, Fall River, MA (1971-1974), and as a team leader, nurse manager, nurse educator, education coordinator, care manager and HIV/AIDS/TB clinical nurse specialist/nurse practitioner at Mount Sinai Medical Center, Miami Beach, FL, (1974-1999). She taught as an assistant professor at Barry University before joining FIU in 2000 after completing her PhD. Dr. Jones has also worked as an adult nurse practitioner in a private physician HIV/AIDS practice. Her research and publications have focused on the care of persons infected and affected by HIV/AIDS. For the past 8 years she has served on the Board of Directors of Mothers Voices South Florida, a not-for-profit community-based organization which provides educational programs about HIV and safer sex practices. Dr. Jones was honored in 2005 by the Greater Miami Chamber of Commerce by selection as one of three finalists in the Health Care Hero, Nurse category. She is the first and only School of Nursing faculty member to be recognized as a finalist in this category. In 2003, Dr. Jones was designated by the American Nurses Association as a Nurse Expert in HIV/AIDS. In 2004, she was selected for induction as a Fellow of the American Academy of Nursing—the highest professional honor in nursing. Dr. Jones's research interest is now focused on HIV prevention. She is the Principal Investigator for a 3-year project funded by the Office on Women's Health, Department of Health and Human Services, for \$207,000, to develop and implement an HIV prevention program for Hispanic female college students. A secondary goal of the project is to prepare nursing students to be community leaders in HIV prevention. Dr. Jones' SENORITAS project (Student Education Needed in Order to Reduce Infection and Transmission of AIDS/HIV and STDs) was selected as one of six projects highlighted at the 2005 CDC HIV Prevention Conference.

David Eitle
School of Policy and Management—Criminal Justice
Indiana University, Ph. D.

Assistant to Associate

David Eitle received his B.A. in criminology and an M.A. in sociology from the Ohio State University, and his PhD in sociology from Indiana University at Bloomington, one of the premier sociology graduate programs in the United States. During his career, Dr. Eitle has been involved in a number of sponsored research projects, including serving as a research associate on a project funded the National Institute of Justice which examines the federal enforcement of securities violations and more recently on a study funded by the National Institute on Drug Abuse which examines the risk and protective factors associated with substance abuse problems and deviance among young adults. He also served as a research analyst with the State of Indiana, Family and Social Services Administration, in their Division of Family and Children. He is a member of the American Sociological Association, the American Society of Criminology, and is a reviewer for several major journals in criminology, sociology, and criminal justice. Dr. Eitle is also a member of National Institute of Justice Consultant Base. He has twenty-five (25) peer-reviewed publications, along with additional book chapters and reports. His articles have been published in first-tier, prestigious journals in sociology, criminology, and criminal justice. Dr. Eitle's research focuses on the relationship between racial and economic stratification and the patterning of violent crime and the formal social control responses to such crime; the relationship between stress exposure and deviant behavior among adolescents and young adults, and the role of school organizational and cultural factors in shaping school violence, disorder, and delinquency. His work examining school organizational factors and their role in understanding juvenile delinquency and school violence has been recognized nationally, and some of his research in this area has been funded by the prestigious Spencer Foundation.

Tenure and Promotion Process



This page intentionally left blank.

**THE FLORIDA INTERNATIONAL UNIVERSITY
BOARD OF TRUSTEES
ACADEMIC POLICY AND STUDENT AFFAIRS COMMITTEE**

12 JUNE 2006

SUBJECT: TENURE AS CONDITION OF EMPLOYMENT NOMINATIONS

PROPOSED COMMITTEE ACTION:

Recommend Board adoption of the following Resolution:

WHEREAS each board of trustees is authorized to establish the personnel program for all employees of the university including tenure,

WHEREAS the University President is recommending the granting of Tenure as a Condition of Employment for three (3) nominees listed in Exhibit "C",

THEREFORE BE IT RESOLVED that the Florida International University Board of Trustees approves the granting of Tenure as a Condition of Employment to the three individuals listed in Exhibit "C" based on the recommendations of the University President.

BACKGROUND INFORMATION:

STATUTORY AUTHORITY:

Resolution of the Florida Board of Governors, dated January 7, 2003.

Resolution delegating and delineating powers of local boards of trustees, states in part,

(19)(a) Each board of trustees shall establish the personnel program for all employees of the university, including the president, pursuant to the provisions of chapter 1012 and, in accordance with rules and guidelines of the Florida Board of Governors, including: compensation and other conditions of employment, recruitment and selection, non-reappointment, standards for performance and conduct, evaluation, benefits and hours of work, leave policies, recognition and awards, inventions and works, travel, learning opportunities, exchange programs, academic freedom and responsibility, promotion, assignment, demotion, transfer, tenure and permanent status, ethical obligations and conflicts of interest, restrictive

covenants, disciplinary actions, complaints, appeals and grievance procedures, and separation and termination from employment.

EXHIBITS/SUPPORTING DOCUMENTS:

- EXHIBIT “C” – TENURE AS A
CONDITION OF EMPLOYMENT
NOMINEES
- ATTACHMENT 3 – TENURE AS A
CONDITION OF EMPLOYMENT
NOMINEES’ BIOS

FACILITATOR/PRESENTER:

- RONALD BERKMAN
- DOUGLAS WARTZOK

Exhibit "C"

Florida International University						
2005 - 2006						
Tenure as a Condition of Employment Nominations						
Names of Candidates	Department	Gender	Ethnicity	Current Rank	Proposed Rank	Comments
School of Architecture						
College of Arts and Sciences						
Jeffrey Bernstein	Economics	M	W	Prof. (9001)	Prof. (9001)	
College of Business Administration						
William G. Hardin, III	Finance	M	W	Assoc. (9002)	Assoc. (9002)	
Sharon Lasser	Accounting	F	W	Assoc. (9002)	Assoc. (9002)	

Ethnicity: I=American Indian or Alaskan Native; A=Asian or Pacific Islander; B=Black, not Hispanic; H=Hispanic; or W=White, not Hispanic. **TACOE**=Tenure as a condition of employment.

Attachment 3

THE FLORIDA INTERNATIONAL UNIVERSITY
BOARD OF TRUSTEES

2005-2006

Tenure as a Condition of Employment Recommendations
Biographies

Jeffrey Ian Bernstein
Professor, Department of Economics
University of Western Ontario, Ph.D.

TACOE

Jeffrey Bernstein joins FIU from Carleton University, where he held the Chancellor's Professorship of Economics. He earned his B.A. in Economics from Sir George Williams University in Montreal, and his Ph.D. in Economics from the University of Western Ontario. Professor Bernstein has additionally held appointments at the University of Guelph, Concordia University, and McGill University. Moreover, Professor Bernstein is a research associate of the National Bureau of Economic Research; a member of the Services Advisory Committee of Statistics Canada; associate editor of the *Journal of Productivity Analysis*; head of the Canadian Federal Government Economics Internship Program; a member of the editorial committee of the *International Productivity Monitor*; a member of the editorial board of the *Journal of Regulatory Economics*; and a member of the Canberra II group of the OECD. Previously, Professor Bernstein served as a member of several research advisory Committees for the Center for the Study of Living Standards in Ottawa, and for Statistics Canada; as chair and member of the Economics Committee of the Canadian Social Sciences and Humanities Research Council; as advisor on production and taxation to the World Bank, and as director of the Center for Quantitative Social Sciences, Ottawa. He was also a member of the Airlines Advisory Board, and the Economic Council of Canada; among other honors and responsibilities. Dr. Bernstein is an expert on the measurement of intangible capital, productivity measurement, regulation of industries, and industrial organization. He has published over 60 articles and book chapters, several books, and many monographs and reports. He has also been the PI of 30 competitive research grants.

Sharon L. Lassar
Associate Professor, School of Accounting
University of Southern California, Ph.D.

TACOE

Sharon Lassar, Ph.D., CPA earned her Ph.D. at the University of Southern California, her Master of Taxation at Bentley College in Waltham, Massachusetts, and her Bachelor's in Accounting from West Virginia University. Most recently she was a tenured associate professor at Florida Atlantic University. Dr. Lassar was selected as the 2005 "Educator of the Year" by the American Woman's Society of Certified Public Accountants. She also received the 2005 Deloitte/American Taxation Association Teaching Innovations Award for her case study. Dr. Lassar's tax expertise is recognized on a national level. She has served on the Taxpayer Advocacy Panel which works to improve Internal Revenue Service responsiveness to taxpayer needs and to monitor the quality of taxpayer service. In Fall 2004, Dr. Lassar was appointed to the Tax Practice and Professional Responsibilities Committee of the American Institute of Certified Public Accountants (AICPA). The committee recently proposed a new Statement on Standards for Tax Services that, when implemented, will impact the practice of the 340,000 members of the AICPA. She also serves as a director for the Florida Institute of Certified Public Accountants (FICPA) Broward Chapter, and for the American Woman's Society of CPAs South Florida Chapter. She is a frequent presenter of Continuing Professional Education. She is also a member of the Accounting Shows Committee of the FICPA.

William G. Hardin, III
Associate Professor, Director, Real Estate Program, College of Business
Administration
Georgia State University, Ph. D.

TACOE

William G. Hardin III most recently held the Robert W. Warren Chair of Real Estate at Mississippi State University (MSU) where he was a tenured faculty member in the Finance and Economics. He coordinated the MSU College of Business and Industry's real estate and construction management programs which have a combined enrollment of approximately 180 students. Prior to joining the faculty at Mississippi State University, Dr. Hardin was an Assistant Professor of Finance at Morehouse College in Atlanta, Ga. He holds a Doctorate of Business Administration in Real Estate from Georgia State University (1996), a Master in Real Estate degree from Georgia State University (1992), and a Master in International Business Studies degree from the University of South Carolina (1984). He holds a BA from the University of North Carolina – Chapel Hill (1982). Dr. Hardin has an extensive publication record in the top real estate journals. Dr. Hardin is Co-Editor of *Journal of Real Estate Practice and Education*, and is an elected member of the Board of Directors of the American Real Estate Society. He also serves on the Editorial Review Board of *The Appraisal Journal*. Four of his papers have won best manuscript awards at the annual American Real Estate Society meetings. Dr. Hardin worked for Bank of America predecessor institutions for approximately nine years. He was responsible for developing and maintaining asset portfolios in the International Division and Real Estate Banking Group. Dr. Hardin has also provided consulting services to the real estate community and developed real property. He has served on the Fannie Mae Mississippi Partnership Advisory Board and was ACOG Envoy to the Portuguese Olympic Team for the 1996 Summer Olympics in Atlanta, Ga.

**THE FLORIDA INTERNATIONAL UNIVERSITY
BOARD OF TRUSTEES
ACADEMIC POLICY AND STUDENT AFFAIRS COMMITTEE**

12 JUNE 2006

SUBJECT: HEALTH AND MEDICAL EDUCATION INITIATIVE

PROPOSED COMMITTEE ACTION:

None. Discussion Item.

EXHIBITS/SUPPORTING DOCUMENTS:

▪ NONE

FACILITATOR/PRESENTER:

▪ RONALD BERKMAN

This page intentionally left blank.

**THE FLORIDA INTERNATIONAL UNIVERSITY
BOARD OF TRUSTEES
ACADEMIC POLICY AND STUDENT AFFAIRS COMMITTEE**

12 JUNE 2006

SUBJECT: STUDENT AFFAIRS REPORTS

PROPOSED COMMITTEE ACTION:

None. Discussion Item.

REPORTS

- A. STUDENT AFFAIRS UPDATE
- B. HOUSING
- C. HEALTH SERVICES

EXHIBITS/SUPPORTING DOCUMENTS:

- DIVISION OF STUDENT AFFAIRS REPORT,
JUNE 2006

FACILITATOR/PRESENTER:

- ROSA JONES

This page intentionally left blank.

Florida International University
Board of Trustees
Academic Policy and Student Affairs Committee
Division of Student Affairs – Summary Report
June 2006

INTRODUCTION

The Division of Student Affairs facilitated student participation in the initiatives to gain approval for the medical school. Since February, the Division has had a flurry of activities related to preparing for finals and brining closure to the spring semester. Programs and events have included student government elections on both campuses, awards ceremonies, philanthropies (Dance Marathon), and graduation celebrations. This report will highlight those events and programs, provide an update on construction projects and identify major challenges facing the Division.

SPECIAL PROGRAMS AND STUDENT ACCOMPLISHMENTS

- **American Psychological Association Accreditation:** The Counseling and Psychological Services Center (CPSC) received accreditation at the Spring 2006 meeting of the American Psychological Association Committee on Accreditation. The Center was commended for “the seamless integration of diversity” in training and the “focus on culturally competent care.” The committee also expressed appreciation for the commitment of CPSC staff and the FIU administration to this very worthwhile project. The CPSC is certified for the training and education of professional psychologists.
- **College of Education and Student Affairs:** Thirteen (13) students graduated with their master’s degree in higher education administration as a result of a partnership between Student Affairs and the College of Education. Student Affairs provides assistantships for approximately 35 students matriculating in the masters program in higher education administration.
- **Children Creative Learning Center:** On May 6, 2006, three hundred staff, parents, and present/former students celebrated the 30th Anniversary of the Children’s Creative Learning Center. The first preschooler of the center in 1975, who is now 35, was the speaker at the event.
- **Student Life Awards:** The Division of Student Affairs held its annual Student Life Awards ceremony on April 13, 2006. After receiving nominations from administration, staff, faculty and students, students were rewarded for outstanding achievements in the areas of leadership, service, diversity, spirit and innovation. Taking the time to recognize these "shining stars" is always one of the highlights of the year.

- **Alternative Spring Break:** The ASB completed its 12th year at FIU. For the 2005-2006 academic year, there were a total of 13 sites. This included the fall and winter projects to Biloxi, MS Hurricane Relief Gulf Coast Fall Break and Nicaragua December of Dreams Winter Break. The spring sites are as follows: Blue Mountain Project: Kingston, Jamaica (2 sites in one location), Unitarian Universalist Service Committee: Syracuse, NY, Our Daily Bread Catholic Charities: Baltimore, MD, Rivington House: New York City, NY, Cumberland Trails: Crossville, TN, Southern Appalachian Labor School: Kincaid, WV, Operation Breakthrough: Kansas City, Missouri, Martha's Table: Washington D.C., Hungry Mother State Park: Marion, VA, and IBHS Bangkok site. A total of 183 students participated for the entire year in our Alternative Breaks program completing 8,144 combined hours of services for fall, winter, and Spring Breaks.
- **Service Learning:** The Center for Leadership and Service (CLS) worked with 14 faculty members and instructors on service-learning initiatives and/or support in 38 course sections from 6 different academic departments.
- **Children's Creative Learning Center** has established another partnership with the College of Education Office for Field Experience starting summer 2006 session, to provide support and resources in the area of service-learning opportunities and alternative service sites for their students. All students in the College of Education are required to complete service hours as part of the course requirement.
- **Dance Marathon:** Dance Marathon completed its 9th year at FIU raising \$80,408.60 for Miami Children's Hospital. Over 175 Registered Dancers & Moralers participated. Media coverage included Y-100, Channel 10, NBC 6, Telemundo, and Univision.
- **FIU Relay for Life:** Relay for Life launched its program on April 8 in the football stadium. The event involved 51 teams of students, staff, faculty, and community members. An estimated 2,000 people participated throughout the overnight event. Over \$63,000 was raised for the American Cancer Society. A committee of FIU students organizes the FIU Relay.
- **Leadership Summit:** The 3rd Annual Student Leadership Summit was held in February at the Biscayne Bay Campus. The 130 students attending the Summit participated in 15 different workshops offered by faculty, staff, and graduate students. The keynote address provided by Kevin Snyder excited the entire group to stay focused on their goals.
- **Take Back the Night:** In April, at both campuses, the Women's Center, in collaboration with Victim Advocacy, Counseling and Psychological Services, University Police and 11 Greek and other student organizations, hosted FIU's 2nd annual "Take Back the Night" march and rally to promote awareness of sexual assault and violence on college campuses. Approximately 70 students, faculty and staff participated in the march.

- **University Health Services:** Health Services staff hosted, organized and sponsored the Southern College Health Association annual professional conference at the Don Shula Hotel in Miami Lakes on March 23-25, 2006. Over 160 physicians, nurses, psychologists, health educators, and administrators from many colleges and universities in FL, GA, AL, MS., TN., NC, and SC attended, some earning continuing education credits.
- **Educational Talent Search** is completing the first cycle of the four-year grant (\$816,000) from the US Department of Education to implement the FIU-Talent Search Program. This year we submitted three grant proposals (one continuation, two new) to expand the FIU-ETS program. Each grant is valued at \$880,000 over four years; notice of renewal/new awards will be given in July 2006.
- Seven **McNair Fellows** completed their baccalaureate degrees this Spring. The **Ronald E. McNair Post Baccalaureate Achievement Program** awards grants to institutions of higher education for projects designed to prepare participants for doctoral studies through involvement in research and other scholarly activities. One student will be attending the University of California pursuing a PhD in Biomedical Engineering; he received the Chancellor's Award which is one of the highest awards a scholar can receive from the University of California. He was also the only student to graduate from FIU's biomedical degree program with a 4.0 GPA. The other two PhD McNair fellows are biology graduates, both of whom were accepted into Penn State and University of Pittsburgh biology PhD programs respectively. The remaining McNair graduates have been accepted into Master's degree programs at FIU.
- The **FIU Radio Station, Radiate 88, WRCD 88.1** was voted "Miami's Best Radio Station" by the local press. The recent installation of the new transmitter will provide broader reception throughout the county.

CONSTRUCTION PROJECTS and HOUSING OCCUPANCY

- **Lakeview Housing:** The project (825 beds) is on schedule to open August 15, 2006. Turner Construction is executing an accelerated schedule to overcome construction delays associated with hurricanes.
- **Housing Applications:** Applications are up substantially for fall semester 2006, from 682 in May 2005 to 957 in May 2006. Presently, an average of 75 new applicants are received each week. Housing experienced a new record for fall term sign-up with over 1154 resident students renewing housing contracts for fall term 2006.

CRITICAL ISSUE

- **Student Health Insurance:** Providing affordable health insurance for both domestic and international students is a critical issue. Over 30% of FIU students are uninsured or underinsured. Florida Code mandates health insurance for all

international students. Over the last five years, costs have escalated causing financial hardship for international students. During the 2004-2005 the annual premium rate was \$994 per student. The previous year (2003-2004), the annual cost was \$766. This year's rate (2005-2006) is \$1444 with next year's rate projected to be 16% higher than this year's rate. FIU's loss ratio has been very high due to several catastrophic illnesses and accidents. This is a statewide problem at higher education institutions. Efforts to "collaborate" with other institutions to secure "group rates" are being explored.

**THE FLORIDA INTERNATIONAL UNIVERSITY
BOARD OF TRUSTEES
ACADEMIC POLICY AND STUDENT AFFAIRS COMMITTEE**

12 JUNE 2006

SUBJECT: ACADEMIC AFFAIRS REPORTS

PROPOSED COMMITTEE ACTION:

None. Discussion Item.

REPORTS

- A. GRADUATE REPORT – STEPHAN MINTZ
 - B. UNDERGRADUATE REPORT – CORINNE WEBB
 - C. ACCOUNTABILITY MEASURES (BOG) REPORT – CORINNE WEBB
-

EXHIBITS/SUPPORTING DOCUMENTS:

- A. GRADUATE REPORT
- B. UNDERGRADUATE REPORT
- C. ACCOUNTABILITY MEASURE (BOG) REPORT

FACILITATOR/PRESENTER:

- RONALD BERKMAN

This page intentionally left blank.

**Florida International University
Board of Trustees
Academic Policy and Student Affairs Committee
Academic Affairs Report: University Graduate School
May 22, 2006**

1. Summer 2006 Enrollment (see Table 1. Summer FTE)

- Based on data from May 19, 2006 full time equivalent enrollments (FTE) are up 12.1 % from the 2005 summer term.
- The graduate headcount for Summer 2006 is 4,506. This represents an increase of 800 or 22% as compared to Summer 2005.

2. International Graduate Student Applications and Admissions (see Tables 2 and 3)

- There has been an ongoing interest on the part Board of Trustees and the Academic Policy and Student Affairs Committee concerning the effect of post 9/11 security measures on FIU's international graduate student enrollment. This enrollment is crucial to the STEM fields (Science, Technology, Engineering and Mathematics) particularly at the doctoral level. The Council of Graduate Schools which is a national organization representing all of the major graduate programs in the United States surveys 450 graduate programs on a regular basis provides figures on applications, admissions, and enrollment for first time international graduate students. They have reported that STEM graduate enrollment has been falling since 2001. A comparison of Fall 2003 to Fall 2004 data showed that applications fell 28 %, admissions fell 18%, and enrollment fell 6%. Recent data published by the Council of Graduate Schools shows that these trends are moderating (see table 2). International graduate admissions fell by 5% from 2004/2005 when compared to the previous academic year. However for 2005/2006 there has been an increase in international admissions of 11%. We should note that this increase is calculated on a much contracted base.
- These trends are reflected in application and admission rates at FIU. From the Fall of 2005 to the Fall of 2006, international applications increased by 13% and international admissions increased by 28%. This increase is much greater than that for domestic students (7% and 6% respectively).

3. Doctoral Degree Production (See Graphs 1 and 2)

- The production of doctoral degrees continues to increase. This is an important indicator of the research level of a university and was used (along with federal grant support) by the Carnegie Foundation in determining FIU's standing as a research university. We are currently listed as Research University/High which is the middle category between Research University, and Research University/Very High.
- The total number of doctorates awarded for the 2005-2006 academic year was 86. This represents an increase of 6 or 7.5% over the number awarded during the 2004-2005 academic year. This continues an upward trend in doctorates awarded which began in the 2001/2002 academic year. Furthermore the percentage of Ph.D.'s over Ed.D.'s has increased generally over the last four academic years and stands at 71% for the 2005/2006 academic year.

4. New Graduate Degree Programs

- There are no new graduate programs to be presented at this time.

**Table 1: Summer FTE Comparison to Point in Time
Data from Previous Year**

College/School	Term	Graduate
Architecture	Summer 2005	8.9
	Summer 2006	9.5
Arts & Sciences	Summer 2005	106.8
	Summer 2006	110.6
Business	Summer 2005	112.1
	Summer 2006	172.8
Education	Summer 2005	157.0
	Summer 2006	157.3
Engineering	Summer 2005	60.0
	Summer 2006	62.4
CHUA	Summer 2005	200.3
	Summer 2006	219.7
Hospitality	Summer 2005	13.5
	Summer 2006	13.2
Journalism & Mass Comm.	Summer 2005	10.4
	Summer 2006	6.7
College of Law	Summer 2005	28.4
	Summer 2006	29.7
Total	Summer 2005	697.3
	Summer 2006	781.9

Difference	84.6
-------------------	-------------

Source: May 22, 2006 Daily Enrollment Report, FIU-Office of Planning and Institutional Effectiveness

Table 2: Percent Change of International Graduate Applications

	Change in Applications 2003-2004	Change in Applications 2004-2005	Change in Applications 2005-2006
International Overall	-28%	-5%	+11%
Country of Origin			
China	-45%	-15%	+21%
India	-28%	-5%	+23%
Korea	-14%	+1%	+3%
Middle East*	+4%	+7%	+4%
Field of Study			
Business	-24%	0%	+7%
Education	-21%	-3%	+3%
Engineering	-36%	-7%	+17%
Humanities and Arts	-17%	0%	+4%
Life Sciences	-24%	-2%	+16%
Physical Sciences	-22%	-2%	+10%
Social Sciences	-20%	-2%	+10%

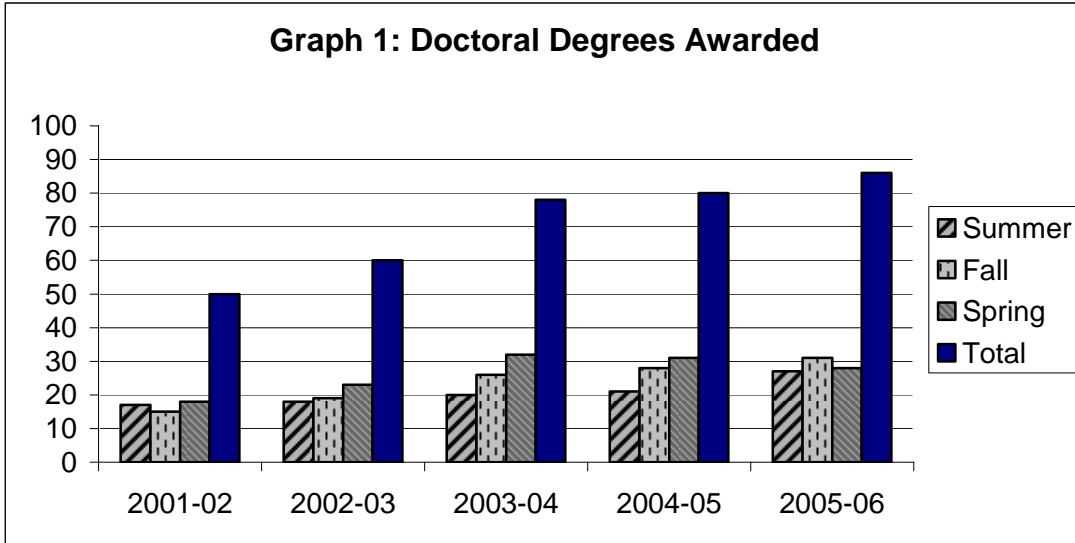
Source: Communicator, Council of Graduate Schools, April 2006. Findings from 2006 CGS International Graduate Admissions Survey Phase I: Applications.

* Middle East: Bahrain, Cyprus, Iran, Iraq, Israel, Jordan, Kuwait, Lebanon, Oman, Palestinian Authority, Qatar, Saudi Arabia, Syria, Turkey, United Arab Emirates, Yemen.

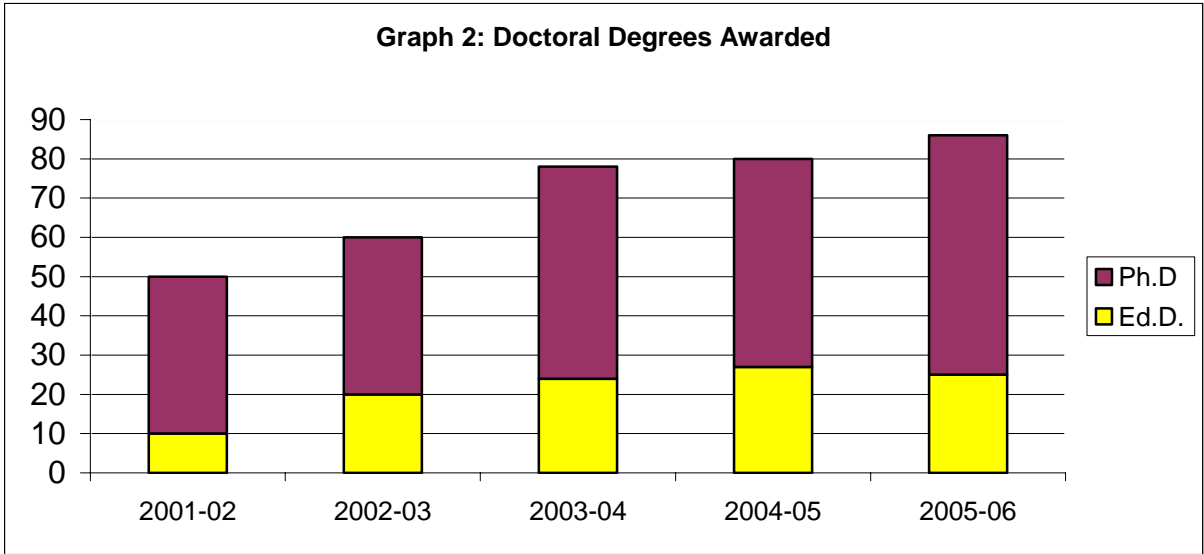
**Table 3: Graduate Applications and Admits
Comparison Report for the Week of
May 22, 2006**

		Fall 05	Fall 06	% change 05-06
Applications	Domestic	2596	2769	7%
	International	1244	1403	13%
	Total	3840	4172	9%
Admits	Domestic	670	709	6%
	International	383	489	28%
	Total	1053	1198	14%

Graph 1: Doctoral Degrees Awarded



	Summer	Fall	Spring	Total
2001-02	17	15	18	50
2002-03	18	19	23	60
2003-04	20	26	32	78
2004-05	21	28	31	80
2005-06	27	31	28	86



	Ed.D.	Ph.D	% of Ph.D. awarded
2001-02	10	40	80%
2002-03	20	40	67%
2003-04	24	54	69%
2004-05	27	53	66%
2005-06	25	61	71%

**Enrollment Services Update
Academic Policy and Student Affairs Report
May 2006**

I. University Enrollment

- As of May 22, 2006, the university student data course file shows 36,002 students enrolled and 9,254 FTEs earned in Spring 2006. This representing a 5.4% increase in enrollment and 7.3% increase in FTEs over Spring 2005.
- As of this same reporting date, the university generated 23,313 FTEs this past summer, fall and spring terms exceeding the 23,142 FTEs funded by the BOG in 2005/06. FTEs generated in the lower division, upper division, grad I and grad II came within, or exceeded, the funding corridor; those generated in law came slightly below the corridor by 2.2%. Overall, the target was exceeded by 171 FTEs.

II. New FTIC and Transfer Students

- The university plans to enroll 9,200 new undergraduate students---4,500 new FTICs and 4,700 new transfers---in the upcoming summer, fall and spring terms in 2006/07.
- As of May 22, 6,477 new FTIC and transfer students have accepted the offer of admission for summer and fall terms.
- Total applications are up by 10% and FTIC applications for Fall 2006, in particular, are up by 22%.

III. Dual Degree Program

Florida International University in partnership with Broward Community College, Miami Dade College, Florida Keys Community College and Palm Beach Community College created a new dual degree program to provide high school applicants to FIU, who are not otherwise admissible to the university as FTIC students, the opportunity to transition to FIU after completion of their associate's degree at a partner institution. Approximately 2,050 students were admitted into the dual degree program in mid May and they will have until June 15th to accept the offer of admission. A special Open House program is scheduled for June 28th at FIU for all students accepting admission into this new program. The primary purpose of this program is to provide students an alternative pathway to transition to the university as upper division students with a completed associate's degree. While enrolled in the community college of their choice, dual degree candidates will receive regular advising and instructional program communications from FIU administrators as well as invitations to various special events and programs at FIU.

IV. Quarterly Report: BOG/BOT Performance Accountability Report-(see report attached)

- The June quarterly report represents the 2006 spring graduates and the 2006 summer/fall returning students. The report also includes the 2006 Summer Action Plan for contacting "off-track" students in the 2001 and 2003 FTIC cohorts as well as the 2003 AA cohort to encourage them to regain progression towards graduation.
- The Four-Year FTIC graduation target expects 20% of the 1,503 students who entered in Fall 2003 to graduate by summer 2007. To date, 505 (33.6%) students are scheduled to graduate within this timeframe as they are on-track or fast-track according to the Grad Xpress program. There are an additional 112 students who likely could graduate by 2007. If all 617 students graduate, the university will graduate 40% of its entering class in four years significantly exceeding its 20% target. The outreach and tracking efforts scheduled for the summer months are critical to ensure this successful outcome.
- The Six-Year FTIC graduation target expects 48% of the 1,297 students who entered in Fall 2001 to graduate by summer 2007. Of special note, after four years 314 students

(24.2%) and after five years 458 students (35.3%) have already graduated. A total of 685 students, from the entering class, are on schedule to graduate by summer 2007 or have already graduated. If all 685 graduate on time, the university will graduate 52% of its entering class in six years, again exceeding its 48% target.

- The Director of Retention, Kandy Malocsay, submitted a program proposal on the Grad Xpress Tracking Program for presentation at the National Student Retention Conference in October 2006. If accepted, this presentation will advance the university's engagement in student retention as a national model for adoption at other institutions.

V. Veterans' Affairs Program

At the March meeting, a presentation was made on the financial benefits available to returning Veterans and the special efforts underway to recruit members of the armed services to begin and/or continuing their higher education program at FIU. Below is a summary of the progress to date on administering these planned efforts.

- **Regional Job Fair:** Approximately 2,000 veterans will be rotating back to the Miami area in April. The Center will host a job fair to assist these men/women in their return to civilian life. FIU has agreed to participate in this job fair to actively recruit and assist these returning veterans. Additionally, FIU plans to participate in the job fairs scheduled later in the year in Panama City and Ft. Walton Beach for returning veterans.
Action to date: The U.S. Southcom/U.S. Coast Guard/Miami Vet Center Job Fair is scheduled for May 25, 2006 at the Metro Dade Fire Fighters Building between 9:00am and 3:00pm. Representatives from undergraduate admissions and Veterans' Affairs will attend this event.
- **Direct Mail Campaign:** While the center staff were unable to provide FIU with the names of active duty personnel and veterans for marketing purposes, they did agree to include FIU promotional materials, recruitment schedules and contact information in an upcoming mailing to their constituents.
Action to date: Undergraduate admissions developed a new logo and email campaign inviting veterans to a special recruitment program on July 15, 2006. This email was dispatched to all veterans, retirees and members separating from active duty contained in the Miami Veterans Center's database.
- **Awareness Program:** The Veterans Administration Center staff requested an opportunity to visit FIU and provide faculty, staff and students with general awareness programs to sensitize the community to the challenges faced by active duty personnel upon returning home. The university registrar will coordinate this engagement during the spring semester.
Action to date: The university registrar and her staff organized this scheduled event for May 18th. Mr. Patrick Murphy, Team Leader, and Mr. Daniel Green, GWOT Counselor, from the Miami Veteran Center, presented the video "Returning Home" and led a discussion on common readjustment issues and outreach support for returning veterans. Approximately 20 faculty and staff attended this event.

Florida Board of Governors Strategic Plan

Assessment of Florida Critical Needs

Florida ranks 45th among the states in per-capita bachelor graduates. The SUS provides 67.6% of the Bachelor's degrees. 55.8% of the Master's degrees, 41.5% of the First Professional degrees and 55.6% of the Doctoral degrees awarded in Florida.

In order to reach the national average in per-capita degrees by 2013, the following annual growth rates would be required in the degrees granted:

Bachelor	3.9%
Master's	3.89%
Doctoral	1.38%
Professional	5.14%
All Degrees	3.88%

Rather than just looking at the total number of degrees that are needed to match the national per capita average, the BOG looked at the specific degrees that would be needed for Florida to attract high technology industry clusters as have Atlanta, Austin, Boston, Chicago, North Carolina's Research Triangle, and California's Bay Area.

A 2001 report to the Workforce Estimating Conference identified baccalaureate degree programs that could be expected to have high demand for at least one of three reasons. These programs either:

- met critical state needs
- were identified by the Advisory Group on Emerging Technologies as being important to continued high-tech industry development in the state; and/or
- had a record of placing graduates in high-wage positions.

The list of degree programs with the number of degrees awarded in 2001-02 included in one of these categories is given in the appendix. The BOG Strategic Plan's goal is that half of all degrees awarded by 2013 be in targeted programs (up from 41% in 2002-2003). To reach this goal, it will require that those programs grow at a rate 40% faster than the average annual growth rate for all programs. This rate of growth for targeted programs also allows for growth, although at a slower rate, in other degree programs.

The two areas identified in the 2001 report to the Workforce Estimating Conference as critical state needs are Health Care and Education.

For the 2004-05 school year, the State Board of Education identified the following subject fields as critical shortage areas in Education:

- Middle and high school level mathematics
- Middle and high school level science
- Reading
- Exceptional student education programs
- English for speakers of other languages (ESOL)
- Foreign languages
- School psychologists
- Technology education/industrial arts

In Health Care, Florida will need 61,000 more nurses in 2020 than are currently being produced. There will also be a need for more graduates in other key patient care positions, such as in Pharmacy and Medical technology. The Board of Governors did not include Medicine as a Health Care area in need of growth because at the time of the Strategic Plan, it had not yet completed its study of the needs for more medical doctors.

See the appendix for the specific degree programs under the Education and Health Care critical needs area.

The Advisory Group on Emerging Technologies consisted of individuals from Florida industry and universities who were selected based on their broad knowledge of cutting edge scientific research and technological developments.

The Workforce Florida/SUS targeted areas were analyzed by the Advisory Group to determine those areas in which Florida had an advantage or critical mass. From this analysis, Areas for Strategic Emphasis were developed.

- Mechanical Science and Technology Programs
- Natural Science and Technology Programs
- Medical Science and Technology Programs
- Computer Science and Information Technology Programs
- Design and Construction
- Electronic Media and Simulation

See the appendix for the specific degree programs under the Emerging Technologies areas.

High Wage/High Demand programs were ones in which there were at least 25 graduates and 15 in-state job placements per year and the median salary of bachelor degree graduates was at least \$32,000. This approach was expanded for graduate and professional degree programs – graduates had to earn an average of \$50,000.

See the appendix for the specific degree programs under the Emerging Technologies areas.

In addition to degree production in the above identified areas, the SUS Strategic Plan lays out expectations for building world class research capacity.

In the most recent national data available, Florida ranked 45th in total academic R&D expenditures per capita and 44th in federal academic R&D per capita.

To reach the national average by 2012-13 would require an annual growth rate, in constant dollars, of 7.87% in total academic research expenditures and 9.38% in federally-financed research expenditure.

The BOG recognized that this annual growth rate would need to come through an expansion of the number of research faculty. The current SUS faculty are already doing better than the US average in terms of academic research expenditures and only a bit below the US average for Federally-financed academic research expenditures. SUS faculty are also above national averages in terms of doctoral degree production per 1000 faculty.

FIU is below US average and SUS average in per capita academic research expenditures and below US average, but above SUS average, in Federally-financed academic research expenditures. FIU is above the national average in doctoral degree production, but below the SUS average. FIU is well below both the SUS and the national averages in patents per 1000 faculty. Until recently FIU has not emphasized patenting intellectual property resulting from faculty research.

	US Average	SUS Average	FIU Average
Academic Research Expenditures per Full-time Faculty	\$71,759	\$85,090	\$65,459
Federally-Financed Academic Research Expenditures per Full-time Faculty	\$43,105	\$40,491	\$42,732
Doctorates Produced per 1000 Full-time Faculty	89	120	98
Patents per 1000 Full-time Faculty	6.2	10.9	0

Appendix 1: Degrees Granted by Level for Groupings in Y-Axis, I.B. 1-5

<i>Degree Level</i>	<i>Program Groupings</i>		<i>Number of Grads in 2001-02 (Approx.)</i>
<i>I.B.1</i>			
<i>Critical Needs in Education</i>			
Bachelor	131001	Special Ed	286
Bachelor	131005	Ed. Of the Emotionally Handicapped	46
Bachelor	131006	Ed of the Mentally Handicapped	39
Bachelor	131009	Ed. Of the Blind & Visually Handicapped	5
Bachelor	131011	Ed. Of the Specific Learning Disabled	108
Bachelor	131203	Jr. High/Middle School Ed	17
Bachelor	131205	Secondary Teacher Ed	50
Bachelor	131306	Foreign Languages Teacher Ed.	11
Bachelor	131311	Mathematics Teacher Ed.	75
Bachelor	131316	Science Teacher Ed.	42
Bachelor	131320	Trade & Industrial Teacher Ed. (Vocational)	18
Bachelor	131395	Secondary Science/Math Teaching	5
Bachelor Total			702
Master	131001	Special Ed	251
Master	131005	Ed. Of the Emotionally Handicapped	3
Master	131006	Ed of the Mentally Handicapped	3
Master	131009	Ed. Of the Blind & Visually Handicapped	10
Master	131011	Ed. Of the Specific Learning Disabled	57
Master	131205	Secondary Teacher Ed	11
Master	131306	Foreign Languages Teacher Ed.	51
Master	131311	Mathematics Teacher Ed.	97
Master	131315	Reading Teacher Ed.	105
Master	131316	Science Teacher Ed.	110
Master	131320	Trade & Industrial Teacher Ed. (Vocational)	5
Master	421701	School Psychology	30
Master Total			733
Specialist	131001	Special Ed	1
Specialist	131306	Foreign Languages Teacher Ed.	1
Specialist	131311	Mathematics Teacher Ed.	21
Specialist	131316	Science Teacher Ed.	22
Specialist	421701	School Psychology	32
Specialist Total			77
Doctoral	131001	Special Ed	10
Doctoral	131306	Foreign Languages Teacher Ed.	2
Doctoral	131311	Mathematics Teacher Ed.	1
Doctoral	131315	Reading Teacher Ed.	1
Doctoral	131316	Science Teacher Ed.	3
Doctoral	421701	School Psychology	7
Doctoral Total			24
<i>I.B.2</i>			
<i>Critical Needs in Health Care</i>			
Bachelor	301101	Gerontology	25
Bachelor	510701	Health Services Administration	315
Bachelor	510706	Health Information Management	66
Bachelor	510907	Radiologic (Med) Tech	14
Bachelor	510908	Respiratory Therapy	49
Bachelor	511005	Medical Technology	48
Bachelor	511601	Nursing (R.N. Training)	1,164
Bachelor	512306	Occupational Therapy	133
Bachelor	512795	Health Science	316
Bachelor Total			2,130
Master	301101	Gerontology	6
Master	510701	Health Services Administration	84
Master	510807	Physician Assistant	59
Master	511601	Nursing (R.N. Training)	343
Master	512306	Occupational Therapy	23
Master	512308	Physical Therapy	147
Master	512795	Health Science	91
Master Total			753
Pharmacy	512001	Pharmacy (B.PHARM.)	328
Pharmacy Total			328
Doctoral	301101	Gerontology	3
Doctoral	510701	Health Services Administration	1
Doctoral	511601	Nursing (R.N. Training)	9
Doctoral Total			13
<i>I.B.3.a.</i>			
<i>Emerging Technologies in Mechanical Science and Manufacturing</i>			
Bachelor	140101	Engineering	5
Bachelor	140201	Aerospace Engineering	37
Bachelor	140701	Chemical Engineering	172
Bachelor	141001	Electrical Engineering	449
Bachelor	141301	Engineering Science	22

<i>Degree Level</i>		<i>Program Groupings</i>	<i>Number of Grads in 2001-02 (Approx.)</i>
Bachelor	141701	Industrial/Manufacturing Engineering	82
Bachelor	141801	Materials Engineering	30
Bachelor	141901	Mechanical Engineering	317
Bachelor	142701	Industrial & Systems Engineering.	107
Bachelor	150303	Electronic Engineering Technician	47
Bachelor	150899	Mechanical Engineering Related Technician	14
Bachelor	151101	Engineering Technology	25
Bachelor	270101	Mathematics	117
Bachelor	270301	Applied Math/Math Sciences	3
Bachelor	270501	Statistics	27
Bachelor Total			1,454
Master	140101	Engineering	86
Master	140201	Aerospace Engineering	19
Master	140701	Chemical Engineering	19
Master	141001	Electrical Engineering	251
Master	141005	Optical Science and Engineering	13
Master	141101	Engineering Mechanics	8
Master	141701	Industrial/Manufacturing Engineering	54
Master	141801	Materials Engineering	42
Master	141901	Mechanical Engineering	73
Master	142301	Nuclear Engineering	11
Master	142701	Industrial & Systems Engineering.	79
Master	143001	Engineering Management	38
Master	270101	Mathematics	46
Master	270301	Applied Math/Math Sciences	21
Master	270501	Statistics	22
Master	400595	Industrial Chemistry	8
Master Total			790
Nuclear Engineering	142301	Nuclear Engineering	1
Nuclear Engineering Total			1
Doctoral	140201	Aerospace Engineering	4
Doctoral	140701	Chemical Engineering	21
Doctoral	141001	Electrical Engineering	40
Doctoral	141005	Optical Science and Engineering	5
Doctoral	141101	Engineering Mechanics	2
Doctoral	141701	Industrial/Manufacturing Engineering	17
Doctoral	141801	Materials Engineering	26
Doctoral	141901	Mechanical Engineering	21
Doctoral	142301	Nuclear Engineering	2
Doctoral	142701	Industrial & Systems Engineering.	1
Doctoral	270101	Mathematics	7
Doctoral	270501	Statistics	9
Doctoral Total			155
<i>I.B. 3.b. Emerging Technologies in Natural Science and Technology</i>			
Bachelor	020401	Plant Sciences	12
Bachelor	030102	Environmental Science	163
Bachelor	030103	Environmental Studies (New Program)	
Bachelor	140301	Agricultural Engineering	43
Bachelor	141401	Environmental Health Engineering.	40
Bachelor	142301	Nuclear Engineering	5
Bachelor	142401	Coastal & Ocean Engineering	14
Bachelor	150504	Environmental and Urban Systems	-
Bachelor	260101	Biology	815
Bachelor	260202	Biochemistry	16
Bachelor	260301	Botany	5
Bachelor	260501	Microbiology/Bacteriology	302
Bachelor	260603	Ecology	-
Bachelor	260607	Marine/Aquatic Biology	24
Bachelor	260701	Zoology	86
Bachelor	260702	Entomology	23
Bachelor	300101	Interdisciplinary Biological & Physical Sciences	91
Bachelor	400101	Radiation Physics	3
Bachelor	400401	Atmospheric Science & Meteorology	17
Bachelor	400501	Chemistry	183
Bachelor	400508	Chemical Sciences	7
Bachelor	400601	Geology	42
Bachelor	400801	Physics	56
Bachelor Total			1,947
Master	030102	Environmental Science	34
Master	140301	Agricultural Engineering	8
Master	141401	Environmental Health Engineering.	51
Master	142401	Coastal & Ocean Engineering	21
Master	260101	Biology	64
Master	260301	Botany	10

<i>Degree Level</i>	<i>Program Groupings</i>		<i>Number of Grads in 2001-02 (Approx.)</i>
Master	260305	Plant Pathology	8
Master	260495	Plant Molecular & Cellular Biology	4
Master	260501	Microbiology/Bacteriology	14
Master	260603	Interdisciplinary Ecology	12
Master	260701	Zoology	12
Master	260702	Entomology	13
Master	400401	Atmospheric Science & Meteorology	4
Master	400501	Chemistry	38
Master	400601	Geology	32
Master	400702	Oceanography/Marine Science	10
Master	400801	Physics	35
Master Total			370
Doctoral	140301	Agricultural Engineering	2
Doctoral	141401	Environmental Health Engineering.	9
Doctoral	142401	Coastal & Ocean Engineering	6
Doctoral	260101	Biology	12
Doctoral	260202	Biochemistry	2
Doctoral	260301	Botany	1
Doctoral	260305	Plant Pathology	3
Doctoral	260495	Plant Molecular & Cellular Biology	5
Doctoral	260501	Microbiology/Bacteriology	3
Doctoral	260701	Zoology	3
Doctoral	260702	Entomology	11
Doctoral	400401	Atmospheric Science & Meteorology	2
Doctoral	400501	Chemistry	44
Doctoral	400601	Geology	8
Doctoral	400702	Oceanography/Marine Science	13
Doctoral	400801	Physics	30
Doctoral	400896	Molecular Biophysics	7
Doctoral Total			161
<i>I.B.3.c. Emerging Technologies in Medical Science and Health Care</i>			
Bachelor	140501	Biomedical Engineering (New Program)	-
Bachelor Total			-
Master	140501	Biomedical Engineering	17
Master	510501	Dental Sciences	6
Master	511395	Medical Sciences	20
Master	512201	Public Health	240
Master	512210	Community Health	1
Master	512501	Veterinary Medical Sciences	6
Master Total			290
Dentistry	510401	Dentistry	71
Dentistry Total			71
M.D.	511201	Medicine (M.D.)	211
M.D. Total			211
Veterinary	512401	Veterinary Medicine (D.V.M.)	82
Veterinary Total			82
Doctoral	140501	Biomedical Engineering	1
Doctoral	260608	Neuroscience	5
Doctoral	511395	Medical Sciences	26
Doctoral	512001	Pharmacy (B.PHARM.)	14
Doctoral	512201	Public Health	13
Doctoral	512501	Veterinary Medical Sciences	8
Doctoral Total			67
<i>I.B.3.d. Emerging Technologies in Computer Science and Information Technology</i>			
Bachelor	110101	Computer & Information Science	889
Bachelor	110401	Information Sciences & Systems	18
Bachelor	110405	Information Studies	211
Bachelor	111095	Information Technology	16
Bachelor	140901	Computer Engineering	300
Bachelor	151202	Information Systems Technology (New)	
Bachelor	521201	Management Information Systems/Business Data Process	928
Bachelor Total			2,362
Master	110101	Computer & Information Science	171
Master	140901	Computer Engineering	149
Master	250101	Library/Information Studies	304
Master	521201	Management Information Systems/Business Data Process	10
Master Total			634
Specialist	250101	Library/Information Studies	7
Specialist Total			7
Doctoral	110101	Computer & Information Science	8
Doctoral	140901	Computer Engineering	14
Doctoral	250101	Library/Information Studies	7
Doctoral Total			29

<i>Degree Level</i>	<i>Program Groupings</i>		<i>Number of Grads in 2001-02 (Approx.)</i>
<i>I.B.3.e. Emerging Technologies in Design and Construction</i>			
Bachelor	040301	Urban & Regional Planning (New)	6
Bachelor	140801	Civil Engineering	297
Bachelor	150201	Civil Engineering Technology	6
Bachelor Total			309
Master	040301	Urban & Regional Planning	44
Master	140801	Civil Engineering	124
Master	150504	Environmental & Urban Systems	1
Master Total			169
Doctoral	140801	Civil Engineering	20
Doctoral Total			20
<i>I.B.3.f. Emerging Technologies in Electronic Media and Simulation</i>			
Bachelor	090702	Multimedia Studies (Digital Communications) (New Program)	-
Bachelor	500706	Digital Media	3
Bachelor Total			3
Master	300601	Modeling and Simulation	3
Master Total			3
<i>I.B.4. Other High-Wage Programs</i>			
Bachelor	040201	Architecture	155
Bachelor	131202	Elementary Teacher Ed	2,076
Bachelor	131204	Pre-Elementary/Early Childhood Teacher Education	215
Bachelor	131305	English Teacher Ed.	102
Bachelor	131312	Music Teacher Ed.	89
Bachelor	131314	Physical Ed. Teaching & Coaching	298
Bachelor	131317	Social Science Teacher Ed.	108
Bachelor	151001	Construction/Building Technician	188
Bachelor	440401	Public Administration	150
Bachelor	520301	Accounting	1,259
Bachelor	520805	Insurance & Risk Management (New)	30
Bachelor	521101	International Business Management (New)	296
Bachelor Total			4,966
Master	130901	Social Foundations of Ed	103
Master	151001	Construction/Building Technician	41
Master	220104	Legal Specialization	69
Master	520201	Business Administration and Management	1,317
Master Total			1,530
Specialist	130301	Curriculum & Instruction	37
Specialist	130401	Ed. Admin/Leadership	62
Specialist Total			99
Doctoral	130101	Education	45
Doctoral	130301	Curriculum & Instruction	64
Doctoral	130401	Ed. Admin/Leadership	53
Doctoral	510202	Audiology	185
Doctoral Total			347
<i>I.B.5. Educated Citizenry/Workforce</i>			
Bachelor Total			24,205
Master/Specialist/Advanced Master Total			6,167
First Professional Total			578
Doctoral Total			519
Total			52,306

DATA SOURCES: Florida Education and Training Information Program 2001-02 Follow-Up; SUS Degree Inventory

This page intentionally left blank.

**BOG/BOT Performance Accountability Report
Graduation Rates**

**Enrollment Services
June 2006**

BOG GRADUATION TARGETS FOR FIU

(APPROVED BY FIU'S BOARD OF TRUSTEES JUNE 29,2005)

Measure One: Graduation Rates								
Four-Year for FTIC	Performance Index	Peer Average	US Average (1997-2001)	1998-2002 Cohort	1999-2003 Cohort	2000-2004 Cohort	2003-2007 Target	2009-2013 Target
	18%	16%	34%	19%	21%	19%	20%	25%
Six-Year for FTIC	Performance Index	Peer Average	US average (1997-2003)	1996-2002 Cohort	1997-2003 Cohort	1998-2004 Cohort	2001-2007 Target	2007-2013 Target
	45%	40%	56%	44%	47%	47%	48%	55%
AA-Transfer Two-Year	Performance Index	Peer Average	US Average	2000-2002 Cohort	2001-2003 Cohort	2002-2004 Cohort	2005-2007 Target	2011-2013 Target
	33%			39%	36%	34%	35%	40%
AA-Transfer Four-Year	Performance Index	Peer Average	US Average	1998-2002 Cohort	1999-2003 Cohort	2000-2004 Cohort	2003-2007 Target	2009-2013 Target
	72%			70%	73%	78%	78%	82%
Measure Four: Minority Baccalaureate Production								
<u>Baccalaureate Degrees</u>	Performance Index	Peer Average	US Average	2001-2002	2002-2003	2003-2004	2006-2007 Target	2012-2013 Target
Total Under-Represented Minority	66%			69%	67%	67%	67%	70%
Black, Non-Hispanic	14%			13%	13%	13%	13%	15%
Hispanic	52%			55%	54%	53%	54%	55%

GradXPress FTIC 2003: Four-Year Analysis Report

Cohort Size: 1503

Cohort: FTIC 2003

1503

May 2006

Four Year Graduation Target of 20% or 301 graduated by the end of summer '07

Report	Graduated	Not Enrolled	Still Enrolled	Off Track					On Track	Fast Track	Total
				Grades <2.25	CLAST*	Und	Credits <90	Total off**			
Nov. 2005	0	455	1048	118	439	206	316	505	284	259	1503
Feb. 2006	7	478	1018	109	42	164	335	489	165	364	1503
May 2006	18	465	1020	85	36	135	289	533	44	443	1503
Change (Feb-May)	11	-13	2	-24	-6	-29	-46	-44	-121	79	0

Progress to target:

Graduated	18	1.2%
On track	44	2.9%
Fast track	443	29.5%
Total	505	33.6%

Opportunities

Off track grades (2.0-2.24)	43	2.9%
Off track CLAST	36	2.4%
Off track credits (82-89)	33	2.2%
Total	112	7.5%

* The dramatic change in CLAST passage is due to the activation of the auto exemption process in PantherSoft.

** The total off-track is not the sum of the 4 variables due to overlapping among the areas.

GradXPress FTIC 2001: Six-Year Analysis Report

Cohort size: 1297

Cohort: FTIC 2001

1297

May 2006

Six Year Graduation Target of 48% or 623 graduated by end of Summer 07

Report	Graduated	Not Enrolled	Still Enrolled	Off Track					On Track	Fast Track	Total
				Grades (<2.25)	CLAST*	Undec (<90)	Credits	Total off**			
Nov. 2005	314	526	457	42	211	24	18	84	52	321	1297
Feb. 2006	407	543	347	45	17	14	37	102	37	208	1297
May 2006	458	527	312	41	17	10	27	87	23	204	1297
Change (Feb-May)	51	-16	-35	-4	0	-4	-10	-15	-14	-4	0

Progress to target:

graduated	458	35.3%
on track	23	1.8%
fast track	204***	15.7%
Total	685	52.8%

Opportunities:

Not enrolled, but in Grad process	10	.8%
Off track grades (2.0-2.24)	21	2.6%
Off track CLAST	17	1.3%
Off Credits (83-89)	7	.5%
Total	55	4.2%

*The dramatic change in CLAST passage is due to the activation of the auto exemption process in PantherSoft.

** The total off-track is not the sum of the 4 variables due to overlapping among the areas

*** Of the 204 on fast track, 29 have applied for graduation for Spring or Summer 06

GradXPress AA 2003: Four-Year Analysis Report

Cohort Size: 427

Cohort: AA 2003

427

May 2006

Four Year Graduation Target of 78% or 334 graduated by end of Summer 07

Report	Graduated	Not Enrolled	Still Enrolled	Off Track				On Track	Fast Track (>108)	Total
				Grades (<2.25)	Undec	Credits (<102)	Total off*			
Feb. 2006	192	84	151	23	0	3	26	6	119	427
May 2006	225	76	126	20	0	4	24	8	94	427
Change	33	-8	-25	-3	0	1	-2	2	25	

The total off-track is not the sum of the 4 variables due to overlapping among the areas.

Progress to target:

graduated	225	52.7%
on track	8	1.9%
fast track	94*	22%
Total	327	76.6%

Opportunities:

Not enrolled, but in Grad process	6	1.4%
Off track grades (2.0-2.24)	9	2.1%
Off track credits (90-102)	0	
Total	15	3.5%

*26 applied for graduation for Spring or Summer Terms

2006 Summer Action Plan

FTIC 2001 Cohort:

Phone calls and emails to the following subgroups

1. Have not passed one or more CLAST tests (17)
2. Have not decided a major and are still classified as undecided (10)
3. Have not filed for acceptance into their Major and are still listed as Lower Division (49)
4. Have 120 credits or more, but did not file for graduation (25)
5. Filled for graduation but been denied (10)
6. Are listed as special or certificate students with more than 90 credits (9)
7. Those who stopped out and expressed interest in returning (36)

Subtotal: 156

FTIC 2003 Cohort:

Emails to the following subgroups

1. Are still listed as Undecided (136)
2. Have not completed the CLAST (36)
3. Those with GPA below 2.25 (85)
4. Those with too few completed credits (289)

Subtotal: 546

AA 2003 cohort:

Phone calls and emails to the following subgroups

1. Have not applied for graduation but have completed 120 credits or more (16)
2. Applied for graduation and were denied (4)
3. Are off-track due to grades (20)
4. Have less than 90 credits completed (4)
5. Those who expressed an interest in returning (3)

Subtotal: 47

Total: 749